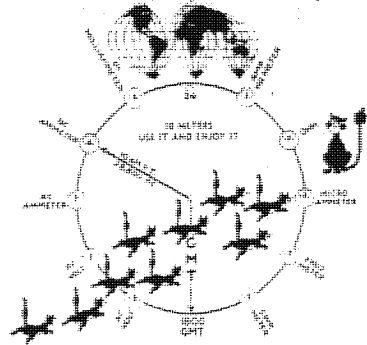


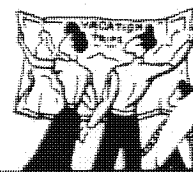
TEN-TEN INTERNATIONAL NET, INC.



# 10-10 INTERNATIONAL *News*

# SUMMER

## 1983



VOL. 21 NO. 3

## 105 COUNTRIES!



**BERNIE  
N9CDO**

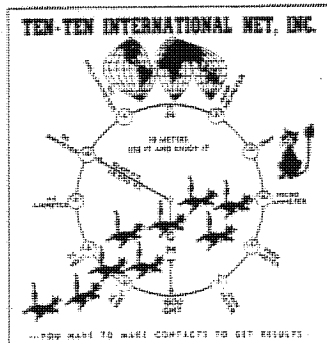
Official Publication Of The Ten-Ten International Net, Inc.

Monitoring 28,800 KHz—Daily Except Sunday

COVER STORY ON PAGE 10

# 10-10 INTERNATIONAL NET OFFICIALS

President	Carl Winter	W6OAW
Vice-President	Jim Cass	AA6K
Secretary	George Joy	WB6SYJ
Treasurer	Gerry Gross	WA6POZ
Directors:	Howard Bowman	W6QIR
	George Elliott	W6ENC
	Bob Hartley	W6WPY
	Morrie Goldman	W6EHM
Regional Managers:	Earle White	W1NC
	Larry Berger	WA2SUH
	Jim Duppins	WA3RBQ
	Clint Paine	K4EKX
	Grace Dunlap	K5MRU
	Dick Rauscher	W6ANK
	Willie Madison	WB7VZI
	John Hugentober	N8FU
	Berniece Tielemann	N9CDO
	Kevin Schleicher	WD8BXU
	Carl Schoen	W4NJS
	Art Hart	VK2BXN
	Mac McKenzie	ZL3RK
	Reg Pearson	VE3RG



## AWARDS:

Bars [100-900]	Willie Madison	WB7VZI
Bars and plaques [1000 and up]	Bill Risher	WB6OMH
Countries	Alan Sherman	K1AS
Worked All States	Susan Brackeen	K1CAD
Chapter Coordinator	Connie Hauck	K6EXO
Chmn., Rules Comm.	Harry Syring	WB1FTQ
Editor, Net Guide	Bob Wille	KB5PJ
Editor, 10-10 News	Jim Michaels	W6PGM
Int'l Net Manager	Sherm Sherman	K6PTF
Legal Counsel	Karl Kopetzky	K9AQJ
Printer	Bert Ayers	W6CL
Records Manager	Lee Pasewalk	WB6MGM
Roster Manager	Jo Moise	K6AYU
Supply Manager	Carl Winter	W6OAW

The 10-10 International News is published four times annually by the 10-10 International Net, Inc. Each paid-up member receives a copy. This is an independent publication. Permission to reprint is granted, providing suitable credit is shown.

Quarterly chapter activity reports should be sent to the Chapter Coordinator, Connie Hauck, K6EXQ, 794 W. 23d St., Upland, CA 91786 Telephone (714) 985-4836.

News items and photos may be sent to Jim Michaels, 3102 Lomina Ave., Long Beach, CA 90808. Telephone (213) 425-5577.

The next issue of the 10-10 International News is the Fall issue, scheduled to be published in October 1983.

## FALL ISSUE DEADLINE DATE

15 SEPTEMBER 1983

## 10-10 INTERNATIONAL NET CONTROL STATIONS

Monday	Dick	W6ANK	28.800 MHz
Monday (Alt)	John	WA6IYA	(28.775) "
Tuesday	Al	W6RNX	28.800 "
Wednesday	Jack	WA6YJU	28.800 "
Thursday	Sherm	K6PTF	28.800 "
Friday	Connie	K6EXQ	28.800 "
Saturday	Bud	W4WHM	28.800 MHz

- Nets start at 1800Z -

## 10-10 NET CHECK-IN SUMMARY

Weekly summary of total stations checking into the 10-10 Net for the week beginning:

Feb 28	376	Apr 4	128	May 2	175
Mar 7	367	Apr 11	93	May 9	93
Mar 14	299	Apr 18	184	May 16	105
Mar 21	362	Apr 25	136	May 23	91
Mar 28	145				

## From the desk of W6PGM

This publication welcomes the submission of short articles, news reports, announcements, and so on. Bear in mind that publication dates are approximately a week after the first day of January, April, July and October. Copy deadline dates are generally the 15th of the month preceding publication. ★ ★

Any manuscripts should be typed, and camera-ready, and should be mailed flat, if at all possible. Copy may be single-spaced. Use 8 1/2" x 11" white paper, and leave 1/2" margins on both sides. ★ ★

Photographs in black-and-white are preferred, since they reproduce more clearly than color. Include complete identification of subject matter, with call signs, complete names, 10-10 numbers, chapter identification, and any other desirable information.

## ATTENTION

If your address has a U.S. Zip Code, send your renewal or order to the Manager serving the area with the same number as in your own call sign. Details on page 31.

WHEN I WAS IN COLLEGE, somewhat more than a year or two ago, I sometimes got into a jam because I let something go too long, and had to stay up half the night writing a term paper, or doing some studying I should have done days earlier. That is somewhat akin to the position in which I find myself as I start to do my stint for this issue of the 10-10 News. Ordinarily I have at least part of what I expect to write finished and put aside when we get down to the last two weeks before deadline. Not this time.

Some weeks ago, I had explained to Editor Jim Michaels that the KYL and I hadn't been able to take a vacation for several years, and that we were going to make up for it this year. That's what we did, and between a two-week cruise, a visit to the KYL's sister, in Florida, and the time spent recovering from jet lag, I have managed to work myself into a position of being up against Jim's deadline. However, he's not quite as inflexible as a college professor.

Having gone this far without mentioning ham radio, maybe I can also get a word in edgewise about another hobby activity in which we have not engaged recently. In all of our past trips, which have covered a good part of western Europe, most of North America, and some parts of the Pacific, the KYL and I have been dedicated shutter-clickers, and we have the mountains of slides to prove it. This time we came independently to the same curious decision - neither of us wanted to take a camera! As we sailed out of Los Angeles harbor, we both experienced the same sense of relief - here we were, at the rail with hundreds of others, and we didn't have to worry about someone's head getting in the way.

AFTER THE WINTER QSO PARTY, there was a lot of the usual griping going on about some of the rules. Every time we have such an event, the same complaints arise. Maybe they come from the same people. They seem to be directed at any kind of a rule designed to place some of the responsibility for submitting a decent and complete log and other information on the individual operator. The two complaints which I heard the most were (1) the requirement for a dupe sheet if you submitted 200 or more contacts on your contest log, and (2) the requirement for a cover sheet.

Over the years I have talked personally with some of the members who were responsible for heading up chapter groups that had accepted the great task of checking and tabulating the QSO Party results. They all have told me the same story: if the contest logs were submitted in good, legible shape and in compliance with the rules, their jobs were immeasurably easier.

A good part of the problem lies in the fact that, while everyone seems to want to participate, few are ready to volunteer to do the necessary work. As I have observed on these pages before, one cannot compare 10-10 QSO parties to the contests held by ARRL or by various ham radio magazines. All the work done in reviewing 10-10 entries is volunteer; there are no paid clerks whose task it is to spend the necessary time to review the logs and do what is needed to determine points scored. The people who do the reviewing and point tabulating are members just like the rest of us. If each entrant who submits a long log (200 or more contacts) refuses to back it up with some kind of dupe sheet, it just means that each such log must be examined for duplicate contacts by someone on the committee doing the scoring. More than 120 such logs were submitted during the last QSO Party, and two operators had more than 900 contacts.

There are always a few who do not understand that a dupe sheet is not just an extra copy of the contest log. A dupe sheet is just a single sheet of paper arranged in some fashion so as to allow you to make certain you have not included any duplicate contacts. The Spring, 1982 issue of the 10-10 News devoted an entire page to a sample

dupe sheet for a 10-10 contest, but it didn't seem to change things any.

If you make a lot of contacts, there are just two ways of satisfying the dupe sheet requirement. One is to submit a computer-prepared log, so devising it that it automatically eliminates duplicate contacts. If you do this, say so on your cover sheet. The other way is to make up a simple dupe sheet that you can use as you go along or as you prepare your log for submission. Here's how you do it:

1. Get an ordinary sheet of  $8\frac{1}{2}$ " x 11" typing paper, a ruler, and a pen or pencil.
2. Along the top of the paper, starting  $\frac{1}{2}$ " from the left, make a series of marks  $\frac{3}{4}$ " apart. You'll wind up with 11 of them, and the last will be  $\frac{1}{2}$ " from the right edge of the sheet.
3. Turn the paper end-for-end and repeat the procedure.
4. Draw a line connecting the first line at the top with the first line at the bottom. Do the same for each succeeding pair of lines.
5. Turn the paper so the 11" side is at the top. Make your first mark  $\frac{1}{2}$ " from the edge, but separate the rest of the marks by 1". You'll have 11 again, with the last one  $\frac{1}{2}$ " from the other edge.
6. Again, turn the paper end-for-end and repeat.
7. As before, draw the connecting lines.

You now have a sheet on which there are 100 little boxes,  $\frac{3}{4}$ " wide by 1" high. The ends of the lines may be raggedy, but that won't matter. Now, start numbering the boxes with the one in the upper left corner. Number it "00", using small numbers in one of the top corners, and put a little box around it. The rest of the same line is numbered "01, 02, 03 . . . 09." The second line is numbered "10, 11, . . . 19" and the third line "20, 21, 22, . . . 29." When you get down to the last box, it will have the number "99." As you can see from the sample of one line of mine below, it does not have to be any work of art. It is strictly utilitarian.

In use, each box stands for the last two digits of a 10-10 number. Let's suppose that during a 10-10 contest, Gene Clark, W6DQH, is off on another "cruisepe-dition." His number is 2855, and you are lucky enough to work him. In the "55" box, write the tiny number "28." That will mean you have worked No. 2855 and can't work him again. And, in case you are curious, I have worked Gene twice when he was on a cruise, once down in the Caribbean and again in the South Pacific. However, no contest was involved.

50	51	52	53	54	28	55	56	57	58	59

Up above I mentioned logs prepared with the aid of computers. A number of issues back I mentioned that I would list information about members who were doing so, but the whole thing turned out to be an exercise in futility. Perhaps a dozen or so wrote me, but I couldn't find any way I could categorize them. Uses were widely varied, as was equipment. Most frustrating were those few who wrote to say they had, or were getting, certain kinds of computers and wanted programs for specific purposes. Unfortunately, they just didn't match up. Sorry, folks.



ALONG WITH MOST OTHER HAMS, I COLLECT a lot of radio magazines, but I don't often get a chance to prowling around through them and read the things I should brush up on. I was reminded of this just a couple of hours ago, when I turned on the receiver and heard a level of noise on 10 that was unfamiliar. It brought home with a rush the fact that we are in for a slump in 10 meter conditions which will last a while.

As a matter of sheer coincidence, I reached over and prowled through a stack of old issues of the News. The one I picked up had the title, "Quarterly Bulletin No. 2 July 1975."

There were some differences apparent immediately. That 1975 issue consisted of three sheets of paper, printed on both sides, folded and stapled. It was sent First Class Mail - and the postage rate was less than it now costs to send it Bulk Rate. 10-10 Number 10869 had just been issued, and we are now up above 37,000. The Treasurer's report showed that we had a cash balance of less than \$3,000.00. I have no idea what Treasurer WA6POZ will show in his latest report, but it cost 10-10 nearly half that much just to get the current Roster ready to distribute.

All of that just goes along naturally with growth. What didn't go with it was an article, the title of which was, "Cycle 20 Nears the Bottom Prospects for Ten During the Low-Activity Years." It was written by Ed. Tilton, W1HDQ. That one was a 10-10 Bulletin exclusive by Ed, who holds No. 8481. It makes reference to a much more extensive article which appeared in QST for June, 1975. Both are worth reading again, since they apply just as much today as they did when they were written. Ed Tilton, incidentally, was VHF Editor of QST as far back as 1939, and is still listed as a Contributing Editor.

IN THE LAST ISSUE, I made reference to the fact that we expected to have the new edition of the Roster around May 1. We didn't miss it by much, but Roster Manager Jo Moise, K6AYU, had enough back-orders on hand to cause her quite a headache. I also said that I didn't know whether it would be necessary to raise the price. I still don't, so order while they are still at the present level. It costs 85¢ just to mail each one, plus all the production costs that have gone into it, so don't be surprised.

One of the things that has pleased everyone who has seen it is the quality of the copy from which the printing was done. In the past we have been bothered by missing portions of letters, banks of letters that were askew, and other similar problems. All of this arose at the computer hard-copy level, and there was nothing the shop that did the actual printing could do to rectify the matter. Some work with the computer facility, and the use of a different kind of printer to produce the copy from the computer tape has resulted in a superior product. We think you will be delighted with it.

WHILE I THINK OF IT, I want to mention an item that emphasizes what I said earlier about 10-10 contests, and complying with the rules about reporting. That same issue of the Bulletin carried the results for the February, 1975 QSO Party. All of the results go on about 1 2/3 typed pages. There were 329 logs received, and 24 of them had 200 or more contacts. All of the log checking was handled by Grace Dunlap, K5MRU. At that time, Grace was also Manager for both the 4th and 5th call areas. She is still manager for the 5th call area.

BILL RISHER, who handles awards from the 1000 Bar up, says that many of you are being lax about paid-up membership verification when you send in award applications. All you need is a Xerox or similar copy of your current membership card or News mailing label. Don't be surprised when you get yours back without action being taken if you don't observe this requirement. 10-10 awards are for paid-up 10-10 members.

AS HAS BEEN COMMENTED ON THESE PAGES in the past, one of the more difficult sides of 10-10, or any other volunteer organization, for that matter, is getting people to say they are willing to take on jobs. It's especially true when they know that the jobs are likely to involve deadlines. Just last issue it was reported that Harry Syring, WBLFTQ, asked to step down from his demanding task as DX Manager, and that Carl Schoen, W4NJS, would succeed him.

There were also a couple of other gaps to be filled. One was that previously held by Jim Cass, AA6K, who has been in charge of the committee that arranges 10-10 contests for two or three years. When Jim was elected Vice-president of 10-10, he needed someone to take over the other assignment, which is very important, but not as demanding with respect to time. Guess who responded? Yep, Harry Syring, WBLFTQ. Jim has already turned over the materials to Harry, and it's now Harry's baby.

ONE OF THE THINGS OBVIOUS ON THE AIR is that there is a sort of premium on "new" 10-10 numbers. When someone with a newly issued number checks in on a net, it's not uncommon for net members to line up so as to work a new number. It's also apparent that in chapter nets as well as on the daily International Net, every effort is made to get contacts for those wishing to qualify.

All this has made 10-10 a large organization, which has brought some problems of its own. Do yourself a favor, and, at the same time, help 10-10 with its problem. Stick in a finger to mark this page, and turn this copy of the News so you can see the very last page - the outside back cover. On it is your mailing label. Sandwiched in between your 10-10 number and call sign on the top line is the date of your membership expiration. If you're close to that date, renew today! Remember, you can't qualify for any 10-10 award unless you're a paid-up member.

SOME CHAPTERS HAVE ADOPTED A POLICY whereby the NCS regularly asks members to report their 10-10 membership expiration dates, and reminds them when renewals are needed. Chapters that have local dues as well sometimes couple the two, making it a one-shot procedure for their members.

I GENERALLY HAVE NO IDEA whether anything I write for these pages gets through to anyone or not. Once in a while, someone comments on something to me, but not many bother to write and agree or disagree or suggest what he would like to hear about or tell me what he has done. I wish you would. Just in case you feel the urge to do so, my name is Howard Bowman, W6QIR, and I live at 5872 W. 77th Street, Los Angeles CA 90045. It will cost you 20¢, and maybe you won't get your 20¢ worth out of it, but, on the other hand, maybe you'll get something off your chest and put it on my back, which, right now, is sore because I tried to lift something the wrong way. My back will heal, and in a few days I won't even notice it. Your idea or gripe or whatever will keep niggling at you and even spoil your winsome disposition unless you pass it along to someone else. Do it.

*Howard*

# Directors

George Elliott  
W6ENC #1774



## "TEN METERS TO HAVE AND TO HOLD"

The ten meter band is on the down slope of the present Sun Spot Cycle. The days of tuning the ten meter band and hearing DX stations is rapidly passing. It may not be possible to call a CQ and have several stations worldwide answer the call, and have the operator give you a "5x9" report. The days of working the world with a few watts on ten meters is passing for this cycle.

Long skip is rapidly passing and we will have to be content with short skip or back scatter. Members of the Ten Ten Net will be able to renew contacts with friends in the short skip area that have been missed since the last short skip period. Unfortunately, the short skip openings may be short in duration. Ten meters will then become more of a local 'Rag Chew' net and we will be able to discuss our problems with the local amateurs.

The changes in the skip pattern will tend to give some members of Ten Ten and other amateurs the mistaken idea that ten meters is no longer of any value and they will move to some other band forgetting that ten meters is still in existence. This idea must not occur. There will always be a net on 28.8 MHz at 1800 UTC every day except Sunday. The Net will be serving the same purpose as always, keeping the ten meter band in use. The Net Control will be different but the frequency will be the same. Do not think the band is dead because no one is heard when tuning the band. Many times other hams are doing the same thing and no contact will be made. Tune the ten meter band and then give a call, you may find that several stations have been waiting for someone to call. The ten meter band must be kept in use or some organization will pressure the FCC to delete part or all of the band from amateur use and permit other services to use all or a portion of the 28.0 MHz to 29.7 MHz band.

The purpose of the Ten Ten International Net is to keep the ten meter band in use during the time the band is open to "far away places" or when we must be content with local contacts and with the various chapters. It is hoped that all amateurs who have ten ten numbers will remain paid up members and remain active on the ten meter band. Ten meters will again be the best band when the next "Sun Spot" cycle is favorable.

"30"

GEE

*George Elliott*

## Words from the President

Carl Winter  
W6OAW #10947



The requirement that members show proof of paid-up 10-10 membership to participate in QSO parties for awards and to earn bar awards and plaques is increasing our renewal requests for membership according to reports from some Area Managers. We have had some questions asked about QSO party scoring and awards. The members of the Chapter that have volunteered to tally the logs for a particular event are the judges and their decision is final. They follow the same rules as announced in the News Bulletin. Any question about the scoring or the awards should be addressed to the Chapter tallying the event. We are still very much in need of a volunteer for the position of Supply Manager. Let's hear from someone in the South Los Angeles, San Pedro, Long Beach or South Bay areas wanting to help make 10-10 International a more interesting and progressive Net.

73

*Carl*



FROM THE TREASURER  
GERY GROSS - WA6POZ 21274  
SUMMARY OF FOURTH QUARTER 1982 - 83

### INCOME - EXPENSE

	QUARTER		YEAR-TO-DATE	
	1982	1981	1982	1981
INCOME	11,954	13,787	41,135	40,147
EXPENSE				
BULLETIN, ROSTERS, ETC	5,202	7,405	23,261	26,725
REGIONAL MANAGERS	784	1,098	3,036	2,998
OFFICERS & DIRECTORS	87	104	315	509
OTHER MANAGERS & SERVICES	811	778	2,652	4,722
TOTAL EXPENSE	6,884	9,385	29,264	34,954
EXCESS (LOSS)	5,070	4,402	11,871	5,193



# ANNOUNCING

## THE 10-10 CLOSED CONTEST

The contest will be on Saturday, October 1, 1983 beginning at 0001z and ending at 2359z. Try to contact as many 10-10 members as possible. Contacts are to be made from 28.000 to 28.600 and from 28.800 to 29.000 MHz.

Scoring: Look at pages 2 and 31 of your 10-10 NEWS. On page 2, the first 8 calls listed under officials are worth 5 points, all other calls listed, on page 2, are worth 4 points including the Net Control stations. On page 31, you will find additional area managers for the 4th call area. Chapter Heads are 3 points; certificate managers or other chapter officials are 2 points and members at large are 1 point each. There will be no combining of points.

Logs: Your log must include call, date, time, name, qth, 10-10 number and position held if any. Mail logs with tally sheets, by November 15, 1983, to Chapter Coordinator, Connie Hauck, K6EXQ, 794 W. 23rd Street, Upland, CA 91786. Be sure to include your own call and QTH on your tally sheet or log. The tally sheet should contain your call, mailing information and claimed number of contacts and points.

Awards: Certificates to the highest scoring official and non-official in each USA, Canadian and DX call area.

This contest is meant to be short and fun.....So enjoy it!

## MEMBERSHIP ROSTERS

Comments which have come to the attention of the editor of the NEWS indicate that some confusion exists as to how a roster order is processed. The procedure is as follows:

1. Place your roster order with your Area Manager, using the order form found on page 31 of the 10-10 NEWS. Complete the order in accordance with the instructions. You will note that it is a postage paid item.
2. Do not send stamps or SASE unless you wish to receive confirmation from the Area Manager that your order was received. The Area Manager does not send or mail the roster direct. Your order is forwarded, by the Area Manager, to the Roster Manager who maintains the supply of rosters. It is then mailed, post paid, to the individual who placed the original order.

3. The orders to the Roster Manager, from the Area Managers, are placed in a timely manner such that there will be no untimely delay. This procedure does help keep the roster costs down as a result of the savings in shipping, postage and the reduced workload which would be imposed on a single individual. Don't forget, all of the tasks performed by the 10-10 officials are done voluntarily so we do try to balance the work load.

73,

Jim, W6PGM



# 10-10 AWARDS



500 BAR

INTERNATIONAL-500-OF-THE-WORLD

500 BAR

## TOP TEN

1361	K1AQE	1371	KB5VV	K5MRU	12700	1381	KC9OZ	1391	N5DJN
1362	KX5H	1372	KA4VAN	WA5JDU	12500	1382	WB1DWR	1392	K3PFV
1363	KB9WK	1373	WBØZZI	WØRWC	10900	1383	KA2DIW	1393	KA4MKB
1364	K9RTB	1374	VK3DAY	WA9LIC	9000	1384	K4DDC	1394	W6YLJ
1365	N7BPO	1375	WA2TNN	WA6FFS	7200	1385	KAØCIR	1395	N4AYJ
1366	WA3WHX	1376	WBØGKG	K4KAH	6700	1386	KA4NXT	1396	KH6DRT
1367	KS5V	1377	DL7YBM	W1KZH	6600	1387	KA7OYD	1397	N9DAJ
1368	K8GIP	1378	K4KTZ	KS6A	6500	1388	WD5JOL	1398	KB6LT
1369	WA8KOF	1379	KAØKCE	W1FPH	6300	1389	WD4RNU		
1370	WA3YJA	1380	KA4TTS	PJ2WG	6200	1390	VE2ANE		

Members attaining the 500 Bar are automatically members of the INTERNATIONAL-500-OF-THE-WORLD, Frank Orcutt, W4JO (SK), Founder, Grace Dunlap, K5MRU, President.

### 1000 BAR and PLAQUE

651	WØAGX	656	K5QKY	661	NZ4H
652	KB2SQ	657	W6LLV	662	W2EQO
653	N8BBE	658	W4DYL	663	W7ZKL
654	NØCCX	659	N7BMR	664	N6GDS
655	KJ8V	660	WD4RAF	665	K6DHC
					Correction
					650 N4FBY

### 5000 BAR & PLAQUE

18 WB1GMM

### 10-10 WORKED ALL STATES

703	KA5LTO	708	6D5OX	713	KA1FXI
704	WA1UKX	709	N4FEF	714	WA6GFV
705	KJ8V	710	WB6SKV	715	VE3MKM
706	N1ASJ	711	KB8XS	716	N4EIB
707	KC9LP	712	WD4RAF	717	W5ZF

### 10-10 COUNTRIES AWARD

#### Basic -25-

130	KC8KF	136	WA5NIC
131	N6JM	137	G3BKS
132	WØAGX	138	W8RNB
133	N7BMR	139	WO4L
134	KC9LP	140	SM5DYC
135	AF5W	141	KA1EXM

#### ENDORSEMENTS

-35-	-45-
57 W7KOI	38 N5AFV
58 LU1ABT	39 KC4OC
59 WB1BVQ	40 WD4RAF
60 WA5NIC	41 WB1BVQ
61 KC5HY	
62 SM5DYC	

-55-

22	K4KAH
23	WA2OIZ
24	KA3BTH
25	W9WYN
26	WA8JOI

-65-

14	K3DYX
15	WØRWC
16	W9HCI
-75-	
9	WØRWC
-85-	
6	K5HGL

-105-

#1 N9CDO



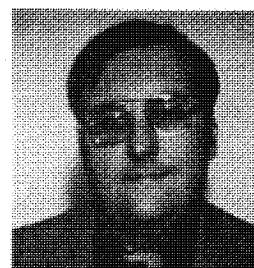
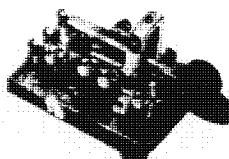
Congratulations to Berneice Tielemann, N9CDO #20025 on becoming the first 10-10 member to work and confirm 100 or more 10-10 countries. At press time, her total was 105 countries as reported by Alan Sherman, K1AS, Countries Awards Manager. [Editors Note: Over the many years, I've often wondered if anyone would ever work 100 Ten-Ten countries and now it has happened! Congratulations Bernie!!]



## 10-10 INTERNATIONAL NET FALL CW QSO PARTY

By: Harry Syring, WB1FTQ  
Chairman, Rules and Ethics

Starts: 0000Z (UTC) September 24, 1983  
Ends: 2400Z (UTC) September 25, 1983



Ten-Ten QSO Parties are open to all amateurs, but only paid-up members are eligible for awards or chapter assignment of scores. They are conducted to encourage Ten-Meter operation and interest in the Net. Non-members may use numbers collected to qualify for membership; members may use them for BAR and other awards.

### RULES

1. All contacts must take place between 28.0 and 28.8 MHz.
2. Exchanges: Callsign, name, city, state and 10-10 number.
3. Novices sign /N; Technicians sign /T.
4. A station may be counted only once.
5. Single operator stations only are acceptable.
6. CW and RTTY modes are acceptable.
7. All contacts must take place within the 48 hour contest period.
8. QRP class limit is 10 watt output.
9. Logs must be in UTC (ZuLu time).
10. Chapter assignment of scores may be only by a paid-up member, belonging to that chapter as a local member, and able to work that chapter NET via groundwave from the location of the station working the contest.
11. Illegible or improperly submitted logs will be rejected. See below for log submission requirements.
12. Failure to comply with any of these rules or their intent may result in disqualification.

### SCORING

1. Two points for each contact with a 10-10 number exchange.
2. One point for each contact without a 10-10 number exchange.
3. One additional point if contact is a novice or a technician.

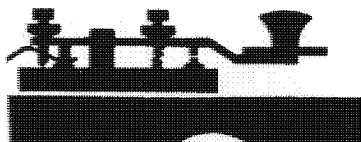
### AWARDS

First place certificates and first place QRP class certificates to all U.S. call areas. KL7, KH, all VE districts, South America, Central America, Caribbean, Europe, Africa, Asia, Australia, New Zealand and the South Pacific. Individual and chapter scores are published in the 10-10 News. If 20 or more RTTY logs are received they will be scored separately.

### LOG SUBMISSION

Logs are accepted from Ten-Ten members only and must be legible, in UTC, and complete. Each line entry must show callsign, date, time, name, QTH, and Ten-Ten number (if any) A Cover Sheet is required, showing your name, callsign, QTH, Ten-Ten number, membership expiration date and chapter assignment (if any), total contacts and total points claimed. Please indicate if QRP and list output power. If claiming more than 100 contacts, a dupe sheet is required. Logs must be postmarked no later than November 5, 1983 and mailed to:

Music City Chapter, c/o Don Perry, K4E2S  
102 Rural Avenue, Nashville, Tennessee 37209



# SILENT KEYS

491 WA8WEX Edwin Kohler, Farmington Hills, MI	12606 W1VMO Chesler L. Pattee, Sharon, MA
711 W6SW D. Casson Mast, Ontario, CA	13917 WA6YCF V. Wayne Kenaston, Redwood City, CA
741 VE3DHT Thomas Wilson, Scarborough, ON	15015 W6TFZ John Hecomovich, Belmont, CA
1660 W9CSQ Raymond Zaneck, Kenosha, WI	18247 W2QJM Francis N. Kryss, Fairport, NY
2305 W1DSO John R. Manning, Arlington, MA	18314 K7WY Gordon L. Olson, Laramie, WY
2427 W3SLW Clayton W. Greninger, Milton, PA	18927 WD8JCY William T. McMannis, Springdale, OH
2835 K8TLS H. Allen Wilkenson, Minneapolis, MN	20217 K2IXN Warren L. Spindler, Rome, NY
2910 W8LAE Howard A. Judd, Nunica, MI	20315 KC7WJ Cecil L. Willis, Sheridan, OR
3069 WB6RUL Geoffrey Wingate, Sacramento, CA	22928 WA7WHJ Dyle Linn, Noti, OR
3359 W8DSO Jack R. Wagner, Ferndale, MI	23601 KB7UW Forrest C. Blood, Lake Oswego, OR
3437 W5FZO Alton R. Bird, Donna, TX	24473 W7CNB Donald T. Elliott, Prosser, WA
6511 W8LIO Caleb Gustafson, Robinsdale, MN	27842 W7JSP Emmanuel J. Irving, Sun City, AZ
8003 WA7RGZ Karl E. Haley, Globe, AZ	29659 WA1SDP Frank R. Gethro, Gorham, ME
9067 HP1GD George Dawson, Panama City, Panama	29671 N1BFM Willard E. Morton, Jr. Troy, NH
9172 N4LL Francis W. Greenough, Spartanburg, SC	32503 N1BSC George B. Rivers, Southington, CT
10488 WBØFQD Richard M. Richardson, Littleton, CO	



W6PGM de NØCKW

Hi Jim,

It is my sad duty to report the passing of RICH RICHARDSON - WBØFQD 10-10 #10488. He became a Silent Key on June 7th '83 as a result of a heart attack.

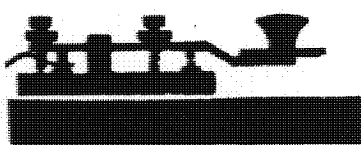
Rich was the ram-rod behind the formation of the Colorado 10-10 Chapter and Centennial Net back in 1975 and he served as Chapter Head for five years.

He will be greatly missed by all.

73

*Chuck*  
Chuck

#8/05



# 10-10 CW QSO PARTY



RESULTS  
1983 SPRING CW QSO PARTY  
SCORED BY:  
MUSIC CITY U.S.A. CHAPTER  
NASHVILLE, TENNESSEE

Final results are in and it looks like a very successful contest. 145 logs were received, 9 of which had expired or had no 10X number, which we unfortunately had to disqualify. We had logs from several novices. DX results were not too encouraging but with no propagation into Europe, this was not too suprising. We would like to take this opportunity to thank all contestants. The logs submitted were all in fine shape and very little corrections were necessary.  
We from Music City, U.S.A. Chapter, were honored to be the Judges for this contest and look foward to doing this again.

73's and thanks to all,

Don Perry, Sec.  
K4EZX - 10X 24789  
Music City, U.S.A. Chapter

## CHAPTERS:

*****		
1. TROTTERS & PACERS	12-	558/1066
2. FT. MCHEERY	17-	521/ 974
3. POSSUM TROT	12-	504/ 950
4. MOTHER OF THE WEST	6-	476/ 853
5. BAY AREA	6-	424/ 799
6. C. A. T. T.	4-	286/ 526
7. OCEAN STATE	3-	221/ 407
8. OUTLAW	2-	193/ 333
9. SKY BLUE WATERS	5-	168/ 325
10. S. N. E. NUTMEG	4-	134/ 251
11. CENTRAL FLA. CYPRESS	3-	120/ 215
12. SUN COAST	2-	98/ 191
13. KEYSTONE	1-	102/ 180
14. CITY OF ROSES	1-	86/ 164
15. LINBERG	1-	87/ 162
16. CITY OF LIGHTS	4-	83/ 154
17. FLOUR CITY	2-	71/ 140
18. BLUE BONNET	1-	73/ 139
19. MO - KAN	2-	66/ 129
20. TWIN TIERS	1-	55/ 106
21. DALLAS COWBOYS	1-	41/ 82
22. CRATER LAKE	1-	41/ 77
23. HOUSTON SHOT	1-	37/ 62
24. CITY OF MELBOURNE	1-	31/ 62
25. MUSIC CITY U. S. A.	3-	33/ 60
26. ELECTRIC CITY	2-	31/ 56
27. TARCHANG	1-	28/ 47
28. NOR'EASTER	1-	20/ 38
29. CHEHAW COUNCIL	1-	17/ 33
30. MINUTE MEN	1-	8/ 15

## \* TOP FIVE

\*\*\*\*\*

W4RTY	-	214/370
W6LLV	-	162/296
VE4AIY	-	161/281
WA5JDU	-	155/264
WB6FZN/4	-	131/244

\*\*\*\*\*

## DX

\*\*\*\*\*

ZL3RK	-	51/91
VK3YU	-	31/62
JR3TRF	-	28/47
JG1RYQ	-	13/26

\*\*\*\*\*

## VE

\*\*\*\*\*

VE4AIY	-	161/281
VE7SR	-	98/186
VE2DPO	-	50/ 96
VE6AVJ	-	34/ 64

\*\*\*\*\*

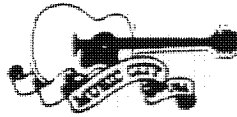
## Q.R.P.

\*\*\*\*\*

W6YMH	-	94/174
WA2TSR	-	45/ 79
KS0N	-	37/ 74
N5CNH	-	38/ 63
KA4LIH	-	21/ 38
N8LA	-	21/ 38
WA4VWG	-	17/ 33
JG1RYQ	-	13/ 26

\*\*\*\*\*





#### 1st. CALL AREA

\*\*\*\*\*

KA1EOL - 83/147  
K1QFD - 69/137  
KB1C - 69/123  
AD1I - 44/ 87  
WB1FTQ - 36/ 69  
WB1AOD - 28/ 53  
KA1BFC - 28/ 44  
N1BIZ - 26/ 51  
W1TAM - 20/ 38  
W1IIP - 8/ 15

\*\*\*\*\*

#### 5th CALL AREA

\*\*\*\*\*

WA5JDU - 155/264  
AD5F - 75/144  
W5QF - 72/143  
WA5RNV - 73/139  
W5SRQ - 44/ 88  
KB5PJ - 41/ 82  
N5CNH - 38/ 69  
W5KMN - 37/ 62  
W5SUV - 30/ 61  
WA4BQV/5 - 28/ 54

\*\*\*\*\*

#### 2nd. CALL AREA

\*\*\*\*\*

WB2FBG - 87/162  
WB2KEL - 73/139  
W2VPL - 70/138  
WB2SSH - 62/123  
W2KRK - 62/117  
AE2L - 59/111  
WB2STV - 57/108  
W2VHX - 55/106  
W2FXA - 54/106  
WA2TSR - 45/ 79  
KB2PJ - 36/ 69  
KA2PBJ - 31/ 56  
KB2SQ - 26/ 52  
K2LFG - 26/ 45  
KA2DYB - 21/ 40  
WA2EKK - 17/ 34  
WA2KWC - 8/ 17  
KA2ICP - 10/ 16  
K2HLC - 6/ 12

\*\*\*\*\*

#### 7th CALL AREA

\*\*\*\*\*

KB7KV - 121/218  
K07B - 86/164  
KN7B - 48/ 88  
W6ELR - 41/ 79  
K7TDX - 41/ 77  
AB7X - 37/ 69  
KU7H - 30/ 53

\*\*\*\*\*

#### 3rd. CALL AREA

\*\*\*\*\*

KJ3G - 77/152  
W3HAO - 78/148  
W3DCN - 76/147  
WA3GLQ - 72/132  
N3BGY - 77/128  
WB3FSB - 43/ 83  
KC3FX - 37/ 72  
KA3EWV - 28/ 52  
N3CEW - 23/ 41  
WA3RBQ - 21/ 41  
KA3HFC - 20/ 37  
W3JZP - 19/ 37  
WB3HAH - 17/ 34  
KB3UM - 15/ 28  
W3PHV - 13/ 23  
W3FQN - 8/ 16  
WA3ISV - 10/ 14  
N3AMX - 7/ 14  
KC3CM - 5/ 10  
W3QYL - 1/ 2

\*\*\*\*\*

#### 9th CALL AREA

\*\*\*\*\*

KA9IXM - 66/119  
K9DHC - 59/111  
WD9JIA - 26/ 52  
KC9LP - 25/ 49  
KC9OZ - 27/ 47  
KA9KDZ - 25/ 46  
W9HOT - 22/ 40  
KC9NJ - 6/ 12

\*\*\*\*\*

#### 4th. CALL AREA

\*\*\*\*\*

WB6FZN/4 - 131/244  
W4JHE - 130/230  
KU4W - 123/228  
WD4AHZ - 72/136  
NS4J - 75/127  
N4ERM - 45/ 89  
K4YTH - 44/ 84  
K4HIU - 39/ 77  
KA4STM - 35/ 70  
KA4HNV - 27/ 54  
K4WP - 26/ 51  
N4EWG - 27/ 48  
W4NWP - 25/ 44  
KE4CA - 22/ 44  
KA4LIH - 21/ 38  
KA4TLC - 17/ 34  
W4EJR - 17/ 34  
WA4VWG - 17/ 33  
N4GYX - 12/ 24  
KZ4A - 6/ 13  
KA4OFG - 6/ 11  
KA4SYG - 3/ 6  
K4EVS - 3/ 6  
N4BPQ - 3/ 6

\*\*\*\*\*

#### 6th CALL AREA

\*\*\*\*\*

W6LLV - 162/296  
N6HC - 142/272  
W6LII - 114/209  
KS6A - 102/180  
W6YMH - 94/174  
W6TKF - 79/151  
KA6AOS - 60/119  
W6FWK - 55/107  
KD6PP - 51/ 99  
KJ6Z - 19/ 38  
KD5IX/6 - 14/ 30

\*\*\*\*\*

#### 8th CALL AREA

\*\*\*\*\*

W8JSM - 71/136  
W8PJY - 45/ 87  
KY8S - 40/ 73  
N8LA - 21/ 38  
N8DOA - 12/ 24

\*\*\*\*\*

#### Ø CALL AREA

\*\*\*\*\*

WØRTY - 214/370  
K1ØW - 107/188  
KØODF - 76/250  
WØJES - 57/110  
WØIZV - 50/ 96  
WØSEN - 43/ 81  
NØDBG - 42/ 79  
KØØN - 37/ 74  
WØEI - 36/ 71  
KDØAV - 32/ 63  
KAØJDS - 32/ 60  
KØØI - 30/ 57  
WØØHQ - 29/ 55  
NØDPI - 24/ 47

\*\*\*\*\*

#### EXPIRED OR NO 10X NO.

\*\*\*\*\*

W4GRO - 86/163  
K4MN - 69/136  
WB4KDC - 29/ 57  
KD4XC - 25/ 47  
N4FHM - 16/ 32  
KC4FC - 14/ 28  
KE4HW - 13/ 24  
WB4WZH - 7/ 16  
N5OUZ - 7/ 14

\*\*\*\*\*



# DX

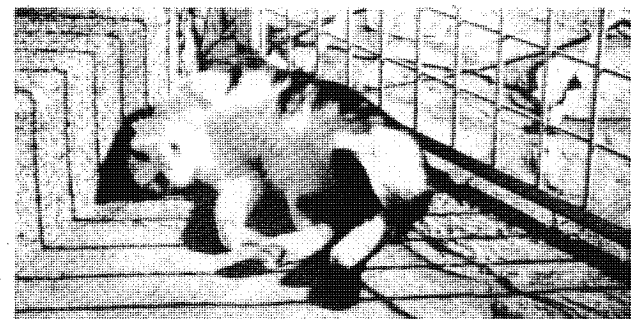
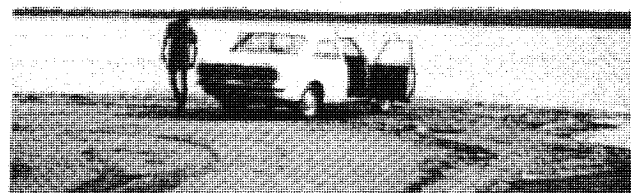
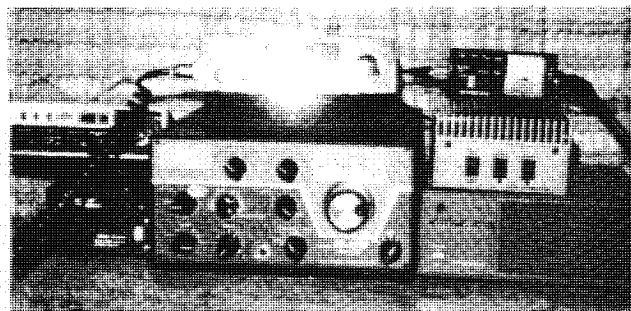


EA4CFZ

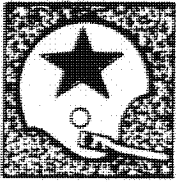
This young member of 10-10 is Roberto Diaz Gonzalez, EA4CFZ #36199. Bob lives in Madrid, Spain and is hoping for better propagation soon so that he might get more bars and numbers.



VK2VDY



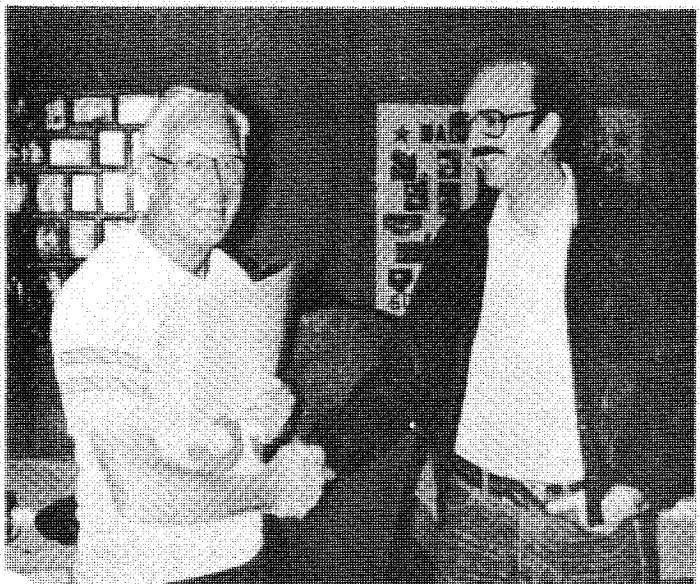
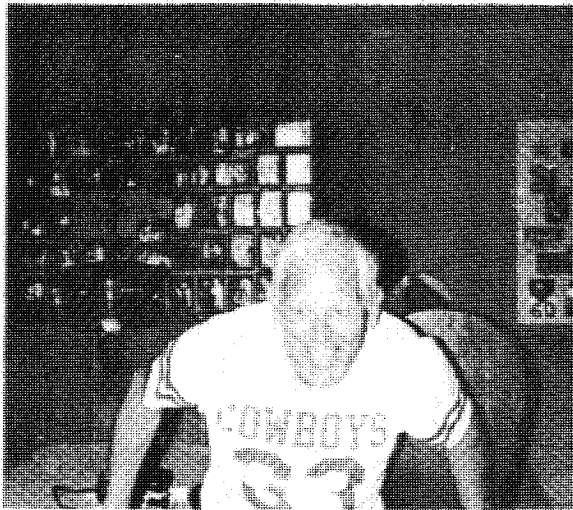
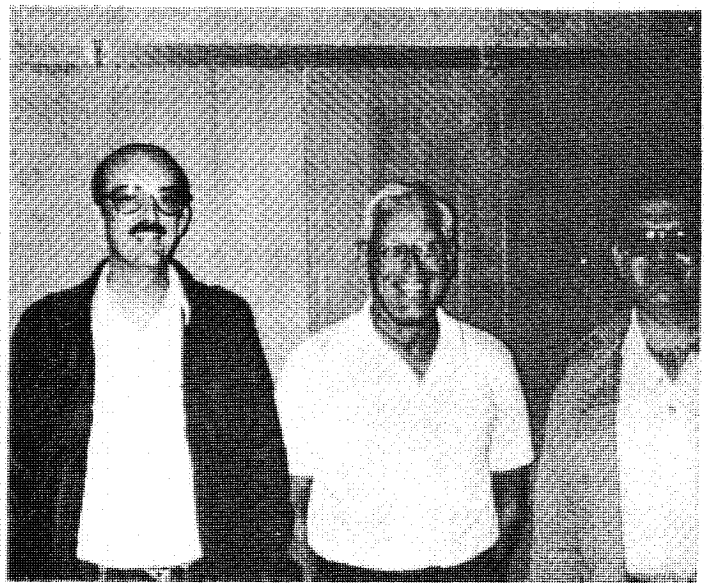
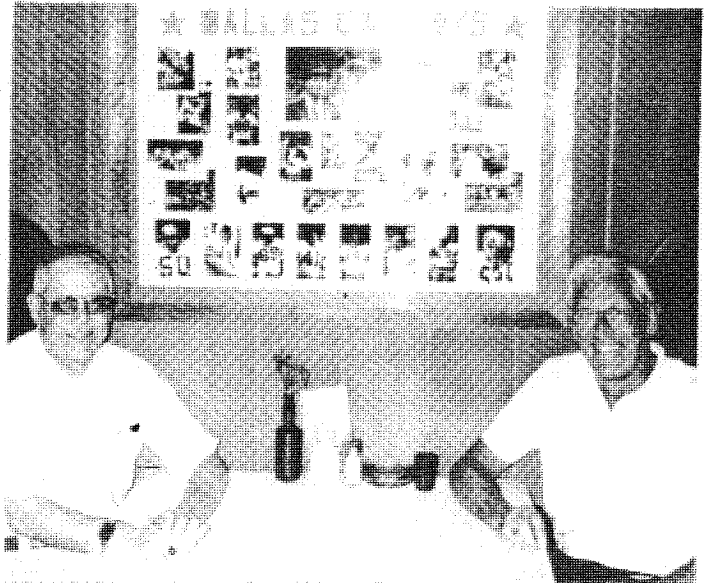
From Maroubra Beach, a suburb of Sydney, NSW, Australia, this is Charlie Ferguson, VK2VDY #34228. On the right hand side, the top photo shows his very neat and efficient station. Center photo is Charlie's favorite 10 meter mobile operating location at the beach near his home and the lower photo shows his playful pet known as "Shack Cat".



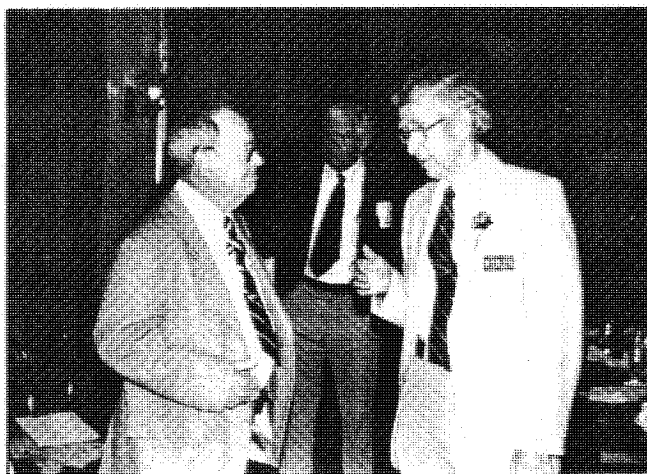
Dallas Cowboys Chapter  
and  
Cowtown Chapter  
of 10-10 Int'l.

Some pix of the Cowboy/Cowtown gang  
at Slaphappys' in Arlington Texas on  
March 6 honoring Richard Goodall of  
Manchester, England.

Top Right-Bob Wille, KB5PJ, Cowboy CM  
and Richard Goodall, G2AVQ. Center  
Right-Jim Carter, KB5ZA, Cowtown CM;  
Goodall and Clif Swinney, WB5THD,  
Cowtown CH. Center Left-G2AVQ trying  
on the new T-shirt. Bottom Right-  
Goodall receiving honorary Branding  
Iron certificate. Bottom Left-Ben  
Woodall, W5MBO and Tom Little, W5GVP  
talking it over.



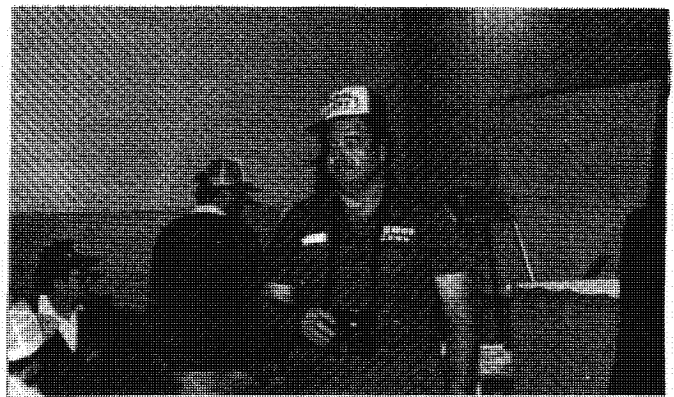
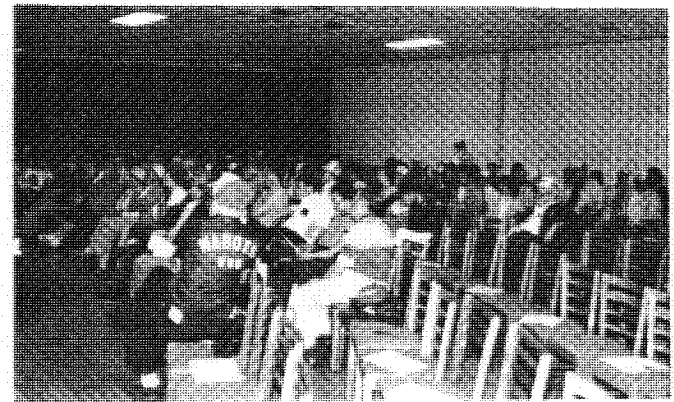
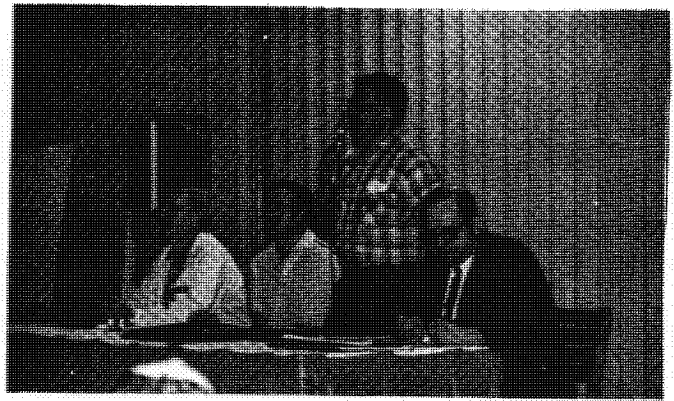




On 14 May 1983 the Minute Man Chapter held a luncheon meeting at Bobby Hackett's Restaurant in Pembroke, MA. Thirty seven members attended and there was plenty of chin wagging. Top Left: (L-R) Newsy, W1FFT #571 CH; Ed, W1UKD #25416 and Cliff, W1RZO #6340. Top Right: (L-R) Jim, W1QMT #33925 and Earle, W1NC #329, First District Manager. Lower Left: (L-R) Norm, KA1GOJ #32548 and Phil, W1JZU #25477. Lower Right: (L-R) Sid, K1YWW #1005; Tony, WA1ENO #17874, luncheon chairman and Sonny, K1SVP#7588.



Breakwater Chapter. Above Left Front Row: (L-R) KS8P, KA8JVZ and KC8KF. Back Row: (L-R) KJ8C, N8DCQ, W8HIN, KC8KE, WB8NSI, KA8CMR, KA8BLW and KR8N. Above Right (L-R) KC8KF and N8DCQ.

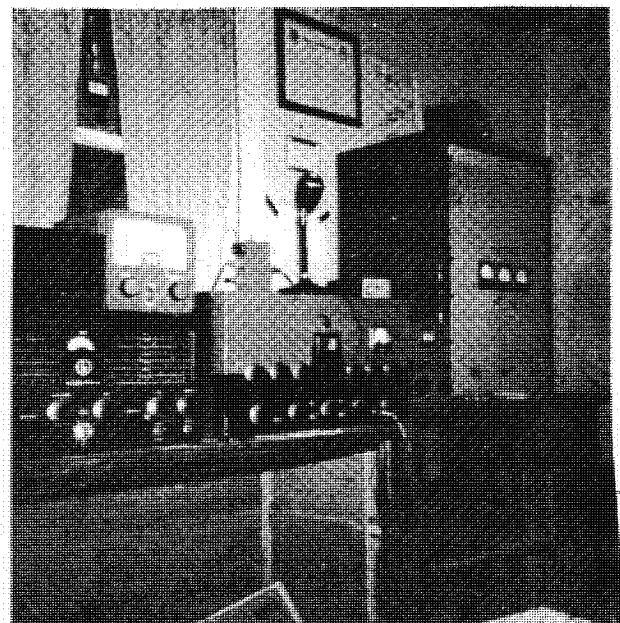


A great time was had by all of those who attended the Dayton Hamvention.  
See Connie's Letter in this issue for more details.





You have all heard about the activities of the Houston Shot Chapter. According to all reports, this fellow is the chief motivator behind their success. He is Don Zielinski, KØPVI/5 #9902 shown here at his operating position. Don is officially the Contest Manager for the chapter.



According to Jay Farnsworth, W7WLV #17 of Fallon, NV this is what every modern ham shack should have! You will note the 10-10 membership certificate on the right side of the wall.



Part of the POSSOM TROT CHAPTER CW contest crew. Front Row: WB6FZN, KB4IH, KU4W, N4EWG/T and KC4FC. Middle Row: (L-R) WB4WZH, KE4CA, KZ4A and KD4XC. Back Row: (L-R) KE4HW, KA4LIH/T, W4GRO and N5CUZ.



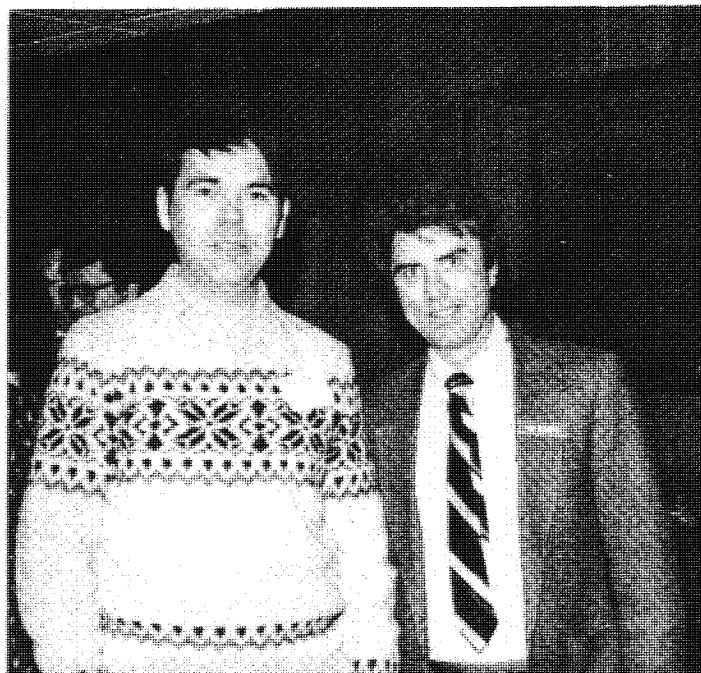
A lot of you have worked this very active old-timer. He is Ray Murtberg, WØEI #10472 of New Hope, MN. Ray is a member of the Sky Blue Waters Chapter and has been a ham since 1930.

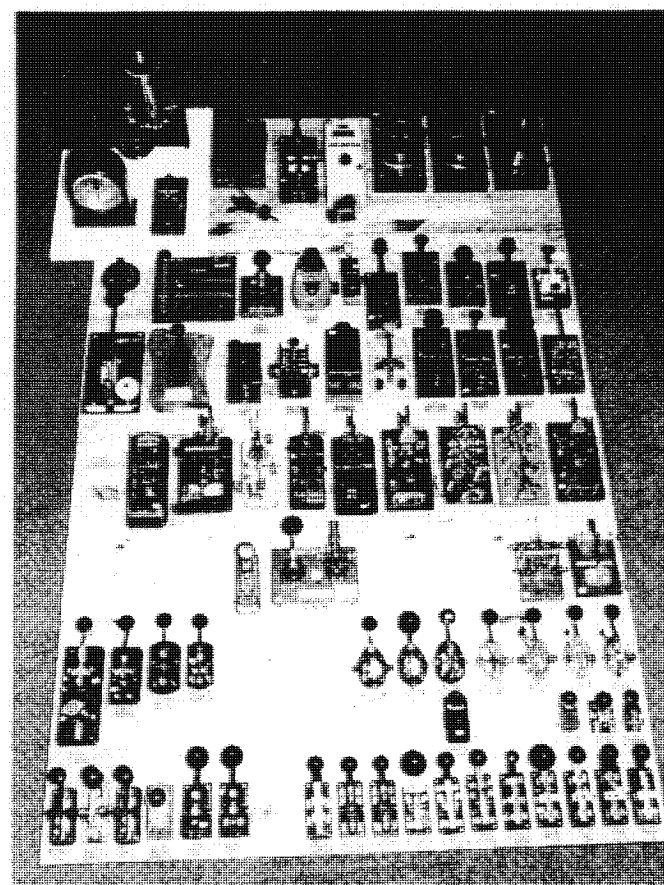
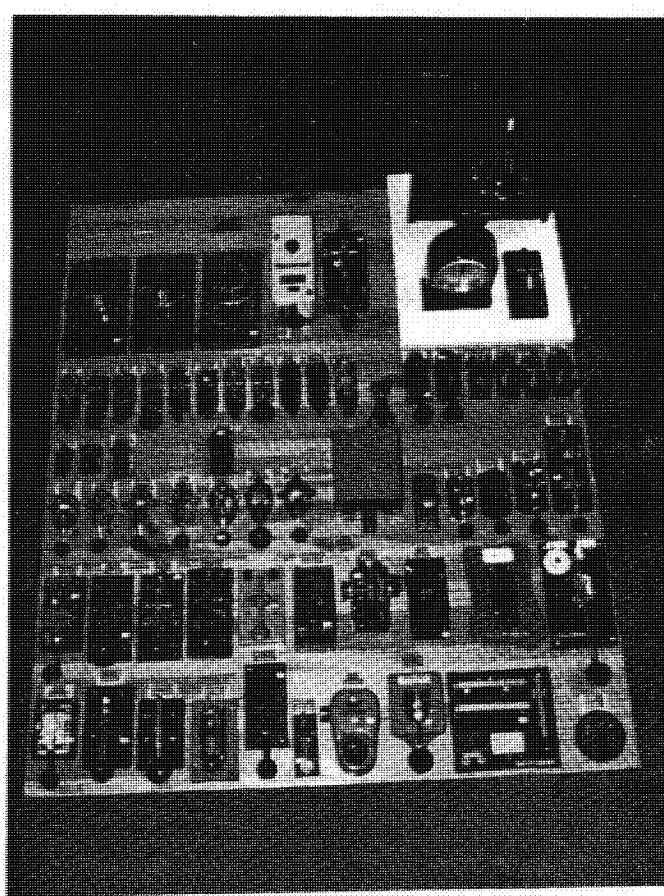


# SKY BLUE WATERS CHAPTER



Top Right: (L-R) Alta, YL-NØBSM; Ken, NØBSM; Tom, KCØPV; Pat, YL-KCØPV. Top Left: (L-R) Duane, NØBEI; Howard, WØOZC, ARRL Dakota Division and Len, NØACD, CH. Lower Left: (L-R) Marty, NAØD and Ron, KBØPA. Lower Right: (Seated) John, KCØGP; (Standing L-R) Frank, WØRBB; Ron, NAØJ and Duane, WBØRCC. These photos were taken at the annual banquet of the chapter which was held in St. Paul, MN on 12 March.





These photographs show the collection of telegraph keys which belong Julius, ZS6AF #36121. These keys are on display at the museum in his ham radio store in Johannesburg, S.A. The purpose is to enable young hams to see what kind of gear was used by old timers, and the old timers to reminisce on the good old days. All items are donated or loaned by hams and any branch of the S.A. Radio League may borrow, on request, any amount of items for display or exhibitions. Contact Julius, ZS6AF by writing to P.O. Box 8628, Johannesburg 2000, So. Africa.



Warren Hager, K2UFM #9695 shown at the operators position of his station in Hillsdale, NJ. His favorite sport is chasing DX and an article was recently seen in a New York publication describing his ham radio activities.

## ANNOUNCING

To all members, especially Chapter Heads, the new Net Guide Editor is Bob Wille, KB5PJ, 804 Colleyville Ter., Colleyville, TX 76034. All information about your Chapter Net schedule (Freq., time, day and mode) should be sent to Bob so that he will be able to list the latest accurate information. See new Net Guide in this issue.

Our new Roster Manager is Jo Moise, K6AYU, who lives in Artesia, CA. Her OM is Lee, K6AYZ. These two are very active and dedicated 10-10 members and we are happy that Jo is now the Roster Manager. As most of you know, Jo was formerly the Secretary of 10-10 International.

Our new Lucky 13 Certificate Manager is Mark Morris, KØWZX #79, 1419 Lane 20 1/2, Pueblo, CO 81006. Mark very generously volunteered to take this responsibility after Rich Richardson became a recent Silent Key.

Don Zielinski, KØPVI/5 recently made a generous offer to 10-10 members. He realized that there are many members who may not have an appropriate log, dupe or summary sheet which would be proper for 10-10 QSO parties. He designed a sheet for each purpose and stated that a sample copy may be obtained by furnishing an SASE to the following:

Stu Lamkin, WB5IGG  
7401 Heilig Street  
Houston, TX 77074

By the way, There is a photo of Don, KØPVI/5 in this issue of the NEWS. Thanks a million to Don and Stu!

From Grace Dunlap, K5MRU #218, President of INTERNATIONAL-500-OF-THE-WORLD, please note the following changes in the VP Certificate standings:

VP-100 #45 WB5TXP  
VP-600 #2 PJ2WG

Also, you might note that Willy, PJ2WG is now listed in the "Top Ten" as shown on the 10-10 Awards page in this issue.

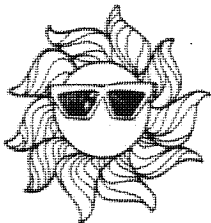


At the right, is a photo of a couple of very prominent 10-10 members. The picture was taken some time ago at a 10-10 function in New England. On the left is Dick Gregorio, K1RAW #1, of Framingham, MA and on the right is Alan Sherman, K1AS of Danielson, CT.

Dick is active on the band, both fixed and mobile, and many of us have had the opportunity to contact him. Alan is the Countries Award Manager and is doing an outstanding job!







# CONNIE'S LETTER-



CONNIE HAUCK, K6EXQ  
No. 19681  
CHAPTER COORDINATOR

My thanks to the Mad Swingers Society for an HC number. It is much appreciated.

Thanks to John, N8FU for a nice report on the Dayton Convention. The 10-10 forum was very interesting and informative. John/W8PJY was moderator with speakers being John/W8FU, Max/K89IU and Alden/WD4AQK. There were 101 in attendance with 5 being non 10-10. More than 30 chapters were represented.

The Penn Dutch has a new CM Ed Wertz/WB3HJC R.D. #4, Box 264A Coatesville, Pa. 19320.

Remember a certificate guide is available from Jim Beswick/W4YHF Rt. 5, Box 778 Willijay, Ca. 30540. Cost is \$3.30 FCS Stateside and \$5 US funds for DX. An update package is available each month which lists all changes and additions for the previous 30 days. Cost is 70¢ per month Stateside and \$1. DX. If you collect certificates it is money well spent.

Some of you are not putting your call or chapter name on your report forms. Most of you I know right away but others who I do not have the pleasure of working often if ever, I have to a little research and time was not available for me this time.

I had wanted to list all of the active chapters this time but again there was no time for me to spend doing that. The Joshua Tree and Ky. Blue Grass are extinct. There will be others when things are more settled and I can check through things.

It is nice to know that so many of you are continuing your nets even though the checkins are low. It doesn't matter if you don't have a big check in, just be there and keep 10 meters active. We are happy to welcome three new chapters and our old friends on the Chattanooga Choo-Choo. Guess most of the crew is new but did recognize one call from previous charters. It is always good to see a chapter become active after being qrt for awhile.

I would like to ask your indulgence for any mistakes in this, any unanswered mail, lists not yet sent or anything else that I have been negligent in. As I write this at 0100AM my husband of nearly 39 years lies in ICU near death. In less than two weeks he has had two brain surgeries. The Dr. told me today that the central nervous is deteriorating and that the chances of recovery are not good. I wait for the phone call that I hope never comes. Thanks so much for your cards and letters and those of you that I have talked to on the phone who have included us in your prayers. I know that whatever happens that life goes on but right now I just don't see how.

I will not be starting the co-ordination net in the fall. I cannot be tied down to a net where I could not get an easy replacement, that is assuming that I get to bring Willis home. I asked for comments about continuing the net and not one reply did I get so I assume that you are not really interested in it. I have temporarily (I hope) given up the Friday. W6MDK has been kind enough to take it until things are better for me.

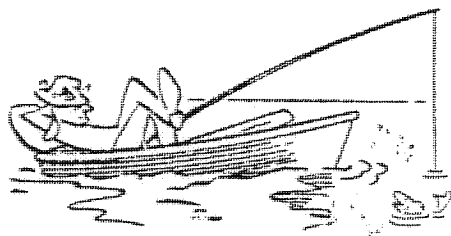
Thank you good friends for all that each of you means to me. I hope to see you next quarter with better news.

I almost forgot to thank Mickey/K85UP for his years dedication to the net guide. Mickey found it impossible to continue so Bob Willo/K85PJ 804 Colleyville Ter., Colleyville, Texas 76034. Should you have any change in net time, frequency or if you see a new chapter, please send Bob your Net information. Remember to send Jim/W4YHF your certificate information. Contact your district if you are not getting your 10-10 NEWS. Certificates should go directly to the editor/W6PGM.



# CHAPTER CHATTER

SUMMER



Castle Craig(K1WJL): Enjoyed field day. We are doing some service work. Have added four or five new members. Murphy's Law(KA1CAD): New award, QRP LINEAR to include 6C or L;15HC;15HM;10FS,FC,FP;SDX;SYL;5Blown Fuses;5 Faulty Mikes;5 Rusty Keyers,5Fried Finals;5 Shorted Coax; 1 contact from each call area and nine others. Begin after receipt of Shorted Coax or after June 4, 1983. All contacts are retroactive. Adds 10 points & is IQ.After QRPL & starting with 750 points, you will receive one watt and for each additional 250 points you will get one watt up to 10 watts. All SASE.

Staten Islander(KA2AAY): Victory Award as of 12/31/82. 10C;8L; 6HC;4FS/FC & 2 DX. Fee \$3 +2FCS. Miss Staten Island appears at the controls of a station on the certificate. We sure did enjoy the photo session with her. We have a computer net on Tues. 8 PM ET on 28.745. Trotters and Pacers(K2HLC): Propagation poor but the NJ & NY chapters are supporting each other. If you want others to check in your net, you must occasionally check in with other chapters. Keep 10 busy.

Fort McHenry(W3DCN): Many getting the computer bug and when the band is out there is much talk about programs. Looking forward to the July QSO Party. White House (WB3BMA): We mourn the death of Burt on 5/31/83. Burt was active until his death and we will miss his signal from Mt. Airy. Burt's call was W3SCS #8970.

All American City(KC4LV): Net was listed incorrectly- it is 28.825 7:30 PM Central time not Eastern. Chapter of the Carolinas(N4AYJ): Chapter has discontinued all awards program but the net will continue. Will resume awards in a few years if the demand warrants. Mason-Dixon(WD4MPG): Over 50% of C & HC of the chapter attended the festivities at Dayton. Plan to go to Dayton in '84 because it is a GREAT place to meet people that you work on 10. Space Shuttle(KC4CK): Challenger up grade is now available. New location for club activity station is the Visitors Information Center Kennedy Space Center. Treasure Coast(K4KAH): Please be more careful in printing your call when applying for certificates. Sometimes they are very hard to read. Some of the chapters are taking four to eight weeks to process applications and that is much too long.

Dallas Cowboys(KA5KAW): Some good band openings recently to the east also to VK's. Bob Wille-K85PJ- replaces K85UP-Mickey in doing the net guide. Mickey has done an outstanding job and we do appreciate it. Outlaws(N5CNH): We have become official animal feeders at the zoo at San Antonio by adopting a Roadrunner. We agree to pay the feed bill for one year. Good band openings to east coast in late afternoon and early evening. Republic of Texas(N5BFO): DX net discontinued until fall. Had CZ1RK check into the net and qualify for his number. Enjoyed having HP3JRP check in with us.

Bigfoot(WB6SRQ): We have had some bad publicity from someone who did not receive our certificate. If that person would be kind enough to let us know the details, we would be glad to take care of it. About a year ago we did have a back log but that was cleared up. We have had one complaint, mail never arrived, but that too has been taken care. Let us know if you did not receive your certificate. Golden Bear(WB6POQ): Third annual Tomatoe Worm Race will be in Sept. Listen on the band because we are all

planning some fun. River City Arc(WD6DFB): Look for some more fun from the nuts at RCA this fall. No information yet but will be passed out in plenty of time for all to participate. QRP(W6IRT): Have a code practice station on 24 hours a day on 28,888 KHZ.

Cascade(WA7DVP): We plan a "get to gether" at Lane Co. Ham Fair July 16-17 and will attempt a group photo to send W6PCM for the next issue of the NEWS. Columbia River (WA7HDZ): New CM is Knet/KA7GKW P.O. Box 73 Richalnd, Wn. 99352. Silver State(W7ABX): New certificate is Virginia & Truckee. Basic requires 10C or HC Silver State(a); SFS/SS or FS/Emerald Bay (b); 5 SS/YL(c); 5 other EB(d); 5 V&T local charters for a total of 30 different contacts. Note- SS/DX contacts may be used was wild card in categories a thru d up to a total of 5-DX wild cards only. Categories a & b maybe mixed contacts in those sections. This is a VIP for SS and is an IQ. Fee is \$2+2FCS. CM is Mike Giles/WB7SUY 1385 Alturas Ave., Reno, Nv. 89503. Contacts are after April 16, 1983 at 2030Z. Net meets at the 2030Z on Sat. & on 28.711 at 0400Z Fri.

C.A.T.T.(W8PJY): Ten-ten forum at Dayton was a great success. More than 30 chapters were in attendance with all 10 call areas represented plus some DX. The "Paper Chasers" make it a 3 day party. Our net time was incorrect, it should be 0100 GMT. Local time will change when we are on day light savings time in the summer. Great Lakes(W8HIU): 15 charters attended Dayton. Have a new Lakers award & W.A.S. certificate plus continuing the point system. SASE to WA80XS for details.

City of Lights(W9ZGP): Glad to KSMRU & WA5JDU check in with us. On July 19th we will celebrate net #347 consecutively. We find interesting skip late in the evenings. Parrot(K89IU): Had 88 Parrots at Dayton from all over the states. Had 36 original charters and 31 who changed thier # to a C. Also had 21 new charters. We presented six new upgrades with the first being Partridge requiring 1300 points. Senator Dirkson(WA9VWX): Planning to announce a new upgrade soon. Listen on the band for info.

Gateway(WØERZ): Devoted one session to biography (and autoboigraphy) of WØNFN-Carl on occassion of his 50 years being a ham. Lewis & Clark(KBØRM): All awards SASE for # only. On Clark seal Mont./N.Dakota requirement- they do not have to L & C members. Minn-Dak Sunflower(KCØFT): Informal Sunday net is discontinued. KAØFSM, KAØNDX and KCØFT are working with the Handi Hams. Mother of the West(WBØSEN): We have a CW net on Monday 28.150 at 0300Z. We will change one hour when the time changes. Pikes Peak (NØBOV): Correct our net time to be 1600Z & 0300Z. Sky Blue Waters(NØACD): Had a nice banquet with 23 couples attending. Speaker was Howard Marks/WØthe vice director of Dakota Div. of ARRL. Tue. evening C.W. net is discontinued. War Eagle(WBØRNM): We do appreciate everyone helping us get started again. Please give your number as follows- point value followed by WE # as 15W1C. For each 100 points through 1000 you will have one more point & 1200 to 1800 you will get one point for each 200. SASE for both. W.A.S. as of 3/1/83-work a WE in each state-5 countries may serve as wild cards. The old Blue & Gold seals Council Oaks numbers are good but they will no longer be issued. ALL previous WE numbers are good. Sgt. Floyd Award available for 5000 points fee \$2+2FCS.

Missed: Druid City(K4CIH): WAS certificate is \$1+2FCS DX \$2. It is an IQ and adds 10 points. N9CDO was the first WAS, a 11x14 framed color picture of coach Paul "Bear" Bryant was presented to her at Dayton. Chehaw Council(WD4IB0): Due to a heavy work load we have gotten behind with our certificates but Nancy McHugh/WD4ICH is the new CM and will soon have them all out. QTH is 3006 Winterwood Dr. Albany, Ga. 31707.

# DX DX

City of Melbourne(VK3NPS): I have not received a bulletin in 12 months and all of my mail goes unanswered. All chapter members are in exactly the same boat. Down Under (ZL1TB): Mark is the new CH, Gold Coast(VK4AS): New CM's Jack & Alma Richters/VK4VAS & VK4VAR P. O. Box 179 Wynnum QLD 4178 Australia. King Salmon(VE7DFO): Please note new address 3710 Winston Cres., Victoria, B.C. V8X 1S1. Lake Geneva(HB90P): Three of five C's had an eyeball at ITU headquarters in Geneva where chapter was established three years ago. Those attending were CH/CM HB90P, F6EAK & W4KM. Missing & missed were Heikki/OH2TW presently in Pakistan & unable to operate and Bob/KD4JI who is on 10 from his qth in San Antonio, Texas. Listen on Sat. 28.850 1500 UTC also on Sunday the same time & frequency. Dex often checks in on Sun. from NN3SI which has a 10-10 # and Lake Geneva #. Mad Swingers Society(SM5DYC): Change and corrections for awards. Basic 20 points to include 1C or HM & 2 FS/FC. Flags require 50, 100 & 200 points. Fee is \$3 for basic and \$1 for each flag. Rhone Alpes (F6CSK): There is confusion among the foreign stations about some of the words used in the 10-10 NEWS. We donot know your slang and cannot find in the dictionary. Our copies of the NEWS takes 3 to 4 months to arrive and often we do not get the information that we need for an event until it is over.

Also reporting were" Mass. Minute Man(W1FFT):, Nor' Easter(W1ZOR):, Flour City(WA2JPE):, Anthracite Breaker(WB3AVF):, Cradle of Liberty(N3CHL):, Crazy Eights(KA3AV8):, Great Smoky Mountain(WB4NDX):, Choctawhatchee Bay(WF4X):, Old Dominion(WB4UDI):, Orange Juice(W4DWN):, Palmetto(NV4I):, Devils Triangle(WA4ZPX):, Sun Coast(KA4DDY):, Textile Empire(WA4VEK):, Tidewater(WA4BGC):, Wiregrass Peanut Pickers(W4FY8):, Dallas County Lone Star(KB5VB):, Billy the Kid(KA5AQT):, Cowtown(WB5THD):, Bauxite(K5NE):, Houston Shot(WB5FII):, Mardi Gras(WB5SKQ):, Miss. Gulf Light House(N5AQJ):, Chief Seattle(W7HUL):, City of Roses(KA7FEH):, Crater Lake(K7TDX):, Golden Spike(W7ZKL):, Grand Canyon State, Thunderbirds(KA7COQ):, Breakwater(NB0CQ):, Crossroads Village(KG8S):, Land O Lincoln(W98PU):, Milwaukee Guardian(W9M2Z):, Mo-Kan(WA7HQ):, North Star(KØSE):, Alaskan Iditarod(KL7JGN):, Brazil(PY2DBU):, EATT(VE6ATT):, King Salmon(VE7DFO):, Surrey Dogwood(VE6CLC and Yukon Gold Panners(VY1BQ).

## NEW CHAPTERS

Buzzard Roost(WA4LUQ): Meets daily 28.750 at 0130Z. Basic certificate 5 contacts including 1 C. Fee \$1+2FCS. CM is Dale Marquis/WA4EZX P.O. Box 635 Fairforest, S.C. 29336.

Chattanooga Choo-Choo(K4JCD): Meets 28.830 Tues. 1930Z. Contact Paul Jenkins/W4UIQ 1 Mithcell Ln., Rossville, Ga. 30741 for information on awards.

City of Oakland Park(W04L): Meets on Thurs. 0001Z 28.743.

Texas Burners of the Midnight Oil(WB5MJK)meets Wed. 29.373 for SS8 and the time is 0830Z. Also meet Thurs. 0830Z 28.111 for C.W. FM net is pending. Midnight Marauder Award for working 8 chapter members plus one non US station between the hours of 0700Z and 0930Z. \$3 to Jay Hoffman/KA5OST c/o TBOTMO 3739 Hilltop Road Fort Worth, Texas 76109.

## Chapter Activities

Many 10-10 chapters issue certificates which may be earned by following rules established by those chapters. See "10-10 Net Guide" for days and times when chapter nets meet. Groups wishing to create local chapters may get informatin from Chapter Coordinator Connie Hauck, K6EXQ, 794 W. 23 St., Upland, CA 91786. Changes in Net schedules should be reported to Bob Wille, KB5PJ, 804 Colleyville Ter., Colleyville, TX 76034.

## SUNDAY

CHAPTER	QTH	FREQ.	L/TI	ZULU	CHAPTER	QTH	FREQ.	L/TI	ZULU
1-----					6-----				
CITY OF MUMS	CT	28745	1900ET	2300Z-SU	Q.R.P. NET	CA	28780	1400PT	2100Z-SU
MINUTEMAN	MA	28150	1930ET	2330Z-SU	WILD BURRO	CA	28698	1100PT	1800Z-SU
S. NE. NUTMEG	CT	28690	2000ET	0000Z-Mo	WILD BURRO	CA	28698	1500PT	2200Z-SU
2-----					7-----				
ELECTRIC CITY	NY	28790	1500ET	1900Z-SU	CINNABAR MOUNTAIN	ID	28830		2100Z-SU
MOHAWK VALLEY	NY	28765	2nd Su	1400Z-SU	EVERGREEN STATE	WA	28950	0900PT	1600Z-SU
STATEN ISLANDER	NY	28745	1100ET	1500Z-SU	GOLDEN SPIKE	UT	28875		2100Z-SU
TWIN TIERS	NY	28805	1300ET	1700Z-SU	WYOMING TEN TEN	WY	28670	2100MT	0200Z-Mo
3-----					8-----				
ANTHRACITE BREAKER	PA	28660	2100ET	0100Z-Mo	MID-LID	MI	28820		1900Z-SU
CRADLE OF LIBERTY	PA	28695	2000ET	0000Z-Mo	NOARS COUNTRY	OH	28855	1300ET	1700Z-SU
FORT MC HENRY	MD	28770	1200ET	1600Z-SU	SARAS BOX	MI	28840	1600ET	2000Z-SU
4-----					STARK COUNT	OH	28800	1145ET	1545Z-SU
BLUE AND GRAY	KY	28760	1330ET	1730Z-SU	9-----				
CHAP. OF CAROLINAS	NC	28730	1500ET	1900Z-SU	LAND OF LINCOLN	NE	28650	2000CT	0100Z-Mo
CHEWAW COUNCIL	GA	28755	1900ET	1900Z-SU	MILWAUKEE CHAPTER	WI	28805	2000CT	0100Z-Mo
CHOCTAW-HATCHEE BAY	FL	28692	1400ET	1800Z-SU	0-----				
KENTUCKY BLUEGRASS	KY	28655	1900ET	2300Z-SU	CLIFF DWELLERS	CO	29330	1800MT	0000Z-Mo
OLD NORTH STATE	NC	28740	1600ET	2000Z-SU	COLO. CENTENNIAL	CO	28805	1600MT	2200Z-SU
OLD NORTH STATE	NC	28140	1700ET	2100Z-SU	LEWIS AND CLARK	ND	28840		1600Z-SU
PALMETTO	SC	28770	2100ET	0100Z-Mo	MINN-DAK SUNFLOWER		28865	1900CT	0000Z-Mo
POSSUM TROTTERS	NC	28845	1330ET	1930Z-SU	MOTHER OF THE WEST	MO	28810		1900Z-SU
TIDEWATER NET	VA	28860	1600ET	2000Z-SU	PIKES PEAK	CO	28845	1000MT	1500Z-SU
TREASURE COAST	FL	28880	1400ET	1800Z-SU	SOUTH DAKOTA	SD	28700	1200CT	1700Z-SU
5-----					SKY BLUE WATERS	MN	28715	1100CT	1600Z-SU
BAUXITE	AK	28765	2030CT	0130Z-Mo	DX-----				
GOLDEN TRIANGLE	TX	28700		2000Z-SU	CHAPTER OF BORINAGE	ON	28785		1000Z-SU
LIGHTHOUSE	MS	28700	1900ET	2300Z-SU	DOGWOOD	VE	28675		0400Z-SU
PLAINSMAN	TX	28675	1330CT	1830Z-SU	LAKE GENEVA	HB9	28850	(28185)	1500Z-SU
PALO DURO	TX	28705	1000CT	1500Z-SU	MANCINIUM	G	28870		1300Z-SU
TRUTH OR CONSEQUENCES	NM	28512		1900Z-SU	CAISE VALLEY	F	28860		0800Z-SU
6-----					OTAGO 45 SOUTH	ZL	28905		2300Z-SU
BIG FOOT	CA	28710	2000PT	0300Z-Mo	RHONE ALPS	F	28770		0730Z-SU
CHANNEL ISLANDS	CA	28750	1600PT	2300Z-SU	SCARBORO BLUFF	VE	28735		1800Z-SU
CITY OF PERRIS	CA	28915	0900PT	1600Z-SU	TULIP	PA	28795		0900Z-SU
GOLDEN BEAR	CA	28805	1300PT	2000Z-SU	YUKON GOLD PANNERS	VY	28785		1900Z-SU

## MONDAY

CHAPTER	QTH	FREQ.	L/TI	ZULU	CHAPTER	QTH	FREQ.	L/TI	ZULU
1-----					5-----				
NOR'EASTERS	MA	28704	1900ET	2300Z-Mo	SOONER	OK	28820	2000CT	0100Z-Tu
2-----					6-----				
L.I.A.R.S.	NY	28110	2000ET	0000Z-Tu	BAY AREA	CA	28775	2000PT	0300Z-Tu
STATEN ISLANDER	NY	28745	2000ET	0000Z-Tu	GOLDEN BEAR	CA	28610	1930PT	0230Z-Tu
TROTTERS AND PACERS	NO	28755	1900ET	2300Z-Mo	GREAT VALLEY	CA	28830	1900PT	0200Z-Tu
3-----					SMOG	CA	28785		2100Z-Mo
BEAVER VALLEY	PA	28850	1900ET	2300Z-Mo	7-----				
COMMODORE PERRY	PA	28120	1930ET	2330Z-Mo	CHIEF SEATTLE	WA	28625	2000PT	0300Z-Tu
4-----					SILVER STATE	NV	28777	2000MT	0200Z-Tu
CHEWAW COUNCIL	GA	28565	1900ET	2300Z-Mo	THUNDERBIRD	AZ	28770	1900MT	0100Z-Tu
KENTUCKY CARDINAL	KY	28760	2000ET	0000Z-Tu	9-----				
SEVEN RIVERS	FL	28900		0000Z-Tu	CHIEF ANDERSON	IN	28785	1730ET	2230Z-Mo
SIR WALTER RALEIGH	NC	28687	2000ET	0000Z-Tu	CITY OF LIGHTS	IL	28720	2030CT	0130Z-Tu
SUNCAST	FL	28100	1900ET	2300Z-Mo	OLD FORT	IN	28695	1930ET	2330Z-Mo
WHITEHOUSE	DC	28725		0100Z-Tu	0-----				
5-----					JACKPINE	MN	28850	1900CT	0000Z-Tu
BAUXITE	AK	28765	1930CT	0030Z-Tu	PIKES PEAK	CO	28845	2000CT	0200Z-Tu
MARDI GRAS	LA	28715	1830CT	2330Z-Mo	DX-----				
					BERLIN BEARS	WG	28810		1700Z-Mo

## TUESDAY

CHAPTER	QTH	FREQ.	L/TI	ZULU	CHAPTER	QTH	FREQ.	L/TI	ZULU
1-----					5-----				
MINUTEMAN	MA	28609	1930ET	2330Z-Tu	HEART OF TEXAS	TX	28640		0100Z-We
S.NE.NUTMEG	CT	28690	1930ET	2330Z-Tu	HOUSTON SHOT	TX	28688	2000CT	0100Z-We
2-----					REPUBLIC OF TEXAS	TX	28560	1900CT	0000Z-We
LINDBERG CHAPTER	NY	28780	2000ET	0000Z-We	6-----				
3-----					FRESNO CHAPTER	CA	28845	2000PT	0300Z-We
ANTHRACITE BREAKER	PA	28660	2130ET	0130Z-We	ORANGE COUNTY	CA	28755	1900PT	0100Z-We
FORT MC HENRY	MD	28770		0000Z-We	Q.R.P. NET	CA	28780	2000PT	0300Z-We
MARYLAND-DC	MD	28770	2000ET	0000Z-We	7-----				
4-----					CASCADE	OR	28650	1930PT	0230Z-We
ALL AMERICAN CITY	AL	28625	1930ET	2330Z-Tu	CINNABAR MOUNTAIN	ID	28885	1900MT	0100Z-We
CHAPTER OF CAROLINAS	NC	28540	1800ET	2200Z-Tu	CRATER LAKE	OR	28930	2000PT	0300Z-We
CITY OF FIVE FLAGS	FL	28670	2000ET	0000Z-We	GRAND CANYON	AZ	28748	2200MT	0400Z-We
DEVILS' TRIANGLE	FL	28525	2000ET	0000Z-We	8-----				
GREAT SMOKY MOUNTAIN	TN	28700	2100ET	0200Z-We	C.A.T.T.	OH	28800	2000ET	0000Z-We
OLD DOMINION	VA	28813	2030ET	0030Z-We	GREAT LAKES CHAPTER	MI	28860		2359Z-Tu
OLD NORTH STATE	NC	28740	1930ET	2330Z-Tu	MICH WATER WONDERL	MI	28650	1900ET	2300Z-Tu
SUNCAST	FL	28795	2000ET	0000Z-We	9-----				
5-----					EGYPTIAN RADIO CLUB	IL	28720	1900CT	2300Z-Tu
BLUE BONNET	TZ	28625	1900CT	0000Z-We	DX-----				
GOLDEN TRIANGLE	TX	28828	2000CT	0100Z-We	EDMONTON AREA	VE	28520		0400Z-We
GREEN COUNTRY	OK	28600	2000CT	0100Z-We	LONDON CHAPTER	G	28805		1930Z-Tu

DELETIONS, ERRORS, CHANGES, ETC. TO-- KB 5 PJ, 804 Colleyville Ter.,  
Colleyville, Texas, 76034. 73's from Bob Willie.

WEDNESDAY							
CHAPTER	QTH	FREQ.	L/TI	ZULU	CHAPTER	QTH	FREQ. L/TI ZULU
2-----					7-----		
FLOUR CITY	NY	28725	1930ET	2330Z-We	LILAC CITY	WA	28790 2000PT 0300Z-Th
MOHAWK VALLEY	NY	28765	2000ET	0000Z-Th	8-----		
STATEN ISLANDER	NY	28150	2000ET	0000Z-Th	MICHIGAN ROBINS	MI	28800 1930ET 2330Z-We
3-----					TRI-CITY	MI	28960 2000ET 0000Z-Th
COMMODORE PERRY	PA	28835	2030ET	0030Z-Th	9-----		
DELAWARE VALLEY	DEL	28660	1930ET	2330Z-We	BLACKHAWK VALLEY	IL	28925 2100CT 0200Z-Th
FORT MCHENRY	MD	28770		0000Z-Th	MILWAUKEE CHAPTER	WI	28805 2100CT 0200Z-Th
4-----					SEN. DIRKSEN	IL	28330 1930CT 0030Z-Th
CRADLE OF CONFEDERACY		28722	2000CT	0100Z-Th	0-----		
CYPRESS	FL	28655	2000ET	0000Z-Th	GATEWAY	MO	28650 2000CT 0100Z-Th
DRUID CITY		28865		0100Z-We	LAND OF LINCOLN	NE	28805 2000CT 0100Z-Th
5-----					MO-KAN	MO/KAN	28842 2000CT 0100Z-Th
COWTOWN	TX	28710	2000CT	0100Z-Th	NORTH STAR	MN	28637 2000CT 0100Z-Th
6-----					T.R.O.T	MN	28780 2000CT 0100Z-Th
HOOT OWLS	CA	28810	2000PT	0300Z-Th	DX-----		
KINGS VALLEY	CA	28702	2000PT	0300Z-Th	KING SALMON	NE	28650 2000PT 0300Z-Th
7-----					MANCUNUM/E. LANC.	G	28860 1400Z-We
CITY OF ROSES	OR	28645	1930PT	0230Z-Th	RHONE ALPS	F	28150
THURSDAY							
CHAPTER	QTH	FREQ.	L/TI	ZULU	CHAPTER	QTH	FREQ. L/TI ZULU
1-----					5-----		
MURPHY'S LAW		28820		0000Z-Th	HOUSTON SHOT	TX	28188 2000CT 0100Z-Fr
2-----					LOVE STAR	TX	28580 2000CT 0100Z-Fr
L.I.A.R.S.	NY	28730	2000ET	0000Z-Fr	RIO GRANDE	TX	28690 2000CT 0100Z-Fr
3-----					TEN BAR X	TX	28640 2000MT 0200Z-Fr
DELAWARE VALLEY		28660	1930ET	2330Z-Th	6-----		
4-----					10-10 BUSINESS NET	CA	28800 1930PT 0230Z-Fr
CHEMAM COUNCIL	GA	28535	2200ET	0200Z-Fr	7-----		
FURNITURE CAPITAL	NC	28673	1930ET	2330Z-Th	GOLDEN SPIKE	NV	28825 1930MT 0130Z-Fr
GREAT SMOKY MOUNTAIN	TN	28700	2100ET	0100Z-Fr	NORTHERN NEVADA	NV	28711 2000PT 0300Z-Fr
MUSIC CITY	TN	28910	2000CT	0100Z-Fr	8-----		
O.J.	FL	28525	2000ET	0000Z-Fr	LAND OF LINCOLN	NE	28650 19000CT 0000Z-Fr
OLD NORTH STATE	NC	28740	1930ET	2330Z-Th	DX-----		
5-----					MANCUNUM/E. LANC.	G	28870 1400Z-Th
DALLAS COWBOYS	TX	28580	2000CT	0100Z-Fr			
FRIDAY							
CHAPTER	QTH	FREQ.	L/TI	ZULU	CHAPTER	QTH	FREQ. L/TI ZULU
1-----					5-----		
OCEAN STATE	RI	28765	1930ET	2330Z-Fr	TRUTH OR CONSEQUENCES		28512-28580 2330Z-Fr
2-----					6-----		
BROOKLYN BRIDGE	NY	28850		2330Z-Fr	WILD BURRO	CA	28698 2000PT 0300Z-Sa
3-----					DX-----		
FORT MCHENRY	MD	28770		0000Z-Sa	CITY OF MELBOURNE	VK	28580-28512 2330Z-Fr
4-----					DOWN UNDER	ZL	28530 2230Z-Fr
CHEMAM COUNCIL	GA	28110	1900ET	2300Z-Fr	NORTH SEAS	DN	28835 1600Z-Fr
TEXTILE EMPIRE	AL	28795	2000ET	0000Z-Sa			
SATURDAY							
CHAPTER	QTH	FREQ.	L/TI	ZULU	CHAPTER	QTH	FREQ. L/TI ZULU
1-----					9-----		
MURPHY'S LAW		28830		1500Z-Sa	MILWAUKEE GUARDIAN	WI	28805 1500Z-Sa
2-----					0-----		
TROTTERS AND PACERS	NJ	28755	0930ET	1330Z-Sa	MO-KAN	MO/KAN	28842 1000CT 1500Z-Sa
4-----					COLO. BIG HORN	CO	28895 1100MT 1700Z-Sa
DRUID CITY		28665		1400Z-Sa	SKY BLUE WATERS	MN	28150 2000CT 0100Z-Su
SPACE SHUTTLE	FL	28660		1500Z-Sa	WAR EAGLE		28900 2000Z-Sa
TREASURE COAST	FL	28880	110ET	1500Z-Sa	0X-----		
5-----					ALASKAN IDITAROD	KL	28849 2000Z-Sa
OUTLAW	TX	28664		2000Z-Sa	BIROWING	VK	28525 2300Z-Sa
REPUBLIC OF TEXAS	TX	28560	1000CT	1500Z-Sa	BRAZIL CHAPTER	PY	28750 1800Z-Sa
6-----					BRISBANE SUN VALLEY	VK	28586 2300Z-Sa
CITY OF ANGELS	CA	28655	0900PT	1600Z-Sa	CANTERBURY	ZL	28715 2200Z-Sa
JOSHUA TREE	CA	28865	0900PT	1600Z-Sa	DOGWOOD	VE	28815 0300Z-Su
RIVER CITY ARC	CA	28870	1200PT	1900Z-Sa	FESTIVAL CITY	VK	28540 2330Z-Sa
7-----					FLAGSTAFF	VK	28545 0100Z-Su
CHIEF SEATTLE	WA	28625	2000PT	0300Z-Su	GOLD COAST	VK	28585 2300Z-Sa
CITY OF ROSES	OR	28825	0900PT	1600Z-Sa	HERNANDARIAS	LU	28720 1700Z-Sa
COLUMBIA RIVER	WA	28775		1800Z-Sa	JOHNNY CANUCK	VE	28650 0000Z-Sa
CRATER LAKE	OR	28930	1030PT	1730Z-Sa	LAKE GENEVA	H89	28850 1500Z-Sa
LILAC CITY	WA	28790	1000PT	1700Z-Sa	LAKE GENEVA	H89	28185 1500Z-Sa
NORTHERN NEVADA	NV	28711	1230PT	1930Z-Sa	LONDON	G	28955 1400Z-Sa
8-----					MANCUNUM	G	28870 1300Z-Sa
CHRISTOPHER COLUMBUS	OH	28640	1400ET	1800Z-Sa	POWER VALLEY	VK	28570 0000Z-Su
9-----					TARCHANG	JA	28580 1200Z-Sa
PARROT	IN	28815		1500Z-Sa	FAST	JA	28680 1300Z-Sa
					WELCOME STRANGER	VK	28530 0000ZSu
DAILY							
CHAPTER	QTH	FREQ.	L/TI	ZULU	CHAPTER	QTH	FREQ. L/TI ZULU
3-----					DX-----		
CRAZY EIGHTS	PA	28888	2000ET	2300Z	LA GROUPE 10M	F	28700 1700Z
7-----					OTAGO 45 SOUTH	ZL	28050 0100Z
CHIEF SEATTLE	WA	28625	2000PT	0300Z	RHONE ALPS	F	28850 1800Z
0-----							
SKY BLUE WATERS	MN	28715	2100CT	Ex.Mc			
10-X INTERNATIONAL							
MON ONLY	CA	28775		1800Z	MON TO SAT	CA	28800 1800Z



# COMING EVENTS



1983

JULY

24

The Summer Picnic, of the 10-10 International Net will be at Buena Vista Park in Burbank, CA. Get off the Ventura Freeway at Buena Vista Street. The park is on the north side of the freeway. (Location is just east of the NBC studios parking lot) Bring all your own goodies, tables, chairs, etc. Talk in on 146.52 simplex. . . .Come early!

AUGUST

19-21

ARRL Pacific Division Convention to be held at the MGM Grand Hotel in Reno, Nevada. Featuring Roy Neal, K6DUE, NBC News Science Editor.

SEPTEMBER

1-30

Throughout the month of September, 1983, Bill Tschopp, WB4TAL #36412 will operate as a "Special Event" station from within the Clemmons United Methodist Church in Clemmons, NC. The occasion will be the celebration of the churches 200th anniversary. Operation will be in the general portions of the phone bands. CW will be available on request. A commemorative QSL will be available. SASE to WB4TAL, P.O. Box 366, Clemmons, NC 27012.

15

Deadline date for Fall issue of the 10-10 NEWS.

24-25

10-10 International Net Fall CW QSO Party. See announcement in this issue.

25

The Norwalk Keystone City Chapter of 10-10 will host a picnic at 1:00 PM on Sunday September 25, 1983 at Norwalk Park in Norwalk, CA. Everyone is invited. Sandra, VK4NUE, and her OM Phil, from Brisbane, Australia, will be our honored guests. It will be a great chance to meet and talk with them. Bring your own food and drinks (beer and other libations are permitted) and join the fun. Chapter will furnish coffee and there will be donation prizes. Directions: Take Santa Ana freeway (I-5); Get off at Norwalk Blvd. Go West (Norwalk Blvd. changes into San Antonio Dr.) to Sproul St. Turn left on Sproul; go 2 blocks to the park. Look for the large wooden 'A' frame in the park.

OCTOBER

1

10-10 Closed Contest. See announcement in this issue.



# 10-10 INFORMATION

## How to become a Ten-Ten Member

Work 10 present members on 10 meters. Log each 10-10 number, call sign, date worked, op's name, location. Send list to your Call Sign Area Manager, with \$1 Registration Fee, \$4 for first years dues (foreign \$5, U.S.). Novices, foreign applicants need work only 5 present members; novices pay no Registration Fee. You will receive a Certificate, and be assigned a permanent 10-10 Number. You must pay annual dues to remain in good standing, receive the News, and participate fully in all activities.

## How to earn Bars and Plaques

Log the 10-10 numbers of stations you work on 10 meters, all bona-fide number exchanges on the air. Then list 100, no more, no less, no duplicates, thus:

1. List in serial order of 10-10 numbers. Show call, handle and location.
2. Submit only one list of 100 at a time.
3. Log books or copies of log book pages are not acceptable.
4. Give your name, address, call sign, 10-10 number, and state which Bar you are requesting (i.e., 100 Bar, 200 Bar etc.)
5. Enclose a large size SASE (20¢ First Class).
6. Mail as follows: 100-900 Bars, Willie E. Madison, WB7VZI, 10512 W. Butler Dr., Peoria, AZ 85345. 1000 Bar and up, Bill Risher, WB6OMH, P.O. Box 277, Twin Peaks, CA 92391.

With your 500 Bar comes an honorary V.P. Number, and other activities. A 500 Certificate costs \$1. Plaques are awarded for 1000, 2500 and 5000 contacts, and cost \$3 each plus 37¢ postage. Make checks payable to 10-10 Int'l Net, Inc. Please do not send cash.

## How to earn WAS

After working and getting QSL card confirmation on one 10-10 member in each of 50 states, prepare an alphabetical list by states with full data on each contact. Mail cards and list to Susan Brackeen, K1CAD, P.O. Box 7081, Johnston, RI 02919. U. S., Canadian, Mexican members send \$2.42, U.S. funds, for certificate cost and return postage. Overseas members may save about half the postage cost by sending non-returnable copies of QSL cards (Fax, Xerox, etc.). More than one card per sheet is OK, but all required information must appear, including 10-10 number. Show both sides of card only if necessary for complete information. Also include alphabetic list of states with full information on each contact, your own complete information, including 10-10 number, and \$2.60 U.S. funds for cost of certificate and return postage. Address application to K1CAD, as shown above. Please do not send cash.

## Countries Award

The Countries Award is given for confirmation (QSL's) of QSO's exchanging 10-10 numbers with members in 25 or more countries. Cost is \$5.00, U.S. funds. For complete rules and application form, send business size (#10) SASE to Alan Sherman, K1AS, RR#2, Box 662, Danielson, CT 06239, U.S.A.



Make any checks payable to 10-10 International Net, Inc. DO NOT SEND CASH. Canadian, Australian and New Zealand applicants are reminded that dollar amounts quoted are U. S. dollars. Your bank can tell you how much to send in your own currency to make up the required amount in U. S. funds.

Award applicants must show proof of paid-up 10-10 membership by enclosing Xerox or similar copy of current membership card or address label from a recent issue of the 10-10 News.



# MANAGERS

*Ten-Ten International Net, Inc.*  
Monitoring 28,800 KHz—Daily Except Sunday

## U.S.A. CALL SIGN AREAS:

1. Earle White	W1NC	117 Brattle St.	Arlington, MA	02174
2. Larry Berger	WA2SUH	9 Nancy Blvd.	Merrick, NY	11566
3. Jim Duppins	WA3RBQ	2317 Windsor Ave.	Baltimore, MD	21216
4. Clint Paine	K4EKX	309 3rd Ave	New Port Richey, FL	33552
5. Grace Dunlap	K5MRU	Box 445	La Feria, TX*	78559
6. Dick Rauscher	W6ANK	4371 Cambria St.	Fremont, CA	94538
7. Willie Madison	WB7VZI	10512 W. Butler Dr.	Peoria, AZ	85345
8. John Hugentober	N8FU	4441 Andreas Ave.	Cincinnati, OH	45211
9. Berniece Tielemann	N9CDO	Rt. #1	Lenzburg, IL	62255
Ø. Kevin Schleicher	WDØBXU	469 Main Street	Lino Lakes, MN	55014

\*Mid-May to mid-October, K5MRU's address is Box 13, Rand, CO 80473.

The 4th Call Area has been further divided as follows: VA, NC, SC: Malcolm Spangler, K4KUT, Box 481, Shelby, NC 28150; KY, TN: Doug Henry, WA4SFN, Rt. 2, Box 37, White Pine, TN 37890; AL, GA: Jim Beswick, W4YHF, Rt. 5, Box 77B, Ellijay, GA 30540; FL: K4EKX (see address above).

## DX AREAS

ZL: T.J. "Mac" McKENZIE, ZL3RK, 73 Cygnet St., Christchurch 9, New Zealand

VK: ART HART, VK2BXN, Box M514, Sydney Mail Exchange, NSW 2012, Australia

VE, VO: REG PEARSON, VE3RG, 23 Judith Dr., Toronto M4J 2S3, Ontario, Canada

OTHERS: CARL SCHOEN, W4NJS, 2616 Glenhaven Ln. Winston-Salem, NC 27106 USA

## Order Form

<u>QTY</u>	<u>ITEM</u>	<u>PRICE</u>	<u>AMOUNT</u>
___	Annual Dues, U.S.A. Members      New ___ Renewal	\$4.00	___
___	Annual Dues, Foreign Members      New ___ Renewal	\$5.00	___
___	Registration Fee* (not required of novices)	\$1.00	___
___	10-10 Stamps (100)	\$1.00	___
___	Membership Roster (Postage paid)	\$3.50	___
___	Membership Roster by AIR (Not avail. U.S., CANADA, MEXICO)	\$5.50	___
	Total		___

\*Registration fee is required of all new members. Make any checks payable to 10-10 International Net, Inc. DO NOT SEND CASH. Canadian, Australian, New Zealand applicants are reminded that dollar amounts quoted are U. S. dollars. Your bank can tell you how much to send in your own currency to make up the required amount in U. S. funds. Other DX member orders, through W4NJS, payable by International Postal Money Order only.

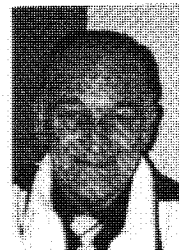
Complete the following by typing/printing and mail to your Call Area Mgr.

10-10 No. \_\_\_\_\_ Call \_\_\_\_\_ Name \_\_\_\_\_  
Address \_\_\_\_\_ City \_\_\_\_\_ State \_\_\_\_\_ Zip \_\_\_\_\_

Please enclose an SASE or stamps !

*From the desk of*

Jim Michaels, W6PGM, 10-10 #10



My thanks to those who submit articles, events and pictures for publication in the news. This is your periodical and what you see here is what you send. Please read the important information on page 2 of this issue when submitting material to the editor.

To Mickey Principe, KB5UP, my appreciation for the fine manner in which you have handled the Net Guide. The members also send along a hearty 'Thank you'.

Sherm Sherman, K6PTF, International Net Manager, expresses his appreciation to the following members who have assisted and substituted for the regular Net Control operators: Paul, W6AOP; Terry, N6DQP; John, W6LII, Bob, W6MDK and Bill, N6UW.

In this issue you will see the results of Spring 10-10 CW QSO Party. The responsibility for tabulating the results of this contest rested with the Music City U.S.A. Chapter in Nashville, TN. Those of you who have not had the opportunity to participate in contest scoring may not realize what a time consuming task it is. Those who have, certainly can appreciate the magnitude of the job. Speaking for the 10-10 officials, I wish to thank all of the chapters who participate in this important function. As editor, I can say that you are doing a great job of submitting very professional, camera ready material... . I appreciate it 73, Jim

## Is it That Time?

Look at the mailing label below. In the center of the top line there is a four-digit number which tells you the expiration date of your 10-10 membership. The first two digits indicate the month, and the last two the year. If your membership has expired or is about to expire, RENEW NOW. Send your annual dues to the manager for the call area that has the same number as in your own call sign. His or her name and address may be found on p. 31. Foreign members should send renewals to the appropriate DX area manager. There is no penalty for reinstatements. Look at your address label and RENEW NOW!

Lee Pasewalk, WB6MGM (Rec. Mgr.)  
18815 Yukon Ave.  
Torrance, CA 90504

BULK RATE  
U. S. POSTAGE  
PAID  
PERMIT NO. 1  
GARDENA, CALIF.

TEN-TEN INTERNATIONAL NET, INC.

**SUMMER**

**1983**

... YOU HAVE TO MAKE CONTACTS TO GET RESULTS...