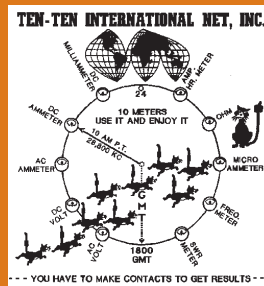


N e w s

VOLUME 46 ISSUE 4

\$1.50

OCTOBER 2008 (AUTUMN)



TEN - TEN INTERNATIONAL

Daily Nets At 1800z 28.380 And 28.800

www.ten-ten.org



TEN-TEN INTERNATIONAL

2008

Scholarship Winners



The 10-10 International News

Is published four times annually by the TEN-TEN INTERNATIONAL NET, INC.
Publication dates are approximately mid January, April, July and October.

Each paid-up member will receive a copy. This is an independent publication.
Permission to reprint is hereby granted, providing suitable credit is shown.

News items should be sent to the Editor. Technical articles and information on all 10 meter activities or news are welcome and solicited. All copy submitted must be typed, sent on computer disk or E-mail. Suitable formats will be provided upon request.

Photographs are encouraged. Black and White or Color are acceptable. Include complete information on the back of each photo. Attach a label or other suitable paper to the back of the photo and write all information on the label, not the photo. If sending digital images, high resolution of a minimum 300 dpi must be used. Please do not send newspaper or digitally printed photos as they cannot be used.

Please mail all articles and photos to:

EDITOR 10-10 News
Paul N. Riedel K10SR #8861
18 Battersea Ct. O Fallon MO 63366
E-mail: pnriedel@earthlink.net

10-10 CHAPTER ACTIVITY REPORTS should be sent to the Chapter Coordinator
ADDRESS CHANGES: All members should send address changes to the Data Manager
NOTE: 10-10 IS NOT RESPONSIBLE FOR POSTAL SERVICE DIFFICULTIES

DEADLINE FOR NEXT ISSUE: 1 DEC 2008



Member
AMATEUR RADIO NEWS SERVICE

OFFICERS, DIRECTORS AND NET OFFICIALS

Award Managers listed on page 24 - Membership Information listed on pages 30-31

President

Gerry Gross, WA6POZ #21274 (2010)
16046 Orchard Cir., Omaha, NE 68135-1068
(402) 895-7367 wa6poz@arri.net

Past President

Chuck Imsande, W6YLJ #19636 (2010)
20815 Desert Sands Dr., Sun City West, AZ 85375-5443
(623) 214-8788 chuck@w6ylj.com

Vice President

Larry Berger, WA2SUH #00407 (2008)
9 Nancy Blvd., Merrick, NY 11566-3119
(516) 223-4611 wa2suh@aol.com

Secretary

Sandy Glenn, W7SSG #74633 (2010)
252 Circle Dr., Underwood, WA 98651-9029
(509) 493-4169 ssglenn52@hotmail.com

Treasurer

Keith Schlottman, KR7RK #63324
9581 E. Calle Cascada, Tucson, AZ 85715-5819
(502) 290-5883 keith@schlottmanpcpa.com

Directors

Robert L. Farrow, N6OPR #45715 (2008)
14814 Gagely Dr., La Mirada, CA 90638-2116
(562) 944-9040 N6OPR@msn.com

Ken Harmon, K1IEQ #31363 (2010)
471 Turnpike Rd, Mason, NH 03048-4722
(603) 878-1887 K1IEQ@juno.com

Rob Ireland, VE9KM #69811 (2008)
31 St James Street, Sackville, NB E4L Canada
(506) 536-1038 rireland@mta.ca

Leslie Johnson, WA4EEZ #15675 (2008)
6601 Bougainville Ave. S, St. Petersburg, FL 33707-2213
(727) 347-7422 wa4eez@arri.net

Brad Kimble, K0DBK #55192 (2010)
3855 66th St. E, Inver Grove Hgts, MN 55076-2222
(651) 450-1173 k0dbk@comcast.net

Jack Moore, K5CC #50708 (2008)
371 Ridge Creek Lane, Bulverde, TX 78163-2871
(830) 885-2194 k5cc@gvvc.com

Cliff Taylor, K5FBS #48461 (2010)
22707 Red Mountain Dr., Elmendorf, TX 78112-6034
(210) 621-2652 k5fbs@yahoo.com

Certificate Manager

Ruth Bartholomew, N0KDB #48715
1043 Franklin Court, Sullivan, MO 63080-5502
(573) 468-2898 or (314) 479-5474 n0kdb@fidnet.com

Chapter Coordinator

Cliff Taylor, K5FBS #48461
22707 Red Mountain Dr., Elmendorf, TX 78112-6034
(210) 621-2652 k5fbs@yahoo.com

Data Manager / Supplies

Data Manager, 10-10 International Net., Inc.
PMB 142, 643 N 98th Street, Omaha, NE 68114-2342
(402) 895-7367 wa6poz@arri.net

Editor 10-10 International News

Paul N. Riedel, K10SR #8861
18 Battersea Ct., O'Fallon, MO 63366-1156
(636) 281-9301 pnriedel@earthlink.net

General Counsel

Dave Splitt, KE3VV #69831
6111 Utah Avenue NW, Washington, DC 20015-2461
..... davidsplitt@erols.com

Net Manager

Robert L. Farrow, N6OPR #45715
14814 Gagely Dr., La Mirada, CA 90638-2116
(562) 944-9040 N6OPR@msn.com

QSL Bureau Manager

Terry Webb, N0TW, #36547
1103 Fulford Road Monticello, FL 32344-4352
(614) 216-5334 n0tw@dishmail.net

QSO Party Manager

Dan Morris, KZ3T #41015
131 Valencia Lane, Batesville, NC 28625
(828) 728-5049 dbm72941mo@roadrunner.com

Scholarship Manager

Larry Berger, WA2SUH #00407
9 Nancy Blvd., Merrick, NY 11566-3119
(516) 223-4611 wa2suh@aol.com

SK Manager

Ruth Bartholomew, N0KDB #48715
1043 Franklin Court, Sullivan, MO 63080-5502
(573) 468-2898 or (314) 479-5474 n0kdb@fidnet.com

W6OI Station Trustee

Jack Moore, K5CC #50708
371 Ridge Creek Lane, Bulverde, TX 78163
(830) 885-2194 k5cc@arri.net

Webmaster

Darwin Piatt, W9HZC #73090
10532 Larimore Circle, Omaha, NE 68134
(402) 991-0412 dw-piatt@cox.net

News & Views

Paul N. Riedel, KI0SR #8861
EDITOR 10-10 NEWS



Here is the second issue of the News. Many thanks to all of the contributors for your help and suggestions, it makes my job easy.

I hope everyone likes the new look of the News, I wish we could put color on every page but cost will not allow it.

Let me know what you think, and as always all suggestions are welcome. Please send photos, articles or anything else you think we could use.

Again thanks for your help and have a Happy Halloween

73 Paul, KI0SR, #8861

CONTENTS

AN-Ten-Ten-nas	10
Award Listings	23-24
Award Managers	25
Scholarship Winners	7
Chapter Coordinators Column	12
Dx News	14
Convention 2009 Orlando	6
Life Members	16
Meet the Volunteers	17
Membership Application	31
Membership Information and Services	30
Net Guide	29
Net News	22
Officers, Directors and Net Officials	2
President Report	4
QSO Party Cover Sheet	32
QSO Party Results	25-26-27
QSO Party Rules	28
Quarterly Net Report	22
Scholarship Application Information	21
Scholarship Foundation Supporters	20
Silent Keys	18
W6OI On The Air	9

And much more

10-10 NET CONTROL STATIONS

ALL NETS BEGIN AT 1800Z

Monday (28.380)	Dick, K6PZE #01341
Monday (28.800)	Doc, WB6OJB #70675
Tuesday (28.380)	Brian, KC7OC #67668
Tuesday (28.800)	Bob, K4QHH #26040
Wednesday (28.380)	Chris, N7PVL #58018
Wednesday (28.800)	Louise, N6ELK #36654
Thursday (28.380)	Bob, N6OPR #45715
Thursday (28.800)	Robert, KQ4PK #63201
Friday (28.380)	Bill, KB9MJ #22313
Friday (28.800)	Tom, KA9EKG #70731
Saturday (28.380)	Bob, W2BOC #71069
Saturday (28.800)	Earl, KS4XI #70679
Sunday	"NEVER ON SUNDAY"

Alternate Net Controller	John, NS2M #72143
Alternate Net Controller	Dan, KC8IM #31959
Alternate Net Controller	Steve, KB3KTR #74187
Alternate Net Controller	Ann, KE6OIO #68997
Alternate Net Controller	Earl, KA6RFB #59088





From the office of the
PRESIDENT
10-10
International

Gerry Gross
WA6POZ #21274

As this goes to press the 2008 election process will be winding down. Ballots must reach the Chief Teller by October 1, 2008. Counting must be finished and results tabulated by November 1st. At that time the results will be made available on the 10-10 Web and will be printed in the January 10-10 NEWS. The next election will be in 2010, in which all Officers, President, Vice President and Secretary and four Directors will be selected. It is never too late to think about running for a position. Start now by learning about 10-10, volunteering to help and then be prepared to step forward as the election process begins again in January 2010.

As I wrote in the last 10-10 NEWS June's weather was not the best here in Omaha. That article was written in the middle of the month and until then we had only seen a tornado and straight line winds go through the neighborhood. The month ended when the Friday prior to Field Day, Omaha again got hit with straight line winds. This time my Hi-Tower came down. I have decided not to replace it as this is the second time it has fallen. Both times high wind and both times the three insulators at the base broke.

Tribute to Steve Rasmussen, NOWY, #68684

As had been mentioned in previous issues Steve Rasmussen, NOWY, #68684, 10-10 Director, the previous 10-10 Editor and QSO Party Manager went into the hospital early January 2008. Steve was diagnosed with leukemia. He endured 6 months of chemo maintaining a positive outlook that he would beat this illness. Steve passed away on July 30, 2008.

On July 12th I presented Steve Rasmussen, NOWY, #68684 the 2008 President's Award. It was done at the Fremont ARC Hamfest in North Bend, NE. It was witnessed by over 200 attendees at the hamfest. I had asked for and received several suggestions from several Directors and others that awarding it to Steve would be highly desirable as a fitting tribute to his many contributions to 10-10 as Editor, QSO Party Manager and assistant to anyone who asked.

The Award made in early June and not being sure what



Steve Rasmussen, NOWY, #68684 receiving the 2008 Presidents Award from President Gerry Gross, WA6POZ, #21274

Steve's health status would be, I waited until a golden opportunity came forth to present it. Steve came home from the hospital the week prior to the hamfest and I learned that Steve, rain or shine, would be at the Hamfest and made arrangements to present the award. Steve had not been feeling well and was extremely tired but made the trip anyway. Steve was tired; just when I had planned to make the presentation, he went out to his car and took a nap. He returned later and the plan was executed. Steve was caught off guard and surprised and thanked all for the award.

Later I learned that Steve went back into the hospital that evening after experiencing breathing problems. He returned home after a week but was readmitted a few days later when it was learned that his blood counts were very low. I spoke to Steve over the next few days and planned to visit him. On Tuesday evening, July 29, 2008, Sandy, Steve's wife called and said Steve was not doing well and wasn't expected to make it through the night. I was in the middle of holding VE exams. Upon their conclusion I went to the hospital. Steve passed away the next day at approximately 2:00 pm CDT.

Memorial Services for Steve were held on August 5, 2008. I spoke representing 10-10 and the Amateur Radio Operators of the Greater Omaha area.

QSL Bureau Managers retirement and replacement

The last week in June I received an email from Bob

Peschka, K7QXG, #05956, asking that a replacement be found for the position of the 10-10 QSL Bureau Manager. Bob and his wife, Shirley started the bureau in November 2003 and have been doing a truly magnificent job for the past 4 plus years. Bob feels that this is the right time to retire as we are at the low in sun spots cycle and the bureau can only become more active in the coming years. Bob's effective retirement date was going to be December 31, 2008 unless a replacement was found sooner. A replacement has been found so the transition to the new QSL Bureau Manager will be October 15, 2008.

The new QSL Bureau Manager will be Terry Webb, N0TW, #36547. Terry lives in Monticello, Florida which is just east of Tallahassee in the panhandle. He has been licensed since 1961 when he received the call of WN9AWU. He received his current call in 1974. Terry is an Electrical Engineer working for H2Engineering in Tallahassee, Florida. He will be fully retired in about 2 years so he will have lots of time for the QSL Bureau as the cycle peaks. His radio ranch is about 9 acres and supports two towers of 100 and 120 feet. One tower supports a 4el SteppIR. Terry is familiar with the QSL Bureau service having served as a QSL sorter with the 8th QSL Incoming Bureau for about 10 years.

As this is being written Bob and Terry are making arrangements to have current inventory of cards, envelopes, etc transferred.

Summer QSO Party

Elsewhere in this edition of the NEWS are the results of the 10-10 Summer QSO Party. A summary of conditions can best be described as 'Wow!' Just look at the number of log submissions and scores. This was at the bottom of the cycle and on a weekend with no sunspots. I didn't expect much so I made the usual Saturday and Sunday commitments, but I still made over 250 contacts. Hearing so much activity and making contacts with so many areas around the US and Canada I anticipated lots of mail and I wasn't disappointed. 226 new members joined 10-10 during August. Last year in August 10-10 had 140 new members and the record for a single month is February 2002 when 230 members joined 10-10.

To the 226 new 10-10 members in August and to the many others that have joined 10-10 in the past. Welcome! The 10-10 Information Manual sent with your initial membership card and certificate explains many of the awards and operating events that 10-10 sponsors. This issue of the 10-10 NEWS as well as others contains a large amount of information on the many 10-10 Chapters across the

US and around the world. Join in and participate. Visit the 10-10 web site often, as you will always find what's happening with Breaking News. Also join the 10-10 List and share your ideas with your fellow 10-10er's. Just a reminder for new members, in order to earn 10-10 Awards, 10-10 numbers must be exchanged. Contacts made prior to receiving your own 10-10 number do not count.

10-10 Data Manager

One item informally discussed prior to the last Board meeting was the eventual replacement or backup for the 10-10 Data Manager. I have held that position since 1993 and while I am not quite ready to give that position totally up, the day is coming when I know I will. The Data manager performs can be separated into two areas, publications and membership services.

Publication deals with the printing and mailing of the 10-10 News. The NEWS is printed and mailed currently from Omaha but that can be changed to another printer and location. Domestic mail is mailed by the printer. The NEWS to DX members must be manually inserted into envelopes, renewal letters added to the appropriate member envelopes, and the correct postage placed on the envelope depending upon its destination. Other responsibilities include the storing and shipping copies of the NEWS to support hamfest and convention requests.

Membership Services deals with the processing of new and renewal memberships, mailing address and call sign changes and the general maintenance of the 10-10 Database. An important aspect of this position is that mail sent by 10-10 would have this individual's return address.

If you are interested in learning more about either position please contact me.

During the course of a year many 10-10 positions become available. It is not always desirable to wait until the next issue of the NEWS to post a vacancy so the announcement is made on the Breaking News section on the 10-10 web and sent out on the ten-ten list. Please join the list and visit the web to keep current with 10-10 happenings.

TEN-TEN INTERNATIONAL CONVENTION 2009



Orlando, Florida

July 24 to July 26, 2009

Registration will begin after January 1, 2009

Here it is Monday morning as I write this, the sun is up; the rain is gone and 28.120 sounds like yesterday's breakfast sizzling in the skillet! Cycle 24 is like an old time burlesque dancer, showing us a little here and a little there while keeping the majority of the goodies under wraps. None the less things are popping down here in Orlando as our members of the Cypress Chapter prepare for the 10-10 Convention in 2009. My question to you is "are you coming"? Registration forms will be in the January 2009 Ten-Ten News.

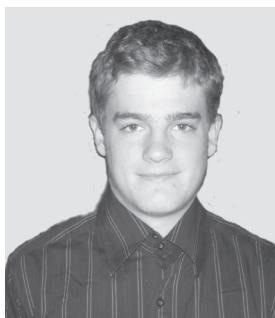
This is one convention you won't want to miss. If it's your first convention then it is sure to be a memorable one. First off there's the Florida sun, next is a really great hotel (Holiday Inn Select) and a gathering of some of the finest amateur radio operators on the bands. And don't forget that a 10-10 convention is **THE** event to attend which will enable you to join chapters you can't reach due to current propagation. Along with this, you will have the opportunity to obtain upgrades to the chapters you are currently a member of in there form of points and seals. Many chapters will be issuing convention only upgrades to their chapter certificate programs. And let's not forget the famous convention net where you can pickup a whole fistful of contacts and numbers all at once!

If you're fairly new to 10-10 then for sure you won't want to miss this convention! Come and learn how 10-10 works where you can visit a a room filled with 30 tables from active chapters in attendance. Attend the "paperchaser" forum and learn more about one of the central features of the 10-10 International Net. Come face to face with those amateurs who you've only heard on the air or seen on the waterfall along with those that make up the Board of Directors and the Chapter Heads and Certificate Managers. For those of you that are non-hams we have put together a trip to Universal City Walk where you can shop and eat in one of the prime tourist attractions in Florida, Universal Studios.

We have lined up a great meal for one and all for the dinner segment of the convention, with a special speaker who will please everyone in attendance. Of course we will hear from our President, WA6POZ who will give away some very worthwhile door prizes. Think of how nice it would be to attend the convention where you can pickup contacts, chapter memberships, **AND** possibly a new rig! Above all else, you will create memories and friendships that far outlast the short time you will spend with us down in the Sunshine State.

If you have a suggestion or idea for the convention e-mail Ken, K1IEQ, #31363 at k1ieq@juno.com

2008 SCHOLARSHIP WINNERS



James Dunn, KC0KTP

I am James Dunn but all my friends and family call me Riley, my middle name. I have just graduated from a Jesuit High School in Kansas City Missouri in which I played soccer and took part in the Spanish Club. Ham Radio has always played a large role in my life be it through talking to my uncle or helping assist with Field Day. I have recently joined a fraternity at the University of Kansas in which I take part in Planning Philanthropic events as well as social events. Besides all the activities that will take up much of my time KU, I plan on assisting the KU Ham Radio club. At the KU I hope to Major in Business, maybe with a concentration in Finance or Accounting and I will try my hardest to achieve another major in Spanish. I hope this dual-major plan will assist me in the future as well as to spread the good communications a devoted Ham. Without Ham Radio I would have lived without many friendships that I have made along the way as well as lived without the respect that

we need another safety net for large life threatening events (earthquakes, terrorist attacks, etc). This scholarship will go far in paying for my first semester of college and will also assist me in a smooth transition from High School.

Francis T. Gradijan, KD5HTB #70925

Francis is currently studying law at the University of Texas at Austin. In Spring 2008, he graduated summa cum laude from the University of Scranton with a BS double major in Political Science and International Studies. He won the school award for International Studies majors, and is a member of Pi Sigma Alpha (Political Science Honor Society), Pi Gamma MU (Social Sciences Honor Society), and Alpha Sigma Nu (Private School Honor Society).

During his time at Scranton, Francis served as editor-in-chief of the campus academic journal; opinions editor of the school newspaper, president of the U. of S. College Republicans; worked as a campus tour guide; served as a radio-station disc jockey; and was president and founder of the International Politics Club, a Model-UN organization with over twenty members.

He has worked in the United States Senate for the Senior Senator from Texas, in the Pennsylvania Bureau of Workers Compensation, and was an American Academy of Political Science Junior Fellow for 2007-2008. He spent a year living and studying in Beijing, China and has pursued nearly three years of Mandarin Chinese studies. Francis is currently active on six and ten meters.



Nathaniel Heatwole, WZ3AR

Like many hams, I started out in CB radio. Not long after I got my ticket, N3RR, a local contest, invited my father and me to tour his elaborate station, which sparked my interest in contesting. Several months later, another local, K3LP, invited me to participate in an upcoming contest multi-op at his QTH and in time, I soon joined the Potomac Valley Radio Club (PVRC), the mid-Atlantic region's premier contesting club. While my school commitments limit my operating during the academic year, I do regularly participate in Field Day and the IARU and IOTA contest. I am also a DX'er paper chaser and have earned DXCC, 5BWAS, 5BWAC, and USA-CA. I have also taken several IOTA DXpeditions to Chincoteague Island, VA. In 2006, I received my B.A. degree from Guilford College in Greensboro, NC (double major in Physics and Political Science), and at Present, I am a third year Ph.D. student in the department of Engineering and Public Policy at Carnegie Mellon University in Pittsburgh, PA.

Jacob Wagner, KD8CDC #74706

Jacob Wagner was born April 22, 1989 in Euclid, Ohio. He is the grandson of Mary Wagner, KA8MOH, nephew of John Wanger, K8CD, and nephew of Gary Wagner, N8SIO. He got his Technician license in September, 2005 and has since upgraded his license to Extra class. He is also active an active VE and a member of 10-10, ARRL, and Cuyahoga Amateur Radio Society (CARS). He worked with his high school to create an amateur radio club. He is active on HF and 6 meters operating voice and digital. An avid contest, he has won first place for his category in the Canada Day Contest (2007) and second place for his category in the 2007 Washington State Salmon Run. He attended Rocky River High School and graduated in the top 5% of the class with a GPA of 4.449. He is attending Case Western University in the fall of 2008 to study Chemical Engineering and Biochemistry.



The Workers At The ARRL Convention In Boxboro MA



Front Row: Rob Ireland, VE9KM, #69811, Al Kaiser, N1API, #25468, Ann Habel, KB3GWX, #74600
 Back Row: Gerry Gross, WA6POZ, #21274, Ken Harmon, K1IEQ, #31363



TEN -TEN ARRL SW Convention

Left to Right
 Keith Schlottman
 KR7RK #63324

Robert Farrow
 N6OPR, #45715

W6OI SPECIAL EVENT

The 5th annual W6OI Special Event will be held starting at 0001Z on 22 November and ending at 2400Z on 23 November 2008.

The special Event has designated 10-10 members in all US call areas operating W6OI. The purpose of the Special Event is to have fun, keep ten meters active and advertise 10-10. Special Event QSL cards are available for each call area worked and a free certificate will be given to operators that work all call areas. The Canadian 10-10 Club station, VE9TEN, will be operating from multiple locations. Stations working VE9TEN can count it as a wild card for a US call area if needed to qualify for the certificate. Volunteers (paid up 10-10 members) are needed in each call area. Cliff (K5FBS) and Ray (N5DAS) will accept requests to operate W6OI. Cliff will accept requests from the 1 through 5 call areas and Ray the 6 through 0 call areas. Canadian members should contact Rob, VE9KM for permission to operate VE9TEN.

After operators are selected I will send letters of authorization to operate W6OI along with guidance on operating procedures. If interested contact Cliff at k5fbs@yahoo.com, Ray at rdobson@satx.com and Rob at rireland@mta.ca.

W6OI #109 ON THE AIR

The 10-10 Club station, W6OI, is available to any current (dues paid) member or chapter for use as a special event station such as Field Day, Chapter gatherings, and radio conventions. Send a written application and a copy of your amateur license to include dates and purpose of operation to:

**JACK MOORE K5CC
W6OI LICENSE TRUSTEE
371 RIDGE CREEK LN
BULVERDE TX 78163**

QSL cards are available for special events. W6OI was on the air for the Summer Phone QSO Party on August 2,3. The W6OI Special Event in which W6OI is operated from all US call areas will be on November 22, 23. Louise Chapman (N6ELK) operates W6OI each Wednesday as the Net Control Station beginning at 1800Z on 28.800 MHz. Please SASE when requesting a QSL via:

**LOUISE CHAPMAN, N6ELK
3210 CLARK AVE.
LONG BEACH CA 90808**

Paperchasers working W6OI can request the list from K5CC. W6OI has FIST, SKCC and GERATOL numbers. Contact Brad, K0DBK to arrange a schedule to obtain the FIST and SHCC numbers. Contact K5CC to obtain the GERATOL number.

An-Ten-Ten-nas

INFORMATION
To help you decide
On the best
Antenna for you

L. B. Cebik SK
 W4RNL #41159



In each issue of the News, we shall try to clarify a significant cluster of ideas in antenna work. Our object is to help you make the best decisions about the antennas you buy or build without imposing our own prejudices on you. The more you understand, the better your choices will be.

Frequently Asked Questions about Coax

Over the course of the 15 years that I have been putting together 10-meter antenna notes, certain questions pop up, especially as folks buy new antennas. What the builder and the buyer have in common is that both must attach a feedline, usually coaxial cable, which runs from the antenna to the shack. The length of the coax may be short or long, but everyone knows how to measure the necessary length. The questions that arise involve some that have appeared before and some that are new to this collection.

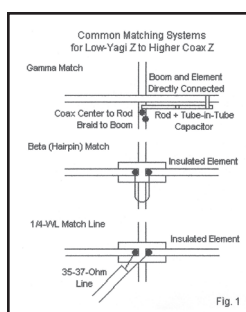
1. *Which coax should I use?* We really have about 4 choices. A. RG-58 (a, b, c, etc.). For all but the most temporary field situations, avoid this cable. Coax losses even when well matched increase with frequency and at 10 meters coax losses become significant. RG-58 has about the highest loss level of any coax available (except for the very thin RG-174). B. RG-8X. This cable is almost as thin and light as RG-58, but with lower losses. Where you need light weight (in the field, with a travel trailer, etc.), this cable can serve very well. C. RG-8 or RG-213. RG-213 replaced standard RG-8 and has tighter, more complete braiding. It is fatter (1/2" outside diameter) and heavier than RG-8X, but usually has lower losses. It also has a higher power rating (considering both voltage and current). If you run the legal limit, this is the minimum cable to use. D. Lower-loss special cables. The LMR series of cables and similar lines are designed for high power and low loss. They have the size of RG-213. However, the losses are lower, and prices may vary with the loss figure.

There are also some specialized cables to consider. Some have special jackets designed for maritime use. Others have jackets designed for use underground with the need for a special conduit. (Be careful of running conduits underground, since they will gather water from condensation alone, even if you add all of the protections from water entry. Put gravel in the conduit ditch and have weep holes to release the moisture.

2. *How do I match my coax to the antenna, especially a Yagi?* If you are purchasing a Yagi, read the manual and find out what the impedance at the antenna feedpoint is. If it is 50Ω, you only need to connect the coax to the

antenna connector and you are almost ready. (But do not stop reading, because there is a precautionary measure to take.)

However, many hams buy used beams with no manuals available. You may be able to obtain information from the maker on line or via regular mail. If you are buying someone's home-built antenna, you may have to use clues to determine what matching system is in use if any. There are 3 main matching systems used on monoband 10-meter beams. Fig. 1 shows what to look for to see which one your beam uses. For 2- and 3-element Yagis, we can design 50-Ω beams, but the booms get longer for the same gain level as shorter beams with impedance (before matching) in the 20-25-Ω region.



If the driver element attaches directly (metal-to-metal) to the boom, then the builder will usually employ a gamma match, as shown on the left. The system uses a rod for inductance and a series capacitor. However, most gamma systems today form the capacitor by sliding a thinner tube inside a fatter tube, with an insulating sheath between. So the capacitor may not be visually evident.

Most beta matches uses what looks like a hairpin across driver terminals that are insulated from the boom. The hairpin may look like a short circuit, but it is actually a length of shorted transmission line that provide inductive reactance. The driver is shortened to make it correctly reactive capacitively, and the two reactances form an L-network to match the lower antenna impedance to the higher 50-Ω coax impedance.

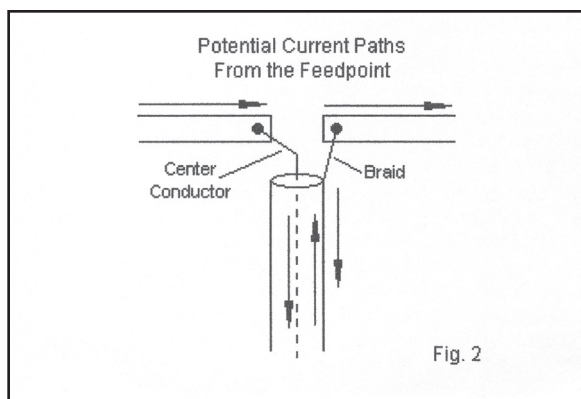
If we make the insulated driver resonant and the feedpoint impedance is about 25 Ω, then we can attach a 1/4-wavelength section of 37-Ω cable between the antenna feedpoint and the main coax line to the shack. Although 35-Ω coax is available, most hams use side-by-side strips of 70-75-Ω cable (such as RG-59) to form a 35-37.5-Ω matchline. At each end, we connect the center conductors together and we also connect the braids together.

All 3 systems work equally well, with low losses. But note that each one requires different circumstances to work. The gamma is for driver elements directly connected to the boom. The beta requires an insulated driver and shortening to make the element capacitively reactive. The 1/4-λ matching section requires an insulated resonant driver. Those are the main clues to what you have. Even though the gamma may also use a shortened driver, you cannot interchange a gamma with a beta, since they need different boom-junction treatments. Element require some change of length depending on whether they attach directly to the

boom or we insulate them from the boom, so changing a match system may detune a given antenna.

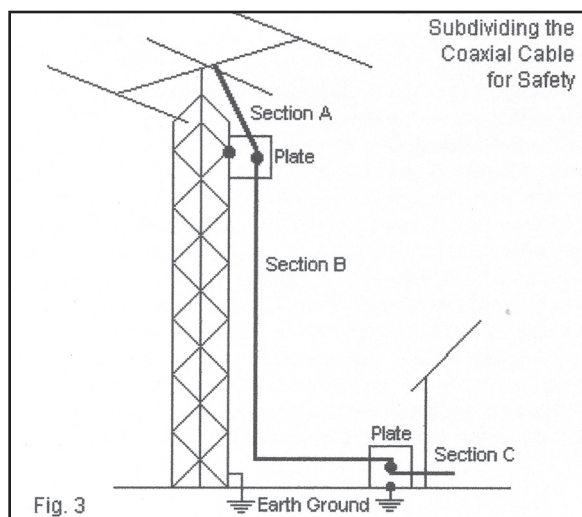
3. *Do I really need a balun at the feedpoint?* The answer here is “no” and “yes.” You do not need a balun to match impedances. However most 1:1 baluns also act as RF chokes, and that is what you need. Let **Fig. 2** be your guide.

When you think of coax cable, mentally separate the inside of the braid from the outside of the braid. The



energy to make the antenna radiate appears between the center conductor and the inside of the braid. When we connect the antenna, the energy from inside the braid can take 2 paths: the element half and the outside of the braid. Whether significant energy flows down the outside of the braid depends on many variables, including the length of the coax. However, it does not take much energy on the braid to throw off the SWR meter, to lock up solid-state circuitry in the rig, and to interfere with other sensitive devices in the home. Therefore, it is wise to add an RF choke that blocks the errant right at the feedpoint. Use any kind of choke that affects only the outside of the braid with no effect on the inside of the coax. A coil of coax will work, but is usually heavy. You must also wind it with care so that the weather cycles will not ruin the spacing between the center conductor and the braid. A 1:1 balun will also work, but most such devices use toroid cores that result in heavy units. The simplest effective choke is a W2DU-type unit that is a linear section of coax with ferrite beads on the outside for about a foot. The unit is light and we can tape it to the boom. A choke at the feedpoint makes good insurance, so I always install one as a precaution, even before checking for RF in the house.

4. *How long should I make a coax run?* I thought we already answered this question. Actually, we only gave the total amount of coax needed to reach from the antenna to the operating position. However, let's now subdivide the coax into three parts. **Fig. 3** shows the parts.



Section A runs from the feedpoint (or the feedpoint and the choke) to a position near the tower's top, but below the rotator. At that point, note the plate that is electrically connected to the tower. (If you are using only a metal mast, substitute it for the tower leg.) The plate uses a double-female bulkhead connector. Essentially, the braid of the coax uses the tower leg as the shortest, most direct path to a good earth ground. Many lightning experts have noted that when a lightning bolt gets into coaxial cable, most of the current is in the braid. So the connection becomes a first line of defense or line for safety.

Section B runs from the plate to another plate at ground level. Here, we have a connector that we can detach and re-attach to a grounded rod long before the line enters the house. There is no reason for a 10-meter amateur operator to be on the air during a thunderstorm. So the safest course is to disconnect the antenna cable(s) out of doors and to re-connect them directly to ground.

Section C runs from the outside plate to the rig. Be sure to disconnect this section of cable from the rig when a thunderstorm is near.

All of these measures require periodic inspection and preventive maintenance to ensure that they all work as well as when freshly installed. Keep records on your SWR curves across the band (and any other bands that you use). Be suspicious if the SWR starts going up. Be equally suspicious if the SWR starts going down since this situation often indicates that the feedline run is getting lossy for some reason. Inspect and test every 6 months or so (every Spring and Autumn). Replace lines every 5 to 7 years, especially if the lines undergo very hot summers, very cold winters, or very heavy precipitation. Give your antenna and feedline system the same treatment that you give a fine automobile, and you will get about the same durability. However, your antenna and feedline should net you many more miles of contacts.

CHAPTER COORDINATOR'S COLUMN

By Cliff Taylor K5FBS #48461



General Comments:

First of all, I would like to announce that I no longer have the email address of catk5fbs@aol.com. In correspondence to me, please use only the k5fbs@yahoo.com one.

If you are a paper-chaser, now is a good time to upgrade the chapters that you have preparatory to the onset of sunspot cycle 24. BTW, if you are new to 10-10, or an old member, and contemplating getting into paper-chasing, the Chapter Relations Committee has updated the section on "Paper-chasing" on the 10-10 International web site. Links to most chapters can be found in the "Chapter Links" section of the site.

As I told you in my last column, some of you, me included, have been unable to use the on-line quarterly report and have been getting a weird message when we try to submit it. The Board of Directors is aware of the problem. Just hang loose and use the form that can be copied and then filled in and sent via USPS or scanned and sent as an email message. Help is on the way.

If you are the chapter head or chapter head/certificate manager, be sure that your dues are current.

Planned specials or worksheets beginning during the period January through April 2009, should be reported to me before the 1st of December 2008, so that I can announce them in the January 2009 **Ten-Ten International News**. (Note: This is primarily for those without email capability.)

If you submit an upgrade to a chapter, and you don't get a response within a reasonable amount of time, before inquiring of the Chapter Manager if the email address is correct, go to the "10-10 Chapters" section of the 10-10 International web site to see if you had the current correct email address correct. If your problem not solved this way, then be sure to query yours truly.

Would you like for the membership to know the history behind your chapter? If you do, please send a brief one and I will use it as space permits.

Another accomplishment of the Chapter Relations Committee was a rewrite of Chapter 7, the chapter about "Chapters", of the Operations Manual. FYI, this rewrite is included at the end of the column.

Quarterly Reports Past Due or Due During October 2008 to January 2009—Dates Listed are Dates of Last Submitted Report: (July 2006) Borinage; (December 2006) North Georgia; (February 2007) Oceans of the World/Sun Coast Radio; (March 2007) Busy Bee; Crazy Eight; (August 2007) Chesapeake Bay; (October 2007) City of Lights; (November 2007) Aloha; Boomtown; Gold City; Red River Valley; Route 66; (December 2007) Chief Seattle; Minuteman/Old Ironsides;

Chapter News

Alii: Word finds are still available from the chapter correspondent, NH6SJ.

Arizona Desert: If you hear this chapter on, be sure to check in. They usually have 20+ members check in so you can add a lot of numbers to your 10-10 members award really quick.

Boomtown: The CH/CM is striving to keep the chapter alive but is physically unable to call the net at times. There is also a problem with the chapter net time, but this will not be addressed until the new solar cycle begins.

Channel Islands: The chapter is still kicking in the contests (QSO parties) and getting new members. We are small, but we push the big chapters. We (usually) come in 3rd or 4th but a few times 2nd.

City of Melbourne: VK3PJB's email addresses are vk3pjb@yahoo.com.au and vk3pjb@tpg.com.au.

City of Roses/Portland Bridges: These chapters are currently inactive.

Down Under: The CH/CM of the chapter, Jack, ZL1KQ, is now a silent key. ZL1AFU has stated that he will let us know about the future status of the chapter.

Fort McHenry/Cornerstone: (October) Collect Fort McHenry Omaha numbers for 1 point each and collect Cornerstone Recruit numbers for 5 points each.

Margarita and Martini: This is a newly affiliated chapter. Information on the CH/CM is: K4JPC, Bobby Ricchiuti, 3780 Charlton Ives Dr., Lilburn, GA 30047, email address k4jpc@comcast.net. As of 16 August, the only IQ for the chapter is the CH/CM. Net information: Sunday at 0059 hours on the frequency of 28.330 MHz.

Michigan Robins: The status of this chapter is unknown. I have been unable to contact the CH/CM either via US postal email or email., so, therefore, the chapter is being carried as inactive.

Oklahoma Route 66: The chapter is still alive and well, but the CH/CM has been ill. He has tried to find someone to take the net but has been unsuccessful. He, therefore, will continue to keep the chapter alive.

Peshtigo Fire: There are 3 worksheets to work on that have a starting date. WACA and WAS are now retro-active.

Restoration Project: Janis' and Garry's THIRTIETH ANNIVERSARY special does not end until 31 December. Details were announced in April 2008's NL.

SNITT: The chapter is currently inactive.

Steel City: (October) Check-ins are worth 10 points each. (November) Check-ins are worth 5 points each. (December) Merry Christmas from the Steel City Chapter. Special net +10.

Whitehouse: The chapter is currently inactive.

Chapters that Accept Upgrades Via Email ((As of 6 September 2006))

All of the listed chapters generally need previous, new, and total points and seals claimed. Any transaction with the CM that requires that a certificate be issued, and most worksheet specials, should still be handled via US Mail. Also to be on the safe side, a detailed listing of the upgrade should be kept in the event that the CM should require verification. Requirements peculiar to a particular chapter are noted below.

(* indicates change)

Alii - CM WH6S, wh6s@hawaii.rr.com. Use form available from the CM.

Battle Road - CM K1IEQ, k1ieq@juno.com

Bauxite - CM K5BKT, k5bkt@nwl.com - Bauxite and Arkansas Visitor #'s only

Bay Area - CM K6RDK (All except for Bay of Bridges), k6rdk@smm.com CM AC6FU, ac6fu@netscape.com (Bay of Bridges)

Boomtown - CM N5EBA, ed_cisse_neal@yahoo.com

Bounty Hunters & Outlaws on Ten - CM WD5EDR, wheberling@satx.rr.com

Borinage - CH/CM ON4CN, claude@on4cn.org

Branding Iron - CM KA5VVD, xit@clearwire.net

Branding Iron II - CM N5SCA, n5sca@sbcglobal.net

Busy Bee - CM kc5qcb@suddenlink.net

Castle Craig & Castle Craig Plus - CM N1API, n1api@cox.net

Chesapeake Bay - CM N3TGB, n3tgb2@aol.com

City of Roses & Portland Bridges - CM KD7UZ, kd7uz@arrl.net

Colorado Centennial, Colorado Frontier Gang/Centurion/

Golden Aspen - CM WB0CON, wb0con@comcast.net

Colorado Quarter-Master - CM KC0CMZ, kc0cmz@msn.com

Cradle of the Confederacy - CM K4PO, k4po@charter.net

Cypress - CM KK3Q, cq1010@cypresschapter.org

Electric City - CM WA2OIZ, istillwell@cfl.rr.com

Fort McHenry, Cornerstone & Yodar Kritch - CM K3TUI, k3tui@juno.com

GB Ten - CM G4KHF, gbten@globalnet.co.uk

Gold City: CM KD5DE, kd5de@nwla.com
Houston S.H.O.T. - CM N5AFV, afmattis@hal-pc.org
Kansas Trails - CM KB6UPG, kb6upg@mchsi.com
Keystone & Keystone Stars - CM KA6GPC, ka6gpc@aol.com
Laurel Mancunium/Emperors/Roman Invasion - CM G3RRM, g3rrm@aol.com
Major League Baseball - CM N6OPR, rlfarrow@catalina-inter.net or n6opr@msn.com
Millennium VIP: CM G4PDR, g4pdr@fsmail.net
Minuteman & Old Ironsides - CM WA1ENO, wa1eno@hotmail.com
Neanderthal - CM CM DK4QO, dk4qo@t-online.de
New Mexico Mud Ducks - CM KM5EH, buckml@lobo.net
New Waterkant - CM DK7LA, dk7la@t-online.de
North Georgia - CM W4GKF, 10x@w4gkf.com
Oceans of the World & Sun Coast Radio - CM K4DRZ, dzak@tampabay.rr.com
Oregon Trailblazer - CM KD7FZY, ckckd7fzy@webtv.net
Palmetto: CM NJ4F, nj4f@arrl.net
Peshtigo Fire - CH KE9MA, ke9ma@charter.net - also need number of contacts
Portland 500 - CM W7HO, portland500@portland500.com or w7ho@arrl.net
Republic of Texas - CM WD8JKV, rmoyer@netbsa.org
Restoration Project & Feline Friends - CM VE7ACM, ve_seven_wpc@yahoo.ca
Route-66 - CM KA9ADD, ka9add@wowway.com
Sky Blue Waters & Tin Lizzie - CM KA0ZIA, skybluwaters@q.com. Also submit total contacts, basic number(s) with current point value, 10-10 number with date of expiration.
Santa Fe Trail: CM KA9PCU, ka9pcu1@juno.com.
South Texas Lighthouse Brigade - CM N5DAS, n5das@juno.com. also total contacts, and date of issue of original certificate. An upgrade form is available via email. Upgrades can be done on-line on the website.
Space Coast - CM K5FBS, k5fbs@yahoo.com
Springbok - CM (for all except Oceania, Asia) W4ZYD, w4zyd@springboknet.com or msteele@naxs.com; CM (for Oceania, Asia) ZL3KR, zl3kr@clear.net.nz
Steamboat Plus - CM KD5DE, kd5de@nwla.com
Steel City - CM KE9WZ, ke9wz@windstream.net
Southwest FL 10-meter Moonshine: w4dnn@arrl.net
Trail Driver - CM N5SCA, n5sca@sbcglobal.net
Twin Cities - CM K0DBK, k0dbk@comcast.net
These addresses are as current as the information you provide. If there are any additions, corrections or deletions to this list please contact the Chapter Manager, K5FBS, Cliff Taylor via email at k5fbs@yahoo.com or via "snail" mail to 22707 Red Mountain Drive, Elmendorf, TX 78112-6034.

7. Chapters

Chapters may be formed to promote the purposes of the 10-10 organization. Chapters should be especially active during periods of minimum sunspot activity.

7.1 Authorization and Qualifications for Chapters

7.1.1. Application: A group which wishes to start a 10-10 chapter must complete a Chapter Affiliation application, which can be obtained from the Chapter Manager.

7.1.2. Membership: US chapters, except for Alaska and Hawaii, must have at least seven (7) members, preferably, but not necessarily, located in the same geographic region permitting ground wave or point-to-point communications, in good standing with 10-10 (paid-up dues), in order to apply for affiliation. Alaska, Hawaii and DX stations must have at least five (5) members in good standing.

7.2. Organization and Responsibilities

7.2.1. Basic organization: A chapter shall have a name and be organized in such a manner as to continually permit the basic purposes of the chapter or 10-10.

7.2.2. Responsible Official: Each chapter shall have at least one responsible official, in good 10-10 standing and usually called the Chapter Head (CH), who will guide the activities of the chapter and insure that the chapter members are continually interested in operating on the 10-10 meter band. The CH, or another chapter member so designated by the CH, shall be the liaison between the chapter and 10-10, usually through the Chapter Relations Committee. If the CH does not continue in good standing, then another member shall be chosen to assume the responsibilities of the CH.

7.2.3. Quarterly Report: The chapter shall submit a quarterly report which will contain the basic information about the chapter and its activities.

7.2.4. Nets: A chapter will hold at least one weekly net on any mode of operation permitted on the 10-meter band. The chapter may hold additional nets on either another mode, another date and time, or frequency. The chapter may apply to the Chapter Relations Committee for permission to suspend operations for up to three (3) months during periods of minimal sunspot activity. During these periods, however, the chapter is responsible for monitoring the 10-meter band and, if propagation permits, resuming net operations.

7.2.5. Other officers: A chapter may elect other officers in addition to the CH if said officers are required in order to fulfill chapter/10-10 goals.

7.3. Chapter Privileges

7.3.1. QSO Parties: Chapters may participate in all 10-10 QSO parties for a chapter score in accordance with published contest rules.

7.3.2. Certificate Program: Chapters may have a certificate program to include, but not limited to, membership certificates. Other certificates available may be in support of an awards program. Fees charged should be based upon the quality of the certificate. The appearance of said certificate should reflect favorably upon the chapter and 10-10. Prior to the initiation of the program, certificates, etc., should be submitted to the Chapter Relations Committee for approval. Fees assessed for certificates, however, may not exceed the actual cost of the program.

7.3.3. Newsletter: The chapter may have a newsletter or communicate to chapter members through another medium. Again, the communication must conform to conditions expressed in section 7.3.2.

7.3.4. Treasury: The chapter may have a treasury and charge dues or raise funds by any lawful means. All funds, however, should be expended in support of chapter/10-10 goals.

7.3.5. Local Activities: A chapter may conduct local activities of benefit to all radio amateurs.

7.4. Termination of Chapter Affiliation: A group's status as an affiliated 10-10 chapter may be terminated for:

- 1) Failure to file at least one quarterly report during the last twelve (12) month period.
- 2) Suspension of net operations for more than three (3) consecutive months.
- 3) Deliberately furnishing incorrect information to 10-10 or to the Chapter Relations Committee.
- 4) Conduct unbecoming amateur radio operators.

Submission of Information:

This column must be in to the editor of the NEWS no later than the first week of the month of March, June, September, and December. So in order to make the deadline and, if you want your chapter information in the current issue, it needs to be in hand by the last day of February, May, August and November. Keep in mind that sometimes the newsletter is delivered a few days into the month rather than being on the 1st, therefore, if you have a special or worksheet that is going to be done during the months of January, April, July, or October, then the information needs to be in to the Chapter Manager in the prior issue.



The summer DX season has been a disappointment for all of us this year. During the month of August 2008, the sun went through its quietest period of no sunspots the entire month. It's been one hundred years nine cycles since the sun has missed 50+ days without any sun spots. The Cycle 23 solar graph has produced a new pattern that is showing up as a very small double bottom. If you look at the graph of Cycle 23, you will see a double peak a few years ago. So it's appropriate that Cycle 23 is now producing a double bottom in 2008! But everyone reading this keeps asking for the sun to start making spots so we can start talking DX with Cycle 24.

I wanted to make a few comments about my friend Steve **N0WY** #68684 who died in late July. We met for the first time in Oakridge, TN at the 10-10 convention in June 1999. We had a few things in common, plus Steve was the new Editor for the 10-10 News and my new boss. When it came to deadlines, he was always understanding. For example, the ARRL Ten Meter Contest is always very close to our December deadline date for articles. I always put the latest DX news about this contest in my article. So there were years that Steve would wait for my article to get finished after the deadline date. But he worked with it and the 10-10 News came out on schedule. So he gets my gold star award for being the best 10-10 Editor I have worked with over the past twenty years. Steve also did a great job in organizing the QSO Party scoring and scoring the results. Steve loved to work the DX as he had submitted for his 55 Countries award in late 2002. I am sure he had a few more countries that never got submitted. Steve will be missed and I will remember the smile he always had for us. Thanks OM. Great job. 73.

Countries Award: The total number of basic certificates issued is 621. I had one basic certificate and six upgrades this past quarter. Please, copy your QSL cards instead of sending the originals to save postage and use the website before you send an application or email any questions to me.

I want to say congratulations to Charlie **W5NMX** #45835 who just submitted for his 10-10 Countries Award and four upgrades all in one mailing. Anyone submitting for this award can always send in more than the basic 25 QSL cards and get credit. It may take a few extra days to get all the details into the 10-10 country award database but it reduces the postage cost and the amount of work is slightly reduced. Charlie submitted the original QSL cards but it is safer to copy the cards to remove the risk of them being lost as they transit the mail system.

Charlie had some nice contacts in the sixty-five QSL cards that he submitted and I did enjoy looking through all the

DX cards. 10-10 follows the same rules that are used by the ARRL DXCC program except we require the swapping of the 10-10 information, etc.

General 10-10 DX reported in the past quarter:

3DA Swaziland. Doc **WB6OJB** #70675, was in Swaziland from September 3-8th using callsign 3DA0JK. Doc was heard on 20 and 40 SSB, worked on 17 by N1API #25468 but nothing yet on 10.

3W Vietnam. Stan **3W9JR/OK1JR** #20103, has left Hanoi and he is now back home. QSL via OK1JN.

C9 Mozambique. Frosty **K5LBU/C91CF** and Bob **K0OK/C91BN** #11984, were with a group of operators from July 16-30th. They used two stations, one for CW and one for SSB. Web site: <http://www.tdxs.net/C9.html>.

F France. Moudar **F5CWU** #71812, was active in the IOTA Contest as TM7C from Noirmoutier Island.

GI Ireland. Declan **EI9HQ** #71019 and four friends, were on Rathlin Island during the IOTA Contest. They operated as GI0MPG.

HS Thailand. Karl **K4YT** #37347, went back to Bangkok, Thailand on July 9th. Karl used HS0ZDY during the IARU HF World Championship July 12-13th.

OZ Denmark. Rene **DL2JRM** #69623 and a friend **Netti DO6XX** were active from July 26th to August 9th.

PJ2 Netherlands Antilles. Goose **W8AV** #25365 was on Curacao for a few days until September 10th. He had trouble with his equipment and did not operate much.

V3 Belize and HK0 San Andres. Dennis **K7BV** #5414, was on Belize as V36M from June 20-26th and San Andres as 5J0M from June 29th to July 8th. Dennis said that band conditions were the poorest seen in years.

VY0 Canada. Bruce **KD6WW/VY0** #13040 and Mike **K9AJ**, operated from Hearn Island from July 25-28th.

VK9X Christmas Island. From July 14-25th, a group of operators including Marq **VK9XWW/CT1BWW** #64689, were on the island but did not operate on ten meters due to poor propagation conditions.

VP5 Turks & Caicos Islands. Joe **W8GEX** #41393, was active as VP5/W8GEX until June 28th.

VP9 Bermuda. Ralph **K9ZO/VP9** #6142, was using Ed's **VP9GE** #3822 QTH, from July 9-16th.

W USA. A group of ops using call N5I were active from Grand Isle, Louisiana from July 25-27th. Bob **N5ET** #20396, Buzz **N5UR** #9466 Max **K5PP** #11849 and Mike **W5ZPA** #17249 made about 2000 contacts.

W USA. Randy **WS4C** #12498 and a friend, were active with their own call sign from Middle Hooper Island, Maryland from June 26-29th.

ZD8 Ascension Island. Bob **VP8LP** #8854 used call ZD8LP starting August 14th and expects to leave about September 14th.

ZF Cayman Islands. Mario **K2ZD** #7826 was active as ZF2ZD, until July 6th. QSL to home call.

Upcoming DX & New 10-10 Activity:

3DA Swaziland. David **GI4FUM** (EI4DJ) #21599, will be operating from Swaziland as 3DA0DJ on October 17-27th. He will be joined by Daniel, ZS6JR to operate as 3DA0JOTA for the annual Jamboree On The Air on October 18-19th.

C6 Bahamas Islands. Ed **K3IXD** #8566, Dallas **W3PP** #37430 and a friend operated all bands as C6APR from July 25-28th on Crooked Island. C6APR will be on in the CQWW SSB contest from October 23-27th and call C6AXD will be used outside the contest and on RTTY.

CT Portugal. Marq **CT1BWW** #64689, will use call CQ4IPY from November 1-7th for the International Polar Year. Web site: <http://cq4ipy.bravehost.com>.

E5 South Cook Islands. Bill **N7OU** #69318, will be operating on CW only from Rarotonga, South Cook as E51NOU from September 15th to October 11th. He will be low power and can only operate during his spare time.

FJ St. Barthelemy. Look for Joe **W8GEX** #41393 and Jim **K0RH** #69471 to be with a team of ops going to St. Barthelemy from October 16-28th. They will be in the CQ World Wide SSB DX Contest. The team now has a Web site: <http://to5dx.homestead.com/index.html>.

FR/G Glorioso Island. The DXpedition scheduled for 2008 has been delayed due to work on the weather station on the island. The present team is Chris **5U5U** #45817 ex. **6W1QV**, Flo **F5CWU** #71812, and six others. The **Glorioso 2008** web site is: <http://glorieuses2008.free.fr>.

G England. Berkin **TA3J** #74303 and Nilay **TA3YJ** #74304, will be on the air from September 10-17th in London, England as M/homecalls. QSL via Nilay TA3YJ.

J6 St. Lucia. Fred **K9VV** #8707, will be on St. Lucia for the CQWW CW November 29-30th. QSL via K5WW.

SV Greece. Paul **DH9VA** #61508, and six Greek friends were to be active from Lemnos Island from September 6-13th. Website at: www.svdxgroup.com.

T8 Palau. Sadayuki **JH1UUT** #32970 will be active as T88DB in the All Asian DX contest on SSB.

V4 St. Kitts. Dave **AH6HY** #33750, will be on St. Kitts as V4/AH6HY from September 26th to October 3rd. He'll be on SSB only. QSL either direct or via the bureau.

VP5 Turks & Caicos Islands. John **N2VW** #31476 and friends will use VP5T during the CQWW DX SSB contest from October 25-26th. Other times VP5/homecall.

YN/H7 Nicaragua. Eric **K9GY** #22330, will be back in Nicaragua in November for the CQWW CW DX Contest. Eric will be using low power and hopefully with a H7 callsign from November 22nd for ten days.

Miscellaneous Items & Notes:

Large QSL site. A collection of 6000 QSL cards are

located at the Les Nouvelles DX's web site. The site has cards from the Ten Most Wanted DXCC Entities, the 58 Deleted DXCC entities, obsolete prefixes, stations from Magrebb from 1947 to 1962, Antarctic bases & TAAF, the various French DXCC island Entities in the Pacific Ocean & the Indian Ocean, pre-1945 countries, French Depts and USA, plus a gallery for cards not accepted by DXCC. Web site at: <http://LesNouvellesdx.fr>.

QSL ROUTES. Patrice #36197, has info going back to 1987 at his Web site: <http://f6gcp.free.fr/qslnfos.htm>. Here's a simple daily report of sunspots & a propagation forecast: <http://www.dxc.com/solar/>.

You can see the solar progress and graphs at the NOAA website: <http://www.sec.noaa.gov/SolarCycle/>.

Solar Forecast: <http://www.sel.noaa.gov/forecast.html>. Information on IRCs/US\$ needed for postage to the USA is at: <http://www.qsl.net/w9ol/ircchart.txt>.

QSL help: <http://files.billnjudy.com/>.

DX Calendar: An interactive DX Calendar based on 425 DX News is available at <http://www.dxwatch.com/>.

Propagation: Propagation continues to be poor this past quarter in the US with few Sporadic E openings observed here in Texas. The last good opening was during the Ten Meter Contest in December 2007.

Expect the daily solar flux to range from **66-89** the next quarter and the monthly flux will stay below 94 until Solar Cycle 24 is firmly established by NOAA. The flux remains in its lowest range with 52 days of NO sunspots as of September 10th. **On September 10th the solar flux was 67 the A index 6 and K index 1** which is about the same as three months ago. X-ray emissions from the sun have not improved and the flux remains at a minimum with a small chance of a storm or flare from the sun.

Expect the best conditions on Sept. 4-7th, Oct. 1-4th, Nov. 1- 4th & 28- 30th, and December 27-30th. Over the next four months, for USA stations, expect a 15% chance of DX in the mornings to Asia, Europe or Africa and a 25% chance into South America or the Pacific in the afternoon. To tell what DX paths are open, use the beacons from **28.175-28.300 (especially 28.200)**.

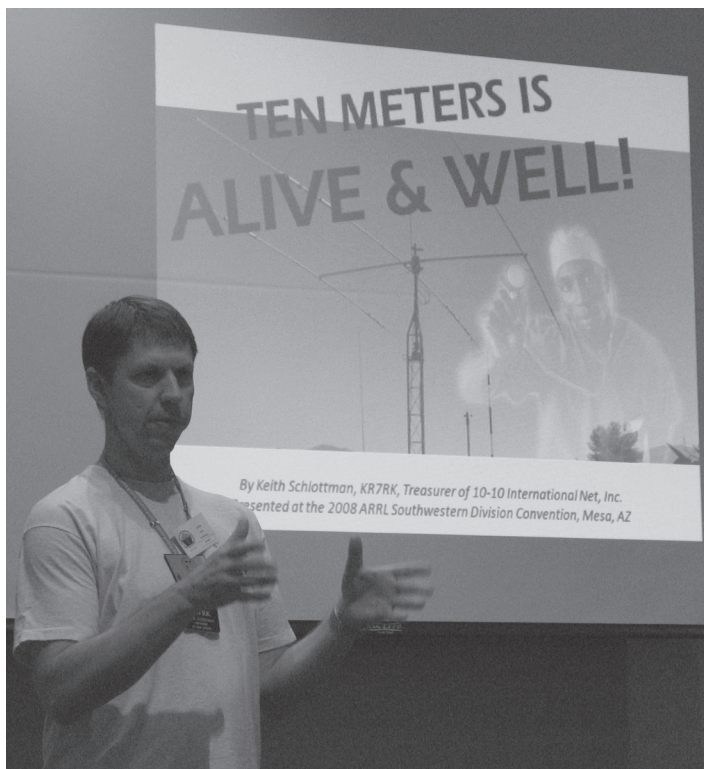
New DX members' June to August 2008: June: 74988 DL6CL, 75015 IZ2AMS, 75019 VE3KKP; July: 75045 VE3VCF; August: 75180 VA3NU, 75242 VE3TU, 75246 VA1SEA, 75250 VE3OX, 75252 VE3CXB, 75270 DG2FFI.

Thanks to the DXNL, The Daily DX by W3UR #25731, QRZ-DX, Lee KH6BZF #8888 & Ohio/Penn DX Bulletins. Send photos/info to Mike Davidson, 3518 Bellefontaine, Houston, TX 77025 USA. Email: **N5MT@aol.com**

DX IS! 73 Mike Davidson N5MT #24949

Copyright © 2008 by N5MT

TEN-TEN AT THE ARRL SOUTHWEST DIVISION CONVENTION



By Keith Schlottman, KR7RK, Treasurer of 10-10 International Net, Inc.
Presented at the 2008 ARRL Southwestern Division Convention, Mesa, AZ

Keith Schlottman, KR7RK, #63324

NEW LIFE MEMBERS

10369	WB7AUJ	David H. Dodd
18704	KC4M	Harry V. Early, Jr.
20337	AL7FI	Rachel L. Runvan
42003	DL3EAY	Klaus Elsebusch
45835	W5NMX	Charlie W. Carpenter
55099	KA1BVV	Richard A. Downe
67311	WA6HNI	Andrew P. Ziros
69904	WV4ED	Edward A. Beatty
69966	KH6DQ	Jackson M. Tsujimura
70807	DK1EAW	Bjorn Olaf Winter
75105	AC6E	Michael J. Myers
75204	K3CB	Owen Wormser
48577	NH6JC	Mitchell I. Oishi

10-10 Has Two Official Daily Nets
28.380 and 28.800
Both Run At 1800z Every Day Except Sunday
Listen And If You Can Hear Us Join IN!!!

Eye Ball QSO In Alaska



Recently while on a cruise tour to Alaska I had the privilege and opportunity to personally meet Lloyd, KL7JGN. We first contacted on October 17, 1980 and several times later but knowing I was going to be in Anchorage I contacted Lloyd and we did meet for a cup of coffee and reminisce old times on August 7, 2008. Almost 28 years from first contact to eye ball. Lloyd is on the left in the photo.

Bill Livingston, KB9MJ, #22313

Introducing a NEW EVENT!!!

Meet the Volunteers

A year-long event to find and make contact with all of the people

Who devote time to keep 10-10 an active organization!

The goal? Make contact with each of the following volunteers during 2008.

AJ5ZX Award-WAC	KM5EH Award-OM/XYL
G4BLH Award-GB Counties	KQ4PK Net Control
K0DBK Director-Awards Mgr / Counties	KR7RK Treasurer
K0NO Committee Member	KS4XI Net Control
K1IEQ Director - Planning	KZ3T Award-Bar 100-900/VP Lucky 13
K2BIL Committee Member	N0KDB SK Manager
K4QHH Net Control	N0WY Director
K5CC Director - Web/Call Trustee	N3TGB Award-1000+
K5ERJ Award-Mobile	N5MT Award-Countries
K5FBS Director - Chapter Coord	N6ELK Net Control
K6PZE Net Control	N6OPR Director - Net Control Manager
N7AZ Secretary	N7PVL Net Control
N0TW QSL Bureau Manager	NN1J Award - WPX
K5OVO Historian	NS2M Net Control
KA6RFB Net Control	VE7ACM Committee Member
KA9EKG Net Control	VE9KM Director - QSO Parties
KB3KTR Net Control	W0HIK Award - VP/VP WAS
KB7ARN Committee Member	W1KT Committee Member
KB9ARA Committee	W2BOC Net Control
KB9MJ Net Control	W4ZYD Committee Member
KC7OC Net Control	W6YLJ Past President
KC8IM Net Control	W9HT Committee Member
KD4BVG Committee	W9HZC Webmaster
KD5DE Award-Digital	WA2SUH Vice President/Scholarship Mgr
KE1HG Committee Member	WA4EEZ Director - Relations
KE3VV General Council	WA6POZ President / Data Manager
KE6OIO Net Control	WB0CON Award-WAS
K7PRZ Committee Member	WB6OJB Net Control
KI0SR Editor	WB7X Committee
KI6OY Award-CW	WD8JKV Committee Member
K7QXG QSL Bureau Manager	

RULES FOR THIS EVENT MAY BE FOUND ON PAGE 28 OF THIS PUBLICATION

Silent Keys

Compiled and listed by
Ruth Bartholomew, N0KDB #48715



It is with sorrow that we note the following Ten-Ten members who are now Silent Keys. We extend our sincere condolences to the families and friends of those SK members whose calls and Ten-Ten numbers will forever be kept in the records of the Ten-Ten Net.

000074	WA6LWE	Madeleine T. Mason	Temple City, CA
000615	W1HFC	Charles A. Link	Cranston, RI
000934	W8JSM	Clifford Ray Hackney	Cincinnati, OH
001001	WA0FGV	Arthur M. Mower	Hot Springs, SD
001429	W9MLN	George D. Cammack Jr.	Scottsville, KY
002653	W1MJA	Donald E. Pope	Billerica, MA
002755	AA5XE	Dale N. Richardson Jr.	Kerrville, TX
005716	W8CNL	Raymond H. McClure	North Augusta, SC
006003	W7AFC	William O. Grieve	Benson, AZ
006501	W7PMN	Robert K. Milligan	Columbus, MT
007336	K5YIN	Irvin L. Kelly Jr.	Biloxi, MS
007481	K1YGY	Thomas A. OConnell	East Greenwich, RI
007939	KB6KQ	Noeman W. Pedersen	Kelso, WA
008761	K8KSN	James F. Foote	Uhrichsville, OH
009179	KC4QO	Robert L. Green	Panama City, FL
009343	W6YE	Thomas L. Behrens	San Francisco, CA
010380	W7IV	Harry R. Hyder	Tempe, AZ
013153	W3DMM	Donald E. Yeich	Reading, PA
014602	W8STX	John P. Haungs	Cincinnati, OH
016554	N2HS	Leonard J. Cataldi	Kendall, NY
016721	WA3UJE	Jame A. Bortner	Chestertown, MD
016927	WA9SLT	Robert A. Kirkpatrick	Streamwood, IL
017316	WB6FOA	Edith L. Nikkel	Pleasant Hill, CA
017965	K6AAG	Robert C. Wohosky	Hesperia, CA
020309	W7KOI	Eadl P. Shobe	Elko, NV
023293	WD6BKY	John S. Strom	Victorville, CA
023471	ZL1KQ	Jack Small	Auckland, NZ
023813	WB0YPK	Robert L. Witthar	Jefferson City, MO
024295	K9PDZ	Harris A. Anderson	Rockford, IL
025419	KA1IQ	Arthur B. Palazzini Jr.	Torrington, CT
026296	W4LLF	James O. Dickinson	Richmond, VA
026905	N7WF	Jack W. Greenwood	Wolf Point, MT
029324	WA2ZBN	Gerard J. Earls	Malverne, NY
030652	W6AGZ	Arch D. McGregor	Bell Canyon, CA

033931	K1AMG	Anthony J. Sidla	Cumberland, RI
037687	W6QJB	Gordon B. Meadows	Santa Rosa, CA
038676	KB1GW	Glenn P. Swanson	North Granby, CT
040168	N6LHF	Norman C. McNamara	El Monte, CA
041915	K2EWA	Gerald Wagman	E Brunswick, NJ
043129	N5JLA	Jacob E. Oakes Jr.	Richardson, TX
044210	AG4DO	Richard E. Lucas	Roanoke, VA
044292	N4NFK	Aubrey C. Hart Sr.	Quitman, GA
044436	W9CZS	Elmer C. Schoch	Peoria, IL
044577	KA8YNB	Charles E. Kissece	Lansing, MI
044673	N6QNL	Tim Hicks	San Diego, CA
044997	N7GHD	Charles J. Lamb	Redmond, WA
047123	N6EMI	John E. Moore	La Palma, CA
048321	N2HOH	William C. Wilkinson	Princeton, NJ
048517	N6OPY	Edward E. Kemp	Firebaugh, CA
049221	N0IQS	John L. Prall	Hot Springs, SD
050679	W9KES	Kenneth E. Slater	Porter, IN
052411	KA1STU	Gorden Bennett	Rochester, NH
052453	AA1BL	Gordon W. Gormley	Westminster, MA
052473	KA1TUZ	Richard C. Doherty	North Andover, MA
052536	W4XAA	Thomas S. Kneitel	Deland, FL
052891	WA8VUV	William K. Taylor	Leavittsburg, OH
052964	N0GGI	Wayne E. Paulson	Omaha, NE
053030	KN4TZ	George S. Ruby	Hendersonville, NC
053739	WB6IIV	Francis Roque	Eden, NC
054299	VE3GHN	Leonard Dodds	Scarborough ON, CAN
054698	N7IVM	William E. Bennrtt	Olympia, WA
057608	W5QVS	A. Jay Ingram	Midwest City, pk
057778	W8KVU	William R. Moore	Hamilton, OH
058373	WB4GM	Eugene L. McGlaughn	Gadsden, AL
060184	WA1CBP	Halstead N. Colby Jr.	Bow, NH
061215	W9YE	Robert D. Martin	Lafayette, IN
062349	N0SLK	John Gavagan	State Center, IA
062597	N7LWQ	Everett M. Marriott Jr.	Astoria, OR
065372	K9RCN	Ronald R. Kaiser	Chicago, IL
066125	KD4BOY	Glenn J. Winslow	Birmingham, AL
067262	W4SEC	William Y. Axson	Citra, FL
068152	N3UK	Thomas R. Hollifield	Pottstown, PA
068975	W1FPF	Richard A. Clymer	Vero Beach, FL
069706	K4REA	Russell E. Ashley	Fort Mill, SC
070566	N1SA	Steve Ames	Southington, CT
072631	K4OH	F. M. Wood	Seneca, SC
072816	AA9HL	David A. Geschke	Racine, WI
072844	N9ANA	Donald E. Dallmann	LaGrange, IL
073091	K0RFL	Raymond F. Lund	McPherson, KS
073822	W4WTA	Carroll L. Norton	Martinez, GA

YOU HAVE TO MAKE CONTACTS TO GET RESULTS

QSL Card Etiquette

By Al Kaiser, N1API, #25468

With almost 600 contacts last weekend I am now starting to see the QSLs flow in. With respect to all, here is a quick primer on QSL card etiquette to make the job of answering QSLs easier for all involved. These thoughts are mine and mine alone, and not from any printed instructions but just my observations on what I see in answering QSLs.

1. I'll answer your QSL if it comes via the US mail. I also upload to Logbook of the world. (Logbook has not happened yet it will in a week or so). QSLs with an SASE get sent back in the SASE. QSLs without an SASE or just in an envelope get sent back as a post card.

2 No bureau cards please. I do keep envelopes at the W1 incoming bureau, but that is because I do a lot of contesting and find the the contest stations do a mass QSL of all their contacts. With all the countries in the world worked, I'm concentrating on bands and mode and QSL individually per the worked station's instructions and collect via LOTW.

3. Follow the instruction of the station you worked for QSL. If he says no incoming QSL, then don't waste your postage. I know hams that have been on the air for 40 years and have never sent a QSL. If he says bureau only do so. If he says direct only do so. Some may not care how they get the QSL, I've always joked that when I want someone to QSL me I don't care if it comes via a rock through my window as long as I get the QSL.

4. Make sure the information on the QSL is complete and accurate. Keep the log in UTC and write the QSL in UTC time. Your or his local time is no good when you QSLing a station you worked in Beijing, (China). Make sure the contact information is complete, Fill out HIS call, date worked, time in UTC, Band, and mode and signal report. For most contests everyone is S9 though you can always use the report you saw or gave. You can put a personal note on it, if not at least sign 73 and your name or call.

5. Your card should have your name, address and CALL printed on it, you can also have your email address if necessary but this is risky because you don't know if the person is collecting names for spam or not. NEVER put your phone number on your card unless it is a commercial address. (You will see a crossed out phone number on my QSL, that number was disconnected 15 years ago and was not supposed to be on the card, I did not notice it when I approved the proof). For 10-10 write or have the 10-10 number on the card. Also your county should be on the card. You can have your grid square, the VHFers want that. Also if you have a VP number for 10-10 put that or write it on the card. (The part I forget the most).

6. Postage: The biggest controversy in QSLing. When sending "direct" always include return postage. If it's for a US station put your card in a long envelope properly addressed. Inside place your QSL card and an envelope addressed to YOU and YOUR return address. If there is a postage problem you still want the card to come back to you though you will probably have to pay for another stamp or extra postage. PUT THE PROPER RETURN POSTAGE ON THE ENVELOPE. This is called an SASE. One word of caution here. If you put a LONG envelope inside FOLD IT.

My battery operated letter opener cut the flap off a return envelope because it was as tall as the envelope it came in.

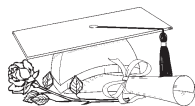
7. When sending direct to a DX stations follow the same rules, but rather than an SASE use an SAE, (Self Addressed Envelope). Here you will want to include a FOLDED large envelope as many of the DX cards will not fit a standard US letter envelope. For postage and for the countries that accept them you can send, "Green Stamps" that is US currency.

\$1.00 used to be sufficient for most countries but now you will need \$ 2.00 for most, some are more than that, usually if you work a DX stations he will tell you what he needs, If he says (5 or 10 bucks forget it). Unless it is a DXpedition and you are making a donation, I believe that \$ 3.00 is the most it should cost for a direct QSL. You are working in even dollars, it may cost them \$1.75, but hey you need the QSL so you gave him an extra quarter. Put proper outgoing postage on the envelope. THE PO will not forward mail out of the US with improper postage, you will get it back for extra postage. 1 oz should be enough for 2 or 2 cards, but if you are sending more, or extras like a letter or small trinket as a memento it's best to take it the PO and have it weighed first. They will also tell you if it is acceptable or not. An odd or bulky letter with metal or coins inside may not be acceptable now. (9-11). ALSO and IMPORTANT, if the stations says NO US MONEY DON'T send it. I do not know if it is still true, but there were some countries that would arrest and jail hams receiving foreign currency in the mail.

8. For DX you can also send IRC, International Reply Coupons. 1 coupon is good for 1 unit of return postage. I won't go into those since I have not used them in years and the rules have changed in using them. GOOGLE International Reply Coupons for more info. IF you can get them you can also send THEIR mint, (new) stamps that they can put on the envelope. You need to know their postage system though and how many stamps it's going to take to get your card(s) back to you. I would let them affix the stamps. Don't send the appropriate amount in US stamps unless they ask for them. They probably can't convert them to their stamps unless they are SASEing US stations or are stamp collectors. (Many are and would be happy to accept nice US commemorative stamps but ask first.)

Well that is my quick primer of QSLs. Hope that the information is helpful to the newcomers. Feel free to add to this if necessary, and all flames to me direct! (VIA email not snail-mail).

10-10 SCHOLARSHIP FOUNDATION SUPPORTERS



We encourage all of our members to support the 10-10 Scholarship Foundation. Our goal for the 2008-2009 year is to fund four \$1500 scholarships entirely through member donations outside the dues structure. At the 2001 Annual Meeting, the Board of Directors of the 10-10 International Net accepted the Articles of Incorporation and Bylaws of the 10-10 International Net Scholarship Foundation. With that action the 10-10 International Net Scholarship Foundation was created. The 10-10 Scholarship Foundation is a qualified 501(c)(3) tax exempt organization and contributions are tax deductible. If you have an employer matching program, please let us know.

You may be interested in the history of the scholarship program. From 1990 to 1995 10-10 awarded two \$750.00 scholarship each year. In 1996 and 1997 three \$1000.00 scholarships were given out. The number of \$1000.00 scholarships was raised to four for 1998 and 1999. From 2000 to 2006 the number was increased to five, and six for 2007. Recognizing the increasingly high cost of a college education, the scholarships have been increased to \$1500.00 for 2008 and 2009.

Why not consider a donation as a Chapter or an individual donation in memory of a fellow ham or loved one? During this quarter, donations were received in memory of Steve Rasmussen, N0WY, #68684,, from Terry Webb, N0TW, #36547 and Sheila Schwartz, KE6GFI, #72985.

If you haven't donated before, we want you to know that all donations, no matter how small, are appreciated and they do add up. At the time you make a donation to your charity, why not write a check to the 10-10 Scholarship Foundation? If you make a donation of \$10.00 or more you will receive a special 10-10 pin for 2008. For \$15.00, we will throw in the 2007 pin while supplies last.

The members listed below became 10-10 Scholarship Foundation Supporters during the months of June, July, and August, and we appreciate their support.

Platinum

(\$1000.00 or more)

W5XX

David Topp

67596

Gold

(\$500.00 to \$999.00)

None

WA2SUH
K1EQA
W6YLJ
K1IEQ
N0TW
N6YE
K0DBK
KR7RK
VE9KM
KE6GFI

WB2SPP
KG5RJ
WA2EJO
WA7ONE
W2BLH
KD5DE
W5JYJ
KE5WO
W5EMR
W4JAG
KK0SD
K5CC
N3HTA
KG5WO
N5OTI
WB5HAM
N5VAV
K2MSB
AD6PV
KF0X
N3NOP
WA6GVO
K5KMR
WA2WUH
KB9ILV
W4KRN
W2KFV
N0QE
N1BCL
W0RO

Silver

(\$100.00 to \$499.99)

Larry Berger	00407
Jay Jones, III	00894
Chuck Imsande	19636
Kenneth Harmon	31363
Terry Webb	36547
Kenneth King	36666
Brad Kimble	55192
Keith Schlottman	63324
Rob Ireland	69811
Sheila Schwartz	72985
AC Awards Company	

Bronze

(Up to \$99.00)

John Cippolletti	20155
Gregory Hall	26626
Robert Berger	27615
Ronald McCombs	29018
Abraham Berger	33333
Mel Sojka	33513
Robert Lobaugh, Jr.	34622
Harvey Jones	38074
Eugene Reed, III	40000
James Griffin	42577
Gary Mayfield	42600
Jack Moore	50708
James Ridgley	52396
Terry Johnson	53270
Merryl May	53295
Evan Newlon	54868
Jeffrey Ritter	59692
Matthew Berger	60606
Harry Ley	62068
Randall Malick	62336
Robert Fulton, Jr.	63098
Jerry Dean	63197
Ken Rainey	64388
James Denham	65581
John Kara	66414
Karen Russo	66628
James Mezey	68000
Scott Mentzer	68075
James Dunn	71101
Daniel Scott	71198

KD5HIP	John Zumbro	71476
KG4GVV	Donald Benson	71868
W9HT	Joshua Long	72151
KC5ILO	Thomas Trissell	72239
N9XHN	David McMullen	72762
KD5QHV	Bernard Krasowski	73465
KS5R	Kenneth Wood	73537
WD9EWK	Patrick Stoddard	73705
WB0AEA	Kurt Bauer	73866
KB9ASC	Henry Schumacher	74218
KE5BQK	Linda Krasowski	74379
KC9CSH	Michael Ramm	74386
WD4LVW	Michael Fulcher	74665
NG8A	Thomas McGill, Sr.	74744
W0WMS	Walter Schreiner	74756
KX8C	James Sens	74781
WD5CAE	Melvin Simon	74785
W8NCN	Neal Niklas	74804
KF4UTH	Thomas Bennett,III	75001
W0DUG	Douglas Kreynest	75038
AB2ZI	Kevin Morgan	75108
K2WOP	Curtis Bisesi	75214
KC0WMN	Raymond Smity	75232
KC7DUU	Jacques Koeckes	
KB2YMG	Michael Billy	
WB4KKV	John Sheats	
AF6DJ	John Neves	
KE7QFN	James Carter,III	
N7XJ	Robert Armstrong	

10-10 Scholarship Applicant Information

This year the 10-10 International Net, through our non-profit corporation, the 10-10 Scholarship Foundation, funds four \$1500.00 scholarships, which are administered on its behalf by the Foundation for Amateur Radio (FAR).

Dianne Zimmerman, AA3OF, Chairman of FAR's Scholarship Committee, announced the four recent winners in the October 2008 10-10 International News. Over the past 21 years, 10-10 has funded 75 scholarships valued at \$73000.00.

Applicants must be licensed radio amateurs. There is no restriction on the course of study, but applicants must intend to seek at least an Associate degree from a college or university. Non U.S. amateurs and those seeking graduate degrees are eligible. Foreign members should be aware that students who study outside the United States are also eligible to receive a 10-10 Scholarship.

It is suggested that every 10-10 member encourage qualified college bound radio amateurs to take advantage of this opportunity by requesting an application package by letter or QSL card prior to April 30 of each year from the:

**Foundation for Amateur Radio
P.O. Box 831
Riverdale, MD 20738**

Applicants, except those who are active 10-10 members must provide an endorsement from a current active 10-10 member (one whose dues are current). Completed applications must be received by FAR prior to June 1 of each year.

You too can become a 10-10 Scholarship Foundation Supporter, by making your check payable to the 10-10 Scholarship Foundation. Please send to:

**10-10 International Net Scholarship
Manager
Larry Berger, WA2SUH
9 Nancy Boulevard
Merrick, NY 11566-3118**

**SUPPORT
TEN-TEN SCHOLARSHIP
FOUNDATION
WITH A DONATION TODAY
IT'S TAX DEDUCTIBLE**



NET NEWS

Bob Farrow N6OPR #45715

Hello 10-10 Members Where Ever You Are

We are calling the 10-10 daily nets and not having much success with anything but local check ins. I can not say band conditions have been helpful with only a few short openings. Here in the Los Angeles area we have several local check ins on Monday, Wednesday, Thursday and Saturday with a few checking in from the North West. Any time we get a "back East" check in we put them to work as a relay station.

I try to contact each net every day. I have managed to contact a few nets. This quarter we used all four relief

Net Controls (NCS) to call a few nets. This gives us a day off for vacation or what ever.

On the first Thursday of the month the locals have a lunch and there are up to 20-25 attending. We wish to extend an invitation to any out of town visitor who may be in the area. Visitors are always welcome to the lunch. Give me a call and I will set things up.

I am writing this after the Summer QSO party and we had a great opening on Saturday. However the band shut down on the West coast Sunday. I am looking forward to the 10-10 QSO party in October. This is my favorite contest next to the ARRL sweepstakes. There are a lot of new 10-10 numbers out there; I picked up several in the QSO party and also filled out a few applications.

Keep the faith things can only get better.
Thanks for stopping by

Bob Farrow, N6OPR #45715

QUARTERLY NET REPORT

28.380			28.800			28.380			28.800			28.380			28.800		
MONDAY NETS						WEDNESDAY NETS						FRIDAY NETS					
DATE	TOTAL	w/o 10x#	DATE	TOTAL	w/o 10x#	DATE	TOTAL	w/o 10x#	DATE	TOTAL	w/o 10x#	DATE	TOTAL	w/o 10x#	DATE	TOTAL	w/o 10x#
04-07	1	0	04-07	19	1	04-02	8	1	04-02	8	1	04-04	1	0	04-04	10	2
04-14	1	0	04-14	15	0	04-09	2	0	04-09	14	1	04-11	3	0	04-11	7	0
04-21	1	0	04-21	15	0	04-16	2	0	04-16	10	0	04-18	1	0	04-18	9	1
04-28	1	0	04-28	17	0	04-23	2	0	04-23	15	0	04-25	1	0	04-25	6	0
05-05	1	0	05-05	19	1	04-30	2	0	04-30	17	0	05-02	1	0	05-02	7	1
05-12	1	0	05-12	18	1	05-07	1	0	05-07	9	0	05-09	3	0	05-09	6	0
05-19	1	0	05-19	20	2	05-14	1	0	05-14	13	0	05-16	15	1	05-16	11	0
05-26	1	0	05-26	18	1	05-21	1	0	05-21	21	0	05-23	7	0	05-23	10	0
06-02	1	0	06-02	18	0	05-28	2	0	05-28	13	0	05-30	14	2	05-30	4	1
06-09	1	0	06-09	21	0	06-04	17	1	06-04	18	0	06-06	4	0	06-06	8	0
06-16	3	0	06-16	15	0	06-11	1	0	06-11	13	0	06-13	9	2	06-13	6	1
06-23	1	0	06-23	20	0	06-18	2	0	06-18	16	0	06-20	3	0	06-20	12	0
06-30	1	0	06-30	12	0	06-25	1	0	06-25	8	0	06-27	19	1	06-27	7	1
TUESDAY NETS						THURSDAY NETS						SATURDAY NETS					
04-01	2	0	04-01	1	0	04-03	16	1	04-03	5	0	04-05	1	0	04-05	10	0
04-08	2	0	04-08	1	0	04-10	13	0	04-10	9	0	04-12	1	0	04-12	15	1
04-15	2	0	04-15	1	0	04-17	16	0	04-17	9	0	04-19	1	0	04-19	15	1
04-22	3	0	04-22	1	0	04-24	15	0	04-24	14	0	04-26	1	0	04-26	8	0
04-29	2	0	04-29	2	0	05-01	20	1	05-01	2	0	05-03	1	0	05-03	12	0
05-06	2	0	05-06	2	0	05-08	12	0	05-08	2	0	05-10	1	0	05-10	12	0
05-13	2	0	05-13	3	0	05-15	19	0	05-15	3	0	05-17	16	6	05-17	10	0
05-20	2	0	05-20	3	0	05-22	16	0	05-22	2	0	05-24	2	0	05-24	19	0
05-27	2	0	05-27	1	0	05-29	16	0	05-29	2	0	05-31	1	0	05-31	10	0
06-03	9	0	06-03	7	0	06-05	32	2	06-05	6	1	06-07	3	2	06-07	17	0
06-10	3	0	06-10	4	0	06-12	21	2	06-12	3	0	06-14	1	0	06-14	6	0
06-17	4	0	06-17	3	0	06-19	22	2	06-22	7	1	06-21	7	0	06-21	12	0
06-24	19	0	06-24	15	0	06-26	16	0	06-26	3	0	06-28	1	0	06-28	8	0

TEN-TEN AWARDS

To apply for any 10-10 Award, paid-up membership is mandatory. You are not required to send in proof as the Awards Manager has the current membership database. All contacts made for any award must be legal 10-10 contacts (a full exchange of Call, Name, QTH and 10-10 number from BOTH members). An application listing the rules for each award is available from the appropriate Awards Manager listed at the end of the award listings. Please send your request with a #10 (business size) envelope, self addressed and stamped with one unit of first class postage (or enclose one IRC for GB Award), to the Award Manager for the Award you are interested in obtaining. Please no phone calls to Award Managers for an application or list of rules. Contact requirements and rules for all Awards are available on the 10-10 website - www.ten-ten.org

Top Ten Honor Roll

#	CNTCTS	CALL	10-10#
01	24600	WA5JDU	03017
02	11600	K5GAY	11825
03	11500	K0PV	09902
04	10800	NS4M	41176
05	10000	K6PZE	01341
06	09500	N1API	25468
07	09300	N5DAS	35877
08	08600	AC6FU	10937
09	08400	KF7PU	30021
10	08100	W3FGU	16728

Top Ten CLUBS

#	CNTCTS	CALL	10-10#
01	09200	WD0SFT	37933
02	04400	K6MQ	71487
03	01100	NM5MD	72385

1000+ BAR

#	CALL	10-10#
1558	WA4TC	61819

VP AWARD

#	CALL	10-10#
3312	K4SCR	74331
3313	KD4BVG	64773
3314	KF4WKY	70191
3315	Ku4XO	68613
3316	K4JPC	74584
3317	W5DJT	74798

OM/XYL AWARD

#	Basic Teams	10-10#
482	DL5HCN	69620
483	DL5HAN	69621
484	DL6DK	39944
485	DL8YBM	36109

#	25 Teams	10-10#
133	DL8YBM	36109

#	50 Teams	10-10#
68	DH1PAL	69212
69	DF3TE	69610
70	DL8YBM	36109

#	75 Teams	10-10#
28	DL8YBM	36109

#	100 Teams	10-10#
18	DL8YBM	36109

DX AWARD

#	Basic Countries	10-10#
621	W5NMX	45835

#	35 Countries	10-10#
359	W5NMX	45835

#	45 Countries	10-10#
255	W5NMX	45835

#	55 Countries	10-10#
184	W5NMX	45835

#	65 Countries	10-10#
133	W5NMX	45835

#	105 Countries	10-10#
039	W5GVP	11572

#	110 Countries	10-10#
035	W5GVP	11572

DIGITAL AWARDS

Basic Award 25 Contacts

#	CALL	10-10#
088	N3DCJ	74876
089	KB9MJ	22313
090	KR7RK	63324
091	AG0A	74905
092	KT4WV	68547
093	N0EOP	31033

50 Contacts

#	CALL	10-10#
043	N9JLY	55941
044	N3DCJ	74876
045	W4ZYD	69769
046	N7YG	65084
047	KB5UNX	64337

75 Contacts

#	CALL	10-10#
027	KU4XO	68613
028	WD5EDR	23693
029	W5VRX	69779
030	K4JPC	74584
031	W5VRX	69779
032	K4JPC	74584
033	N9JLY	55941
034	W8HL	56609
035	W0RTV	13962
036	KB5UNX	64337

100 Contacts

#	CALL	10-10#
022	N9JLY	55941
023	N0WY	68684
024	KB5UNX	64337

300 Contacts

#	CALL	10-10#
003	KB9NZX	68576

TEN-TEN AWARDS

To apply for any 10-10 Award, paid-up membership is mandatory. You are not required to send in proof as the Awards Manager has the current membership database. All contacts made for any award must be legal 10-10 contacts (a full exchange of Call, Name, QTH and 10-10 number from BOTH members). An application listing the rules for each award is available from the appropriate Awards Manager listed at the end of the award listings. Please send your request with a #10 (business size) envelope, self addressed and stamped with one unit of first class postage (or enclose one IRC for GB Award), to the Award Manager for the Award you are interested in obtaining. Please no phone calls to Award Managers for an application or list of rules. Contact requirements and rules for all Awards are available on the 10-10 website - www.ten-ten.org

COUNTY AWARDS			#	CALL	10-10#	MOBILE AWARD		
Basic 100 Countries				600 Counties		Basic Award		
#	CALL	10-10#				#	CALL	10-10#
522	W5NMX	45835	100	KC4TVZ	60783	146	DL8YBM	36109
523	KC4TVZ	60783	101	W5NMX	45835			
524	KD4BVG	64773		700 Counties		72	DL8YBM	36109
			75	W5NMX	45835			
	200 Countries			800 Counties		51	DL8YBM	36109
323	W5NMX	45835	55	W5NMX	45835			
324	KC4TVZ	60783	56	W0RTV	13962			
325	KD4BVG	64773		900 Counties		43	DL8YBM	36109
	300 Counties		4	K5FBS	55192			
214	KC4TVZ	60783						
215	KD4BVG	64773						
216	W5NMX	45835						
	400 Counties			VP AWARDS				
162	KC4TVZ	60783		VP 100				
163	W5NMX	45835	#	CALL	10-10#			
164	KD4BVG	64773	547	W5NMX	45835			
	500 Counties			VP 200				
136	KC4TVZ	60783	314	W5NMX	45835			
137	W5NMX	45835		VP 1100				
			11	K5FBS	48461			

CW AWARDS
No awards issued this quarter

WAS AWARD
No awards issued this quarter

WPX AWARD
No awards issued this quarter

WAC AWARDS
No awards issued this quarter

Lucky 13 Awards
No awards issued this quarter

GB counties awards
No awards issued this quarter

10-10 Has Two Official Daily Nets
28.380 and 28.800
Both Run At 1800z Every Day Except Sunday
Listen And If You Can Hear Us Join IN!!!

TEN-TEN QSO PARTY RESULTS

SUMMER
PHONE

August 2-3, 2008

TOP TEN

CALL	10-10#	CNTCTS	PTS
01 N2EOC	37549	696/531	1923
02 KC4TVZ	60783	422/364	1208
03 K4JPC	74584	414/357	1185
04 W5DJT	74798	426/310	1162
05 KD4BVG	64773	390/322	1102
06 K0RH	69471	406/264	1076
07 AF2K	33388	381/217	0979
08 N1API	25468	376/204	0956
09 NA9A	31121	328/220	0876
10 N4EDX	74943	309/216	0834

CALL AREA 0

CALL	10-10#	CNTCTS	PTS
K0RH	69471	406/264	1076
WB0VBW	44376	193/079	0465
WA6POZ	21274	182/079	0443
AG0A	74905	127/039	0293
W0RO	71198	116/035	0267
N0EOP	31033	102/023	0227
N0LD	68878	085/025	0195
N0WM	02724	083/008	0174
KB0ARZ	48754	072/006	0150
W0RTV	13962	066/005	0137
WB0GGO	03735	053/006	0112
N4BM	19302	034/004	0072
KA0EIC	47285	034/002	0070
KC0ZSM	75034	032/005	0069
KC0QIE	74857	033/001	0067
KA0HZP	31562	031/000	0062
W0FN	55204	012/001	0025
KR0I	12001	010/000	0020
KB0QCR	69096	003/000	0006

CALL AREA 1

CALL	10-10#	CNTCTS	PTS
N1API	25468	376/294	0956
KB1LKB	74625	226/075	0527
K1PU	33916	177/114	0468
KB1PAJ	74723	088/036	0212
k1IEQ	31363	094/014	0202
KB3GWX	74600	084/012	0180

AE1T	43035	054/030	0138
K1WVO	74597	040/008	0088
W1DMM	52478	029/002	0060
N1YKH	70147	025/010	0060
W1DYJ	65485	028/002	0058
N1DO	63993	021/002	0044
WA1EBJ	20497	018/002	0038
KB1TX	21231	016/002	0034
W1SIX	35346	008/000	0016

CALL AREA 2

CALL	10-10#	CNTCTS	PTS
N2EOC	37549	696/531	1923
AF2K	33388	381/217	0979
WA2SUH	00407	140/072	0352
K2TV	36337	122/053	0297
NA2M	05439	102/025	0229
W2WP	75016	072/043	0187
WC2Z	75014	068/013	0149
K2CVG	72665	047/007	0101
WA2HMM	40510	045/004	0094
W2IUC	07860	017/001	0035
KC2AWX	75032	011/002	0024

CALL AREA 3

CALL	10-10#	CNTCTS	PTS
W3ADC	74453	293/148	0734
KB3NXT	74741	115/042	0272
N3TGB	68129	115/033	0263
K1UZH	70409	090/031	0211
KA3WWG	56860	071/003	0145
NS2M	72143	057/016	0130
W3PWG	01538	044/005	0093
N3TSV	68156	034/006	0074
KB3ORR	74883	019/002	0040
KA3MTT	73110	018/000	0036
WB3AXP	14464	014/001	0029
WA3IJC	74094	013/002	0028
NA3H	30502	008/003	0019
KF3BN	39524	006/000	0012
WA3JXW	04377	004/000	0008
WB3ABH	13155	002/000	0004

CALL AREA 4

CALL	10-10#	CNTCTS	PTS
KC4TVZ	60783	422/364	1208
K4JPC	74584	414/357	1185
KD4BVG	64773	390/322	1102
N4EDX	74943	309/216	0834

N0TW	36547	314/204	0832
KU4XO	68613	226/132	0584
N4TL	13614	188/112	0488
KJ4RV	37776	103/060	0266
K4SHF	73837	115/035	0265
KU4W	20986	099/060	0258
K4RRF	49979	105/042	0252
K4QHH	26040	116/016	0248
WR4C	74779	093/033	0219
K04OL	67730	087/044	0218
KC7OC	67668	096/020	0212
KR4OE	62657	072/054	0198
WB5WAJ	26676	082/029	0193
WA4HT	72053	078/034	0190
WD4GEO	71574	081/026	0188
N4ANV	18712	081/026	-188
N4ERM	34524	066/031	0163
K4BAI	45389	058/031	0147
KZ3T	41015	066/004	0136
KF6JG	27197	051/030	0132
AD4RX	67754	062/001	0125
KE4HW	32054	049/022	0120
WA4JA	72743	050/007	0107
WJ5O	37215	049/008	0106
N4EWG	29730	041/014	0096
WA4WHV	60888	044/008	0096
NC4MI	41896	040/011	0091
N4ZCG	56067	033/018	0084
KD4TDI	74663	042/000	0084
WV4ED	69904	034/007	0075
WD4EWB	18760	037/000	0074
W9EAO	74897	036/000	0072
N2EGO	37582	030/005	0065
KB4LWT	74207	030/005	0065
N4LZ	30439	032/000	0064
KB4WC	46140	031/001	0063
W4DUK	59737	031/000	0062
KI4HPX	74590	028/002	0058
W4GFY	03577	029/000	0058
K4ML	46474	027/001	0055
WA4EEZ	15675	026/001	0053
KK4TB	18813	026/000	0052
W4ZYD	68769	026/000	0052
KD5HIP	71476	025/002	0052
KK3Q	26039	023/001	0047
KG8VT	74468	021/001	0043
KC4JAN	56060	019/005	0043

AWARD MANAGERS

BAR 100-900...	Dan Morris, KZ3T #41015	131 Valencia Ln., Statesville, NC 28625	()	dbm7294mo@roadrunner.com
Bar 1000+	Doris Slye, N3TGB #68129	708 Doages Dr., Millersville, MD 21108-2131	(410) 923-2811	n3tgb@aol.com
VP Bar	Carl Fisher, W0HIK #40678	5 Angelina Dr., Augusta, KS 67010-2262	(316) 775-5900	wzerohik@aol.com
VP WAS	Carl Fisher, W0HIK #40678	5 Angelina Dr., Augusta, KS 67010-2262	(316) 775-5900	wzerohik@aol.com
VP Lucky 13	Dan Morris KZ3T #41015	131 Valencia Ln., Statesville, NC	(828) 728-5049	dbm72941mo@roadrunner.com
WAC	Randy Camron, AJ5ZX #71083	7641 Gladiola, San Angelo, TX	(325) 659-2802	AJ5ZX@suddenlink.net
Counties	Brad Kimble, K0DBK #55192	3855 66th St. E., Iver Grove Hts, MN 55076-2222	(651) 450-1173	k0dbk@comcast.net
Countries	Mike Davidson, N5MT #24949	3518 Bellefontaine St. Houston, TX 77025-1310	(713) 668-8408	N5MT@aol.com
CW	Lee Zalaznik, K16OY #50948	334 Olivina Ave., Livermore, CA 94551-6137	(925) 455-0361	lee.zalaznik@sbcglobal.net
Digital	Mel Sojka, KD5DE #33513	353 Atlantic Ave., Shreveport, LA 71105-2909	(318) 861-7012	kd5de@nwla.com
Mobile	Ed Redwine, K5ERJ #11843	9 Yellowrose Lane, Augusta, KS 67010-2230	(316) 775-5700	k5erj@yahoo.com
OM/XYL	Marcus Lieberman, KM5EH #71103	2300 Hurley Drive NW, Albuquerque, NM 87120-1013	(505) 836-1724	buckml@lobo.net
WAS	Eva Donaldson, WB0CON #53964	12933 W Montana Drive, Lakewood, CO 80228-4244	(303) 989-0475	wb0con@comcast.net
WPX	Al Longo, NN1J #41728	PO Box 94, Springfield, ME 04487-0094	(207) 738-3268	nn1j@midmaine.com
GB Counties	Mike Crawshaw, G4BLH #18446	50 Kibble Grove, Brierfield Nelson Lincs, England BB9 5EW	01144 1282 613754	g4blh@zen.co.uk

TEN-TEN QSO PARTY RESULTS

AB4HR	42591	020/000	0040	AE6OU	74111	024/003	0051	KC8NDA	74668	019/000	0038
WB7OND	13390	012/001	0025	W6ASP	73446	022/004	0048	KC8WLD	74977	016/004	0036
KG4ZDM	75033	009/000	0018	KE6RQQ	74224	019/002	0040	CALL AREA 9			
KF4UTH	75001	007/001	0015	N6JQI	46305	016/002	0034	CALL	10-10#	CNTCTS	PTS
K0RRP	74775	005/004	0014	KE6GFF	73749	011/006	0028	NA9A	31121	238/220	0876
K4YJI	75022	007/000	0014	KE6GFI	72985	012/003	0027	WA9LJK	70789	132/077	0341
AA4PR	39481	006/002	0014	N6XD	18637	012/002	0026	N9ASC	28018	088/041	0217
W4EHF	10256	006/000	0012	KK6GN	51840	009/000	0018	WD9AQL	60273	077/006	0160
N3FNE	52799	004/000	0008	K6PCM	73365	007/000	0014	KA9BYN	44423	074/005	0153
KC4TBQ	67653	003/000	0006	WA6VLS	27158	006/000	0012	WB9OMC	55959	060/010	0130
CALL AREA 5				K0CSD	05419	005/002	0012	WA8KAZ	72339	046/004	0096
CALL	10-10#	CNTCTS	PTS	KI6CU	73349	003/000	0007	N9AAI	31137	017/003	0037
W5DJT	74798	426/310	1162	KD6BYI	63108	003/000	0006	W9WS	02525	008/001	0017
W5TMC	74810	288/186	0762	CALL AREA 7				CANADA			
K5KDX	74854	285/163	0733	CALL	10-10#	CNTCTS	PTS	CALL	10-10#	CNTCTS	PTS
NM5T	24949	285/115	0685	W7JY	74569	129/060	0318	VE5BF	42037	053/021	0127
K5FBS	48461	256/108	0620	KA7ICF	46221	122/039	0283	VE6CNU	10871	035/11	081
WS5H	74387	208/090	0506	KR7RK	63324	115/046	0276	GERMANY			
W5GVP	11572	192/094	0478	K7YAK	65689	086/037	0209	CALL	10-10#	CNTCTS	PTS
K5EWJ	08356	179/061	0419	WA7SRZ	06224	078/027	0183	DL8YBM	36109	035/016	0086
K5WMH	74676	149/070	0368	N7YU	72571	077/020	0174	DH1PAL	69212	025/014	0064
W5MIC	67874	118/038	0274	N7NRA	74233	057/026	0140	DF3TE	69610	025/009	0059
N5DAS	35877	116/026	0258	KY7W	67955	054/032	0140	DJ2YE	68904	023/011	0057
N5WYR	62116	108/022	0238	W7MC	69078	046/032	0124	DL6DK	39944	026/001	0053
N5PWW	55863	090/047	0227	N7RAA	73827	045/017	0107	DB9DF	74506	026/001	0053
W5NDK	24910	098/026	0222	N7YG	65084	040/026	0106	DK4QO	69087	022/003	0047
W5NMX	45835	088/038	0214	WB7TIR	62550	050/003	0103	QRP			
W5VRY	69779	074/027	0175	K7PVZ	01064	038/017	0093	CALL	10-10#	CNTCTS	PTS
K5RRD	74902	066/009	0141	W7ART	69059	032/002	0066	N0LAY	43501	090/017	0197
WD8JKV	20805	052/027	0131	K7KTP	13326	030/000	0060	KR4OW	74585	080/029	0189
KF5LO	72289	058/008	0124	K7MY	63709	028/004	0060	W6GMT	74931	048/005	0101
KD5ZD	37258	049/024	0122	AA7FK	53104	024/008	0056	AD5IF	73372	038/003	0079
K5CC	50708	059/002	0120	N7GTW	62504	026/002	0054	W9HZC	73090	006/000	0012
NS5R	36388	059/002	0120	K7LYZ	74964	021/001	0043	VE5BCS	42027	003/000	0006
KD5DE	33513	048/010	0106	KB7WOS	67669	018/003	0039	CLUBS			
KM5EH	71103	038/005	0081	NB7Q	08081	017/002	0036	CALL	10-10#	CNTCTS	PTS
WX5I	67839	033/002	0068	W7GSV	07673	016/002	0034	W1NRG	29650	376/204	0956
N5DTT	73679	024/000	0048	AC7MV	73719	015/003	0033	(OP: N1API)			
K5NDB	74738	023/002	0048	N7QHC	59244	014/003	0031	NM5H	68588	285/115	0685
K5ADA	74567	024/000	0048	KC7QGV	74581	014/002	0030	(OP: N5MT)			
W5ZY	23630	022/001	0045	KC7MIQ	68800	008/004	0020	W5DPA	34659	208/088	0504
N5PU	20414	017/000	0034	KC7KML	69401	007/003	0017	(OP: WS5H)			
KE5OBY	75040	012/004	0028	KC7KML	69401	007/003	0017	W8PGW	74726	191/105	0487
KB5DQX	43610	012/002	0026	AF7DX	08121	006/002	0014	(OP: KC8IM)			
KB5UNX	64337	010/004	0024	KC7YYB	74710	004/000	0008	KI4ZCB	74815	105/042	0252
KC5SLQ	71038	011/002	0024	AD7SF	72566	004/000	0008	(OP: K4RRF)			
KM5FF	50356	010/001	0021	KE7FUH	74820	003/000	0006	KD5BZC	42114	048/010	0106
KE5NDN	74588	004/000	0008	CALL AREA 8				(OP: KD5DE)			
N5KAY	39499	004/000	0008	CALL	10-10#	CNTCTS	PTS	K4GSO	39414	032/000	0064
AB5NS	59697	003/000	0006	KC8IM	31959	191/105	0487	(OP: N4LZ)			
CALL AREA 6				KD8IGM	75036	102/053	0257	W7ORE	74409	023/008	0054
CALL	10-10#	CNTCTS	PTS	KB8DDZ	74784	108/023	0239	(OP: K7QXG)			
W6LFO	46336	245/116	0606	KB8UUZ	67605	088/017	0193	DF0AG	74925	026/001	0053
N6OPR	45715	165/072	0402	K8DEL	02978	067/035	0169	(OPS: DL6DK, DB9DF)			
KF6JOQ	71297	144/061	0349	W8JSM	00934	073/014	0160	DL0KAC	73416	025/002	0052
W6AFA	68734	122/080	0324	W8PJY	14574	072/016	0160	(OP: DF3TE)			
K6VMN	31623	116/050	0282	K8IZK	73889	048/002	0098	DK0DWK	73418	025/002	0052
WB6OJB	70675	105/047	0257	K9RON	74892	036/001	0073	(OP: DH1PAL)			
N6VOH	50925	095/048	0238	W8HL	56609	030/002	0062	DK0HHC	75417	025/002	0052
W6JNU	40127	067/007	0141	KC8ZYL	74649	029/003	0061	(OP: DH1PAL)			
K6AWO	21291	050/027	0127	N8WAV	70451	030/000	0060	KK5W	67832	017/000	0034
W6DPD	12376	045/001	0091	N8QE	55415	025/005	0055	(OP: K5NDB)			
				WC8E	27415	023/008	0054				

TEN-TEN QSO PARTY RESULTS

CHAPTERS SCORES								
CHAPTER	LOGS	PTS						
SHOT	12	3125	CHIEF SEATTLE	4	315	KE5EJT	00000	021/002 0044
GOLD CITY	3	2558	CHESAPEAKE BAY	1	263	KE7LHT	00000	002/000 0004
CASTLE CRAIG	4	2440	COLORADO QM	1	227	KF6JQC	00000	011/000 0022
POSSOM TROT	18	1983	REPUBLIC OF TEXAS	3	173	KG0AL	00000	010/001 0021
LONESTAR	10	1767	LILAC CITY	3	117	KI5XP	59668	063/025 0151
NORTH GEORGIA	2	1250	SANTA FE TRAIL	1	62	KU4UV	71858	025/005 0055
RED RIVER VALLEY	5	1210	PORTLAND 500	1	60	N4KTM	00000	009/000 0018
CITY OF LIGHTS	2	1093	CITY OF ROSES	1	56	N9JCA	00000	043/014 0100
CYPRESS	6	992	MILWAUKEE	1	37	NF8M	74222	011/000 0022
ARIZONA DESERT	10	787	CRAZY 8'S	1	19	NS8O	74139	017/002 0036
CATT	5	782	WINDFARMS	1	18	VE3OX	00000	062/005 0129
NEANDERTHAL	11	628	CHECKLOGS			W1HI	11530	473/337 1285
MICHIGAN ROBINS	1	487	CALL	10-10#	CNTCTS	PTS	W6MEM	00000 024/000 0048
BATTLE ROAD	4	486	AC7HI	69139	070/031	0171	WB0GAG	00000 020/001 0041
GATEWAY	4	485	AC7SM	00000	016/000	0032	WB0TSR	71380 054/003 0111
CHANNEL ISLANDS	7	409	KB1HAR	74643	020/010	0050	WB9MII	54926 005/000 0010
MLB	1	402	KB3RML	00000	012/000	0024	WB9YWE	18576 015/000 0030
			KB8UEY	00000	031/002	0064		
			KC4KIO	00000	012/000	0024		

SPRING DIGITAL

May 2-4, 2008

TOP TEN				CALL AREA 4				CLUBS			
CALL	10-10#	CNTCTS	PTS	CALL	10-10#	CNTCTS	PTS	CALL	10-10#	CNTCTS	PTS
01 K4QQH	26040	011/008	0030	K4QHH	26040	011/008	0030	KD5BZC	42114	004/000	0008
02 N4ZCG	56067	010/003	0023	N4ZCG	56067	010/003	0023	(OP: KD5DE)			
W5GVP	11572	011/001	0023	WN4AMO	73825	008/003	0019	KI4ZCB	74815	002/003	0007
03 WN4AMO	73825	008/003	0019	KU4XO	68613	005/008	0018	(OP: KK3Q)			
04 KU4XO	68613	005/008	0018	KU4W	20986	006/004	0016	CHAPTERS SCORES			
05 KU4W	20986	006/004	0016	N4ERM	34524	006/001	0013	CHAPTER	LOGS	PTS	
06 N4ERM	34524	006/001	0013	KC4TVZ	60783	004/003	0011	GOLD CITY	2	41	
07 KC4TVZ	60783	004/003	0011	K4RRF	49979	004/002	0010	POSSUM TROT	3	39	
08 K4RRF	49979	004/002	0010	KL7NL	62595	005/000	0010	LONESTAR	2	29	
KL7NL	62595	005/000	0010	KK3Q	26039	002/003	0007	CYPRESS	4	28	
09 KD5DE	33513	004/000	0008	KG3GW	71866	003/000	0006	RED RIVER VALLEY	2	16	
10 KK3Q	26039	002/003	0007	N3DCJ	74876	002/000	0004	GATEWAY	1	1	
				KN4Y	17757	002/000	0004				
CALL AREA 0				CALL AREA 5							
CALL	10-10#	CNTCTS	PTS	CALL	10-10#	CNTCTS	PTS				
W0RTV	13962	000/001	0001	W5GVP	11572	011/001	0023				
CALL AREA 2				KD5DE	33513	004/000	0008				
CALL	10-10#	CNTCTS	PTS	KD5ZD	37258	003/000	0006				
W2IUC	07860	001/000	0002	K5CC	50708	003/000	0006				

10-10 Has Two Official Daily Nets

28.380 and 28.800

Both Run At 1800z Every Day Except Sunday

Listen And If You Can Hear Us Join IN!!!

TEN-TEN QSO PARTY RULES

6.2 10-10 QSO PARTIES

10-10 QSO Parties are events that are held for fun and to meet old, new and prospective members around the world. The rules listed here are for all general QSO parties. The Anniversary, Meet the Volunteers, and Mobile QSO Parties are specialty events and do have additional rules.

6.2.1 WHO IS ELIGIBLE?

QSO Parties are open to all amateurs with operating privileges on the 10 meter band, however logs will be accepted only from active members as of the date of the event. Other logs received will be handled as checklogs. Checklogs are used to validate (check) other logs but do not receive awards.

6.2.2 WHEN ARE THE QSO PARTIES?

There are currently seven QSO Parties held through the calendar year:

Winter Phone - held on the first full weekend in February

0001 UTC Saturday through 2359 UTC Sunday.

Spring - held on the first full weekend in May.

0001 UTC Saturday through 2359 UTC Sunday.

Spring Digital - held on the first full weekend in May.

0001 UTC Saturday through 2359 UTC Sunday.

Summer Phone - held on the first full weekend in August.

0001 UTC Saturday through 2359 UTC Sunday.

Sprint - a 24 hour event held on October 10th (10-10).

0001 UTC through 2359 UTC.

Fall CW - held on the last full weekend in October.

0001 UTC Saturday through 2359 UTC Sunday.

Fall Digital - held on the last full weekend in October.

0001 UTC Saturday through 2359 UTC Sunday.

6.2.3 FREQUENCY AND MODES

Direct unassisted contacts only are permitted. Repeater, Satellite, IRPL or any other similar types of assisted contacts are NOT allowed.

Based on the appropriate band plan for the country of operator, CW, QSO Parties should be operated in the CW area of the 10 meter band and operated using CW only. Digital QSO Parties should be operated in the digital area of the 10 meter band and operated using Digital modes only (RTTY, PSK, etc). Phone QSO Parties must be operated in the PHONE area of the 10 meter band and may be operated using any approved method (SSB, FM, AM).

The SPRINT utilizes all operating modes in the 10 meter band.

NOTE: A QUIET ZONE between 28.490 and 28.510 shall be in effect during QSO Parties using the Phone portion of the 10 meter band to allow for others to use the band.

6.2.4 ENTRY CLASSIFICATION

Entrant may submit a log in ANY of the following classifications:

INDIVIDUAL: Includes single station operators and can also include OM/XYL teams or any families or groups of people using individual call signs and 10-10 numbers.

QRP: same as an individual as listed above except that output power does not exceed 5 watts with CW/Digital operations and/or 10 watts with Phone operations during the entire event.

CLUB: A Club must have a valid club station license issued by their National Licensing Authority. The club must have active 10-10 membership. Club entries must additionally list the call, name, and 10-10 number (if any) for all operators entering under a club entry an individual log for contacts made using their own call sign.

6.2.5 TRANSMITTER INFORMATION

An operator may operate mobile, portable or fixed. If they change their exchange QTH during the QSO Party, the operator must show same in their log. The operator may enter a log from one call district, province, or DX country. Multi-transmitters (two or more transmitters operating simultaneously, sharing one call sign) are NOT permitted in any QSO Party. If a single transmitter becomes inoperable, it is permissible to change to a replacement transmitter.

6.2.6 EXCHANGE

10-10 members send call sign, name, 10-10 # and QTH (State, Province or Country). If received exchange does not have a 10-10#, then record a zero(0) in the log.

6.2.7 QSO POINTS

Two (2) points are awarded for contacts WITH a 10-10 number.

One (1) point is awarded for contacts WITHOUT a 10-10 number.

Duplicate entries should be retained in log and show a zero (0) for points.

Any log showing 10% or more errors may be handled as a checklog.

A station may be counted only once regardless of mode.

6.2.8 CHAPTER SCORE ASSIGNMENT

Any entrant who is a chapter member and whose operating location is within 150 miles of the primary net location of that chapter, may assign the entrant's score to that chapter. QSO Party scores for the Sprint may not be assigned.

6.2.9 QSO PARTY ENTRIES

Logs shall be forwarded to the QSO Party Manager as identified in the 10-10 NEWS or on the 10-10 web site. It is strongly suggested that logs be sent as soon as possible after the close of the event. It is also recommended that DX logs should be sent AIR Mail to insure they are received in good time. Any logs received with a postmark date AFTER the deadline date will be handled as a checklog. Any logs received more than 15 days after the entry deadline, regardless of postmark, will be discarded.

6.2.9.1 ENTRY DESCRIPTION

Entries must contain a Cover Sheet, Log, and Dupe Sheet as described here:

COVER SHEET will list the Event Entered, Entry Classification, US Call Area (W0-W9) or DX Country, Chapter Score Assignment (if any), number of contacts and points with 10-10#, number of contacts and points without 10-10#, and total contacts and points claimed.

LOG must be listed in date/time order and list UTC Date, UTC Time, Call, Name, 10-10# (zero (0) if none), QTH and Contact Point Value.

DUPE SHEET is required for any logs exceeding 50 contacts. It may be either a list of all calls contacted in call sign order, or hand entered on a dupe sheet grid.

6.2.9.3 ENTRY DEADLINES

Entries for all QSO Parties listed EXCEPT the Sprint shall be postmarked no later than 15 calendar days (this will always be a Monday) after the close of the event. Mailed entries for the Sprint (held on 10/10) shall be postmarked no later than October 25th, unless that day falls on a Sunday, then the postmark deadline shall be October 26th.

6.2.10 QSO PARTY RESULTS AND AWARDS

QSO Party results will be posted on the 10-10 web site about 15 days after the closing deadline for the event, and also printed in the 10-10 NEWS in the appropriate issue.

Awards will be issued by the certificate manager for Top Ten Individual scorers in the World, the top Individual scorer in each US Call Area (W0-W9) and each DX Country, and for top QRP, CLUB and CHAPTER.

6.2.11 ANNIVERSARY QSO PARTY and MEET THE VOLUNTEERS

These events run from January 1 0001 UTC to December 31 2359 UTC.

In the Anniversary QSO Party, entrants may submit a log of contacts with members that have 10-10's anniversary year contained in their membership number.

Example: 2008 is the 46th anniversary year of 10-10 International Net, Inc. Contact with members containing a "46" in their membership number (i.e., 72046, 69465, 64654, 46126, 00467) would count toward the event. Each year the anniversary number changes, making a new group of members the focus of the event and promoting the use of the 10-meter band. All general rules are applicable with the following exceptions:

During the calendar year (January 1 through December 31) make legal 10-10 contacts with 10-10 Number, Date, Call Sign, QTH with members containing the anniversary year in their membership number as described above.

In the MEET THE VOLUNTEERS event, entrants may submit a log of contacts with members listed in the 10-10 NEWS as being a 10-10 volunteer. One contact per volunteer is permitted, regardless of mode of contact.

In both events, contacts must be made on the 10-meter band with any legal mode (AM, SSB, FM, PSK, CW, etc.).

All submitted logs must contain only one entry for each 10-10 number contracted. Contacts MUST be listed in 10-10 number order and each entry must list the 10-10 Number, Date, Call Sign, Name, QTH and Mode, in that order.

These events are for Individual entries as described in section 6.2.4 and certificates will be awarded for the TOP Ten, however all entrants will be listed in the 10-10 NEWS.

Logs shall be forward to the QSO Party Manager as identified in the 10-10 NEWS or on the 10-10 web site. Logs MUST be postmarked no later than January 15th of the year following the Anniversary QSO Party year entered. Only members in good standing (with dues paid) are allowed to submit logs.

6.2.12 MOBILE QSO PARTY

This event is held on the third Saturday in March from 0001 to 2359 UTC. All general rules are applicable with the following exceptions:

Fixed station contact mobiles, mobiles contact everyone. Mobile applies to vehicular, marine, aeronautical or other mode of transportation. If in doubt, contact the QSO Party Manager. A station operating a mobile entry must be a true mobile. Sitting in the driveway and using the base station antenna or amplifier, of using commercial power is not permitted. RV generators are permitted only if the generator is used while in transit (moving).

Operation while your vehicle is parked across a county line, occupying two counties, counts as two counties and two contacts. Marine and aeronautical mobiles must be able to establish counties of operation.

The on-the-air exchange shall be Call, Name, State, 10-10 Number (if member, zero (0) if not), and county (if applicable). Only counties in the USA, Canada and England may be used as a multiplier.

Count one point for each contact whether a member or not. Fixed stations multiply the number of contacts by the number of different counties worked. Mobile stations multiply the number of contacts by the number of different counties worked PLUS a bonus of the number of counties worked from.

All stations must submit separate logs for the counties worked from. Log scores will be combined by the QSO Party Manager.

Logs shall be forward to the QSO Party Manager as identified in the 10-10 NEWS or on the 10-10 web site. Logs MUST be postmarked no later than 14 days after the end of the event. Only members in good standing (with dues paid) are allowed to submit logs.

6.2.13 FOR MORE INFORMATION

Current information about 10-10 and upcoming 10-10 QSO Parties is always available on the 10-10 web site. Cover sheets, logging forms and dupe sheets are also available for downloading or printing. The address is <http://www.ten-ten.org>. Any unanswered questions regarding the QSO Party rules may be forward to the QSO Party Manager.

TEN - TEN NET GUIDE

as of 8 September 2008

DAY	ZUSM	ZWIN	CHAPTER	QTH	FREQ	DAY	ZUSM	ZWIN	CHAPTER	QTH	FREQ
SUN	0059		Margarita and Martini	Lilburn, GA	28330*	WED	0100	0200	Houston SHOT	Houston, TX	28488
SUN	0300	0400	Chief Seattle	Seattle, WA	28630	WED	0200	0300	10 Bar X	El Paso, TX	28440
SUN	0830	0930	Corinage	Colfontaine, ON	28785	WED	0300	0400	Edmonton Area/City of Champions	Edmonton, ALB	28520
SUN	1200	1300	Elmer J Fudd	Berwick, PA	28340	WED	0300	0400	Chief Seattle	Seattle, WA	28630
SUN	1300	1400	GB Ten	Spalding, GA	28860	WED	1200	1300	Elmer J Fudd Net	Berwick, PA	28340
SUN	1300	1400	Arlington	Arlington, VA	29200	WED	1700		Gold City	Shreveport, LA	28425
SUN	1430		Cincinnati Area 10-10ers	Milan, IN	28960	WED	1700	1800	Channel Islands	Oxnard, CA	28340
SUN	1500	1600	Neanderthal Chapter	Leichlingen, DL	28355	WED	1900	2000	Outlaws on Ten	San Antonio, TX	28644
SUN	1630	1730	Possum Trot	Rarford, NC	28345	WED	2200	2300	Route-66	Boonville, IN	28370
SUN	1700	1800	Major Lague Baseball	La Mirada, CA	28380	WED	2300	2359	Michigan Robins	Southfield, MI	28493
SUN	1800	1900	Portland 500	Salem, OR	28350	WED	2300	2359	Southwest FL 10-Meter Moonshine	Port Charlotte, FL	28405
SUN	1900		Cypress	Orlando, FL	28040 CW	W/T	2359	0059	Battle Road	Mason, NH	28390
SUN	1930		North Georgia	Atlanta, GA	28610	THU	0001	0100	Egyptian Radio Club	Granite City, IL	28420
SUN	1930	2030	Steel City	Eubanks, KT	28420	THU	0001		Cradle of the Confederacy	Pike Road, AL	28350
SUN	2100	2200	Possum Trot	Raeford, NC	28150 CW	THU	0100	0200	Channel Islands	Oxnard, CA	28340
SUN	2200	2230	SO TX Lighthorse Brigade	San Antonio, TX	28345	THU	0100	0200	Gateway	St Louis, MO	28650
SUN	2300	2359	SW FL 10-Meter Moonshine Net	Port Charlotte, FL	28405	THU	0100	0200	Milwaukee	Milwaukee, WI	28365
MON	0001	0100	Chesapeake Bay	Chestertown, MD	28435	THU	0130	0230	Cowtown	Arlington, TX	28460
MON	0030	0130	Minuteman	Saugus, MA	28150 CW	THU	0230	0330	Windfarms	Livermore, CA	28485
MON	0100		Arizona Desert 10-10 Net	Phoenix, AZ	28445	THU	0300	0400	Chief Seattle	Seattle, WA	28630
MON	0100	0200	Milwaukee	Milwaukee, WI	28365	THU	1200	1300	Elmer J Fudd Net	Berwick, PA	28340
MON	0100	0200	Lonestar	Arlington, TX	28460	THU	1300	1400	GB Ten/Laurel Mancunium	Spalding, GA	28870
MON	0030	0130	Palmetto	Hollywood, SC	28450	THU	2000		Branding Iron	Kemper, TX	28345
MON	0130	0230	Bauxite	Benton, AR	28470	FRI	0001	0100	Crazy Eights	McKeesport, PA	28388.88
MON	0300	0400	Chief Seattle	Seattle, WA	28630	FRI	0001	0100	Ft McHenry/Cornerstone/Yodar Kritch	Arbutus, MD	28370
MON	1200	1300	Elmer J Fudd Net	Berwick, PA	28340	FRI	0100	0200	Sky Blue Waters/Twin Cities/Tin Lizzie	Afton, MN	28380
MON	1700		Colorado Quartermaster	Widefield, CO	28120 PSK	FRI	0300	0400	Chief Seattle	Seattle, WA	28430
MON	1730		Santa Fe Trial	Gales, IL	28380	FRI	1200	1300	Elmer J Fudd Net	Berwick, PA	28340
MON	2030		Space Coast	Elmendorf, TX	28355	FRI	1400		New Waterkant	Boerm, DL	28355
MON	2130	2200	Colorado Quartermaster	Widefield, CO	28360	FRI	2230	2130	Down Under	Auckland, ZL	28530
MON	2100		Oceans of the World/Sun Coast Radio Weeki Wachee	FL	28375	SAT	0001	0100	MAINE-iacs	North Haven, ME	28402.5
TUE	0001	0100	Ft McHenry/Conerstone/Yodar Kritch	Arbutus, MD	28370	SAT	0100	0200	Busy Bees	San Angelo, TX	28360
TUE	0100	0200	CO Centennial/CO Frontier Gang	Lakewood, CO	28340	SAT	0300	0400	Chief Seattle	Seattle, WA	28630
TUE	0100	0200	City of Lights	St Charles, IL	28150 CW	SAT	1200	1300	Elmer J Fudd Net	Berwick, PA	28340
TUE	0130	0230	City of Lights	St Charles, IL	28720	SAT	1330	1430	Springbok	Meadowview, VA	28385
TUE	0130	0230	Bauxit	Benton, AR	28470	SAT	1430	1530	Steamboat Plus	Shreveport, LA	28430
TUE	0130	0230	OK Route 66 Chapter	Oklahoma City, OK	28390	SAT	1500	1600	Republic of Texas	Eules, TX	28460
TUE	0200	0300	Concho Valley	San Angelo, TX	28360	SAT	1510	1610	Louisiana Pelican 10-10 Net	Baker, LA	28450
Tue	0300	0400	Chief Seattle	Seattle, WA	28430	SAT	1600	1700	City of Roses	Beaverton, OR	28835
TUE	0300	0400	Bat Area	Hayward, CA	28475	SAT	1630	1730	Boomtown	Burkburnett, TX	28402
TUE	0430		Aloha	Hilo, HI	28487	SAT	1700	1800	Lilac City	Spokane, WA	28390
TUE	1200	1300	Elmer J Fudd Net	Berwick, PA	28340	SAT	1730	1830	Tango	Buenos Aires, LU	28650
TUE	1500	1600	New Mexico Mud Ducks	Albuquerque, NM	28835	SAT	1800		Keystone/Keystone Stars	Brea, CA	28765
TUE	1800		Electric City	Melbourne, FL	28425	SAT	1900		Peshtigo Fire	Wisconsin Rapids, WI	28370
TUE	2000		Branding Iron	Kemper, TX	28345	SAT	2000		Restoration Project	Port Alberni, BC	28747
TUE	2300	2359	Fort McHenry	Arbutus, MD	28370	SAT	2200		Alii	Lihue, HI	28730
T/W	2330	0030	Republic of Texas	Eules, TX	28460	SAT	2300		Oregon Trailblazers	Lander, WY	28450
WED	0001	0100	Castle Craig	Meriden, CT	28375	(*) New or change					
WED	0001		Cypress	Orlando, FL	28465	All changes to the above times and/or frequencies should be referred to the Chapter Manager if you desire accuracy of your net. Chapter Manager: K5FBS, Clifford A Taylor, 22707 Red Mountain Drive, Elmendorf, TX 78112-6034. Email: k5fbs@yahoo.com.					
WED	0030		Kansas Trails	Grove City, MN	28385						
WED	0030	0130	All American City	Woodstock, AL	28400						
WED	0030	0130	Minuteman	Sagus, MA	28409						
WED	0100		Cincinnati Area Ten Teners	Milan, IN	28800						

MEMBERSHIP INFORMATION AND SERVICES

WOULD YOU LIKE TO JOIN 10-10?

Here is what you need:

1. You must hold a valid amateur operator license.
2. Your valid amateur operator license MUST authorize or qualify you for unsupervised transmitting operations in the ten meter amateur band under your own personal call sign.
3. You must make contact with ten members of 10-10 and submit a log listing all contacts, their 10-10 number, call sign, name, date of contact, and QTH (state/province/country). A new member application and contact log is available in Section 1 on page 31 of this publication.
4. You must remit dues for one or more years full membership. Fee schedule and payment information can be found in Section 2 on page 31 of this publication.

TYPES OF MEMBERSHIPS

Please see fee schedule in Section 2 on Page 31

Primary Membership

Primary membership is available with yearly dues, although there is a special incentive available when you pay for three years at once.

Family Membership

Family membership consists of a primary member and one or more family members who qualify as a 10-10 member (has made the necessary 10 contacts) and who reside at the same location and postal address. Family memberships run concurrently with that of the primary member. Add \$5.00 for each additional family member for each year. Only the primary member will receive a copy of the 10-10 News.

Life Membership

Life membership is available and may be paid in one lump sum or within a one year period. For information see **Membership** on the 10-10 web or contact the Data Manager.

Senior Life Membership

Senior life membership is available to anyone who is currently 65 years of age or older. Payment can be made as one lump sum or within a one year period. For information see **Membership** on the 10-10 web or contact the Data Manager

Family Life Membership is no longer available

Club Membership

Club Membership is available to any Amateur Radio Organization which holds a valid Amateur Radio License. Application must be made by the club trustee. Dues are the same as the Primary member. No family or life memberships are available. Club members have all the same rights and privileges as primary members except clubs do not vote in elections.

MEMBERSHIP RENEWALS

Fill out fee schedule and method of payment in Section 2 on Page 31 and forward as indicated to Data Manager. Please make sure you include a copy of your address label with form. If you do not have a copy of your address label (renewing after your membership has lapsed), please include a note with your name, current mailing address, call sign and 10-10 number.

DATA MANAGER SERVICES

Call/Name/Address Changes

All changes are to be sent to the 10-10 Data Manager. Please include your address label (or a copy) with necessary corrections.

10-10 Information Brochure

The 10-10 Information Brochure is 14 pages of everything you would want to know about 10-10. It can be downloaded from the 10-10 web or is available from the Data Manager for \$2.00.

WinIQ

WinIQ is a Windows based program that is updated monthly and is a cross reference between the call and 10-10 number. It can be found on the 10-10 web or at www.lingerinc.com

XXIP

XXIP is a DOC based program that is updated monthly and is a roster of 10-10 membership through 10-10 #75001. It is available free at www.lingerinc.com or on a CD-ROM for a \$10.00 US or \$13.00 DX Postpaid.

AN-TEN-TEN-NAS

AN-TEN-TEN-NAS is a book by L. B. Cebik containing 30 articles and designs for 10 meter antennas from the pages of the 10-10 NEWS. The price has been drastically reduced to \$5.00 USD or free if you renew for 3 years. You must also include the additional \$5.00 US or \$8.00 DX for shipping.

ALL THE NEWS ON CD-ROM

Every published issue of the 10-10 NEWS on one CD. \$20.00
All profits from the sale of AN-TEN-TEN-NAS and the 10-10 NEWS on CD-ROM go to the 10-10 Scholarship Foundation.

Payment may be made by Check, Money Order or IRC's (\$1.00 USD per IRC). VISA and Mastercard are acceptable. Please provide Card Number, Expiration Date, Name on Card, Phone Number and signature of Cardholder.

Mail to:

Data Manager, 10-10 International Net, Inc.
PMB142
643 N. 98th Street
Omaha, NE 68114-2342

SCHOLARSHIP DONATIONS

Donations to the 10-10 Scholarship Foundation are requested from each member on an annual basis to help fund the five \$1000.00 10-10 scholarship. Your check should be made payable to the 10-10 Scholarship Foundation and sent to:

Larry Berger, WA2SUH #00407
10-10 Scholarship Manager
9 Nancy Blvd.
Merrick, NY 11566-3119

SECTION 1 - MEMBERSHIP APPLICATION AND CONTACT LOG

NOTE: If this membership application is being used for renewal purposes, please enter your 10-10 number here _____

Please print your Name _____ Call _____ Year of Birth _____

Address _____

City _____ State or Country _____

Postal/Zip Code _____ E-mail Address _____

NOTE: 10-10 NUMBER, CALL, NAME, ADDRESS, MEMBERSHIP STATUS AND E-MAIL ADDRESS IS MADE AVAILABLE TO ALL MEMBERS VIA A MEMBERSHIP ROSTER. ALL OTHER INFORMATION IS KEPT CONFIDENTIAL AND NOT DISCLOSED EXCEPT BY ORDER OF A LAWFUL COURT.

I certify that I meet the membership requirements* of 10-10 _____

YOUR SIGNATURE

*As listed on Page 30 of this publication

QSO	10-10 NUMBER	CALL SIGN	OPERATOR'S NAME	DATE OF CONTACT	QTH (State, Province or DX Country)
1					
2					
3					
4					
5					
6					
7					
8					
9					
10					

SECTION 2 - FEE SCHEDULE AND PAYMENT INFORMATION

10-10 FEE SCHEDULE (eff 2/1/03)	US Zip Codes	DX
New Members	<input type="checkbox"/> \$ 15.00	<input type="checkbox"/> \$ 18.00
Renewals (yearly)	<input type="checkbox"/> \$ 15.00	<input type="checkbox"/> \$ 18.00
Renewals - 3 year incentive	<input type="checkbox"/> \$ 40.00	<input type="checkbox"/> \$ 49.00
Family Membership (yearly)	<input type="checkbox"/> \$ 5.00	<input type="checkbox"/> \$ 5.00
Life Membership	<input type="checkbox"/> \$500.00	<input type="checkbox"/> \$650.00
Senior Life	<input type="checkbox"/> \$150.00	<input type="checkbox"/> \$200.00
Scholarship Foundation Donation	<input type="checkbox"/> _____	<input type="checkbox"/> _____
Enter Total		

Mail to:
Data Manager
Ten-Ten International Net, Inc.
PMB142
643 N. 98th Street
Omaha, NE 68114-2342 USA
 For information E-mail: wa6poz@arri.net

METHOD OF PAYMENT

- ☐ CHECK Make all checks payable to 10-10 International Net, Inc. Please list your call and 10-10 # on your check.
 Do not send cash. All DX are reminded that money amounts are quoted in US Dollars.
 DX Members please pay by International Money Orders (IRC's are acceptable).
- ☐ MASTERCARD Account Number (Please include all the numbers on your credit card)

☐ VISA

Good Through: /

Name of Cardholder _____ PHONE (required): _____

SIGNATURE of Cardholder _____ Date: _____

For charges this form may be faxed to 10-10 International Net, Inc. A

10-10 QSO PARTY COVER SHEET

2008 EVENTS	Event	Postmark	Event	Postmark
<input type="checkbox"/> Winter Phone	Feb 2-3	Feb 18	<input type="checkbox"/> Sprint	Oct 10
<input type="checkbox"/> Mobile	Mar 15	Mar 31	<input type="checkbox"/> Fall CW	Oct 25-26
<input type="checkbox"/> Spring CW	May 3-4	May 19	<input type="checkbox"/> Fall Digital	Oct 25-26
<input type="checkbox"/> Spring Digital	May 3-4	May 19	<input type="checkbox"/> Anniversary (46)	Jan 1 - Dec 31
<input type="checkbox"/> Summer Phone	Aug 2-3	Aug 18	<input type="checkbox"/> Meet the Volunteers	Jan 1 - Dec 31

Name _____ Callsign _____ 10-10# _____

Address _____

City _____ State/Province/Country _____ Zip _____

Your e-mail address (for contest questions only) _____

PLEASE LIST CONTEST EXCHANGE

Call _____ Name _____ 10-10# _____ QTH _____

ENTRY TYPE <input type="checkbox"/> INDIVIDUAL <input type="checkbox"/> QRP 10 watts or less Phone, 5 watts or less CW/ Digital <input type="checkbox"/> CLUB Only for those operating as a Club Station. <i>If Operating under a Club call, please list all operators and their 10-10 numbers (if any) on the log.</i>	US Call Area (W0-W) Or ARRL DX Country You operated from	Claimed Score Contacts WITH 10-10 Number: _____ x2= _____ Contacts WITHOUT 10-10 Number: _____ x1= _____ Total Contacts: _____ Total Pts _____ <small>Note: DUE TO MULTIPLIERS, THE MOBILE QSO PARTY WILL BE SCORED BY THE CONTEST MANAGER</small>
Chapter Assignment (Not valid for Sprint)		

All submissions must contain this cover sheet (or a reasonable facsimile), the log in UTC Date/Time order,
And a Dupe Sheet (if more than 50 contacts) in *callsign* order or in grid format.
Mail to Dan Morris, KZ3T, 131 Valencia Lane Statesville, NC 28625, USA
Emailed address Logs maybe emailed to tentencontest@roadrunner.com

www.ten-ten.org

www.ten-ten.org

Electronic version of this issue at www.lingerinc.com - logon Oct2008 - password FinallyFall (case sensitive)

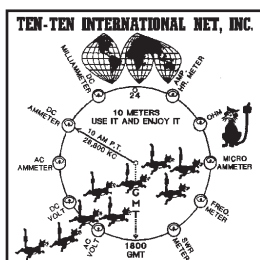
10-10 International Net, Inc.
PMB 142
643 N 98th Street
Omaha, NE 68114-2342

Address Services Requested

**TIME TO RENEW? EXPIRATION DATE IS
ON MAILING LABEL BELOW**

FIRST CLASS

**PRE-SORTED
FIRST-CLASS MAIL
U.S. POSTAGE
PAID
OMAHA, NE
PERMIT 1799**



**October
(Autumn)**