

10-10 INTERNATIONAL NEWS

Volume 41 Issue 1

\$1.50

January 2003 (WINTER)

A Simple Final Wish; A Very Big Response

L. B. Cebik, W4RNL, #41159

Jean Cebik, N4TZP, #49092, was my wife and so much more. She passed away Monday, November 4, 2002, at the age of 59 after a 13-month struggle with cancer. We operated for many years as a 10-10 OM-YL team on 10 meters. She was my constant companion at every hamfest to which we traveled. The dedication that appears in each of my books available from antenneX bears witness to Jean's importance in my life:

"All of the volumes of my antenna studies are dedicated to my wife, my friend, my supporter, and my colleague, all of whom are Jean. Her patience, understanding, and assistance gave me the confidence to retire early from academic life to undertake full-time the continued development of my web site. The site is devoted to providing, as best I can, information of use to radio amateurs and others--both beginning and experienced--on various antenna and related topics. Each volume grew out of that work and, hence, shows Jean's help at every step."

Jean was also a state and federally licensed and IWRC certified wildlife rehabilitator specializing in songbirds. Songbird rehabilitation came Jean's way after her varied career during which was an avid bird watcher who did not so much wish to create a long life list as she wished keenly and sensitively to observe songbird behavior. She became a rehabilitator in the mid-1990s, and she used her observations to create cage and aviary enrichments for both orphan and injured birds, in some years single-handedly caring for over 300 birds. She achieved a 70% success rate for release. Still, she cried for each of her charges who did not survive.

Jean was noted for her selfless devotion to songbird and wildlife rehabilitation. She was a member of the East Tennessee Wildlife Rehabilitation Council, which, in conjunction with Knoxville's Ijams Nature Center, planted on December 7 a serviceberry tree as an enduring, useful, and living memorial to Jean. The East Tennessee DX Association has promised another planting at the Nature Center for Spring, 2003.



The ETWRC-Ijams plantings grew out of Jean's final wish, which I had added to notes on her passing to both amateur radio and wildlife rehabilitation organizations. Jean's final wish was simple: that everyone she knew should plant a tree or shrub in his or her yard to nourish, nurture, and protect the songbirds that she so much loved and so ably rehabilitated.

Jean's wish reached both wildlife rehabilitators and amateur radio operators throughout the U.S. and beyond. Response has been overwhelming, with Autumn plantings or promises of Spring plantings amounting to a large grove, if not a small forest. I have received direct and indirect e-mail amounting to perhaps 200 responses. There are plantings as far way from Jean's Knoxville, TN, home as Australia, where the planter of a Golden Wattle noted that the sun should never set upon Jean's memory. Although Jean's innate modesty might not have let her say so, nothing would have pleased her more than the response to her final wish. And it is always possibly to plant one more tree or shrub to care for her birds. As we protect them, so too do we help protect ourselves.

IN THIS EDITION - IN THIS EDITION - IN THIS EDITION - IN THIS EDITION

**EGMONT KEY/LIGHTHOUSE EXPEDITION - PAHRUMP GATHERING
CONVENTION NEWS/REGISTRATION - 41st ANNIVERSARY QSO PARTY
ELECTION RESULTS - SPRINT AND FALL CW CONTEST RESULTS**

The 10-10 International News

is published four times annually by the TEN-TEN INTERNATIONAL NET, INC. Publication dates are approximately mid January, April, July and October.

Each paid-up member will receive a copy. This is an independent publication. Permission to reprint is hereby granted, providing suitable credit is shown.

News items should be sent to the Editor. Technical articles and information on all 10-meter activities or news are welcome and solicited. All copy submitted must be typed, sent on computer disk or via E-mail. Suitable formats will be provided upon request.

Photographs are encouraged. Black and White or Color are acceptable. Include complete information on the back of each photo. Attach a label or other suitable paper to the back of the photo and write all information on the label, not the photo. If sending digital images, high resolution of a minimum 300 dpi must be used. Please do not send newspaper or digitally printed photos as they cannot be used.

Please mail all articles and photos to:

EDITOR 10-10 News
Steve Rasmussen, NØWY #68684
312 N 6th Street, Plattsmouth, NE 68048-1302
Email: n0wy@alltel.net



10-10 CHAPTER ACTIVITY REPORTS should be sent to the Chapter Coordinator
ADDRESS CHANGES: Members with US Zip Codes should send address changes to the Data Manager. All other members should send changes to the DX Area Manager.

NOTE: 10-10 IS NOT RESPONSIBLE FOR POSTAL SERVICE DIFFICULTIES

DEADLINE FOR NEXT ISSUE: 1 Mar 2003

Member
AMATEUR RADIO NEWS SERVICE



OFFICERS, DIRECTORS AND NET OFFICIALS

Award Managers listed on Pg 23 - Membership Information listed on Pgs 30-31

President

Chuck Imsande, W6YLJ #19636
 20815 Desert Sands Dr., Sun City West, AZ 85375-5443
 (623) 214-8788w6ylj@arrl.net

Vice President

Michael P. Elliott, K7BOI #54625
 11286 West Hickory Dale Dr., Boise, ID 83713-1028
 (208) 376-3458k7boi@cableone.net

Secretary

Dick Corlew, NC6V #25057
 3213 Carolyn Circle, Oceanside, CA 92054
 (760) 757-9284nc6v@cox.net

Treasurer

Keith Schlottman, KR7RK #63324
 9581 E. Calle Cascada, Tucson, AZ 85715-5819
 (520) 290-5883kr7rk@arrl.net

Directors

Linda Barnes, KJ4FM #43299
 310 Sequoyah Drive, Kingsport, TN 37660-3742
 (423) 378-3082kj4fm@chartertn.net

Larry Berger, WA2SUH #00407
 9 Nancy Blvd., Merrick, NY 11566-3119
 (516) 223-4611wa2suh@aol.com

Mike Crawshaw, G4BLH #18446
 50 Kibble Grove, Brierfield, Nelson, Lancs, England BB9 5EW
 Tel 01144 1282 613754g4blh@zen.co.uk

Bill Marple, AA7ZW #62075
 5075 N. Chieftan St., Las Vegas, NV 89149-2513
 (702) 395-1327 or cell phone (702) 501-6332aa7zw@arrl.net

Steve Rasmussen, NØWY #68684
 312 N. 6th Street, Plattsmouth, NE 68048-1302
 (402) 296-4434n0wy@arrl.net

Ed Redwine, K5ERJ #11843
 9 Yellowrose Lane, Augusta, KS 67010-2230
 (316) 775-5700k5erj@aol.com

Cliff Taylor, K5FBS #48461
 22707 Red Mountain Dr., Elmendorf, TX 78112-6034
 (210) 621-2741catk5fbs@aol.com

Joe Williams, WA9TSG #310
 PO Box 511092, Milwaukee, WI 53203
 (414) 263-3618jwilliams@wi.rr.com

Certificate Manager

Ruth Bartholomew, NØKDB #48715
 HC 72 - Box 102A, Sullivan, MO 63080-9204
 (573) 468-2898n0kdb@fidnet.com

Chapter Coordinator

Dave Smith, K6RDK #65812
 1349 Vernon Terr., San Mateo, CA 94402-3331
 (650) 574-2833dsmith@smrn.com

Data Manager / Supplies

Data Manager, 10-10 Int'l Net., Inc.
 PMB 142, 643 N 98th Street, Omaha, NE 68114-2342
 (402) 891-2481wa6poz@arrl.net

Data Verification Manager

Don Ruf, KBØON #29849
 PO Box 717, Columbia City, IN 46725-0717
 (219) 244-6025kb0on@kconline.com

DX Area Manager

Carol Hugentober, WA8YL #29588
 4441 Andreas Avenue, Cincinnati, OH 45211-2622 USA
 (513) 661-5323wa8yl@juno.com

Editor 10-10 International News

Steve Rasmussen, NØWY #68684
 312 N 6th Street, Plattsmouth, NE 68048-1302
 (402) 296-4434n0wy@arrl.net

General Counsel

Dave Splitt, KE3VV #69831
 6111 Utah Avenue NW, Washington, DC 20015-2461
davidssplitt@erols.com

Internet Coordinator

L.B. Cebik, W4RNL #41159
 1434 High Mesa Drive, Knoxville, TN 37938-4443
 (865) 938-6335cebik@cebik.com

Net Manager

Bill Marple, AA7ZW #62075
 5075 N. Chieftan St., Las Vegas, NV 89149-2513
 (702) 395-1327 or cell phone (702) 501-6332aa7zw@arrl.net

Scholarship Manager

Larry Berger, WA2SUH #00407
 9 Nancy Blvd., Merrick, NY 11566-3119
 (516) 223-4611wa2suh@aol.com

SK Manager

Ruth Bartholomew, NØKDB #48715
 HC 72 - Box 102A, Sullivan, MO 63080-9204
 (573) 468-2898n0kdb@fidnet.com

W6OI Station Trustee

Jack Moore, K5CC #50708
 371 Ridge Creek Lane, Bulverde, TX 78163
 (830) 885-2194k5cc@arrl.net

HOT OFF THE PRESS

Steve Rasmussen NØWY #68684
Editor 10-10 News



Happy New Year!!!! It's 2003. Can you believe it? I'm still in shock over getting to the year 2000. Time seems to be racing ever faster....could it be because I'm getting older? Isn't that a direct result of the years going by? Guess I'm gonna have to be careful at the advanced age of....53? Now don't all of you groan at once!!!! It's all relative...maybe brought on by relatives? I seem to keep finding new grandchildren. Have six and now find out there will be another one this spring. Oh well, that's life!!!

I have been having a lot of fun around the house the last couple of weeks. Dug a big hole and just finished pouring the footing for my new-to-me fifty foot tilt-over aluminum tower. When the weather warms up a bit will take the antenna down from the top of the house and move it over to the tower. Maybe then I can hear better.

Had some success with the computer program I was testing for the contests, but ended up having to discard it as more trouble than it was worth. It worked very well, but to make it do what it is supposed to do would mean that I would have to add all the contacts from the hand written and spreadsheet logs. After the following survey, you will see why I said "no way!"

I surveyed three contests. The Summer Phone, the Sprint and the Fall CW. I separated the logs into three piles. One with computerized logging program outputs, one with spreadsheet or computer created outputs, and one with hand written logs.

# Logs	PHONE	SPRINT	CW
PROGRAM	87	73	28
SPREADSHEET	44	51	19
HAND LOG	83	63	30

# QSO's	PHONE	SPRINT	CW
PROGRAM	8513	8450	1380
SPREADSHEET	3124	4442	659
HAND LOG	3997	3891	1156

As you can see, over half of the logs would have to have been hand entered into the program and I currently do not have a staff to do this. Until most ALL of our members become computerized, I will not even plan on doing this project again. Something else that COULD be done is to create an e-mail entry for those that are so inclined. There are some logistics and testing to be done and will continue working on it. I expect to have a format ready to discuss with the Board of Directors when we meet this summer.

Hope you remembered to send in your Anniversary QSO Party entries. Will have them posted next issue.

Until then will look for you on Ten at Ten (or whenever)

many 73 de Steve NOWY

CONTENTS

<i>Anniversary QSO Party</i>	20
<i>An-Ten-Ten-nas</i>	10
<i>Award Information and Managers</i>	23
<i>Award Listings</i>	24
<i>Chapter Coordinator's Column</i>	12
<i>Contest Cover Sheet</i>	32
<i>Contest Results</i>	28
<i>Contest Rules and Calendar</i>	27
<i>Convention News</i>	6
<i>Convention Registration</i>	7
<i>DX News</i>	14
<i>Egmont Key/Lighthouse Expedition</i>	16
<i>Election Results</i>	5
<i>Hot Off the Press</i>	3
<i>Life Members</i>	21
<i>Membership Application and Contact Log</i>	31
<i>Membership Information and Services</i>	30
<i>Mobile Contest Update</i>	6
<i>Net Control Stations</i>	3
<i>Net Guide</i>	26
<i>Net News and Quarterly Report</i>	20
<i>Officers, Directors and Net Officials</i>	2
<i>Pahrump Gathering</i>	9
<i>President's Message</i>	4
<i>Scholarship Application Information</i>	22
<i>Scholarship Foundation Supporters</i>	22
<i>Silent Keys</i>	18
<i>W6OI #109 On The Air</i>	21
<i>WAS Manager Selected</i>	21
<i>Win1010 Update</i>	19
<i>and much more!</i>	

10-10 NET CONTROL STATIONS

ALL NETS BEGIN AT 1800Z

Monday (28.380)	Dick, K6PZE #01341
Monday (28.800)	Scotty, WA6TQC #00071
Tuesday (28.380)	Tom, KA9EKG #70731
Tuesday (28.800)	Russ, N6CEX #29906
Wednesday (28.380)	Chris, N7PVL #58018
Wednesday (28.800)	Louise, N6ELK #36654
Thursday (28.380)	Bob, N6OPR #45715
Thursday (28.800)	Robert, KQ4PK #63201
Friday (28.380)	Bill, KB9MJ #22313
Friday (28.800)	Alan, VE4ALN #69217
Saturday (28.380)	Ed, KC4RIY #58203
Saturday (28.800)	Donnie, KB6QLC #42822
Sunday	"NEVER ON SUNDAY"

Alternate Net Controller	Don, KBØON #29849
Alternate Net Controller	John, KC2GCL #72143
Alternate Net Controller	Bob, WA6GSV #07673



from the office of the
PRESIDENT
10-10
International

Chuck Imsande
W6YLJ #19636

The election is over and the results are well known. Congratulations to the winners and a big Thank You to those who ran and were not successful in their bid to become an Officer of 10-10. The new Officers and Directors began their term of office on January 1, 2003. The folks retiring from office have served 10-10 with unbelievable hard work and dedication.

Those that were successful in their bid for election were myself as President, Mike Elliott K7BOI #54625 Vice President, Dick Corlew NC6V #25057 Secretary, Bill Marple AA7ZW #62075, Steve Rasmussen N0WY #68684, Cliff Taylor K5FBS #48461, and Ed Redwine K5ERJ #11843 were all elected as Directors.

The retiring Directors are Rex Holford K0NO #20423, Brad Kimble K0DBK #55192, Bob Peschka K7QXG #05956, and Dave Smith K6RDK #65812. Once again, a big Thank You for all of your dedicated and hard work to make 10-10 the great organization that it is today.

Upon the untimely death of our last President, Tom Henderson K4CIH #33233, I took over the presidency of the 10-10 International Net, Inc. During his tenure, Tom instituted an organizational structure that I continued to use during the remainder of that term of office. As we enter 2003, with several new Officers and Directors, we have an opportunity to capitalize on new skill sets. To accomplish this, some re-organization is in order. It is with those thoughts in mind and also in an effort to maximize contribution to 10-10 that I make these changes. The following position assignments will, I believe, capture the best skills for each of our volunteers. If we all work together within this structure, I believe that we can make 10-10 the best it can be.

The following position assignments were effective January 1, 2003:

President - Business & Finance

Scholarship Foundation

Outside Contracts

Vice President - Miscellaneous

W6OI Club Station Trustee, Jack Moore, K5CC

Archivist/Historian, Dave Prichard, KA5OVO

Director - Awards, Ed Redwine K5ERJ

Awards Committee

Director - Chapters, Cliff Taylor K5FBS

Chapter Affiliation, Dave Smith K6RDK

Director - 10-10 Nets, Bill Marple AA7ZW

Net Control Stations

Director - Editor, Steve Rasmussen N0WY

Director - Contests, Linda Barnes KJ4FM

Contest Certificates, Ruth Bartholomew N0KDB

Contest Committee (To Be Announced)

Scoring Manager, Steve Rasmussen N0WY

Director - Internet, Mike Crawshaw G4BLH

Web Site Coordinator, L.B. Cebik W4RNL

Director - Planning, Joe Williams WA9TSG

Convention Committee (To Be Announced)

2003 Convention, Ray Dobson N5DAS

Director - Scholarships, Larry Berger WA2SUH

Data/Membership, Gerry Gross, WA6POZ

Data Verification, Don Ruf, KB0ON

DX Membership, Carol Hugentober, WA8YL

SK's, Ruth Bartholomew, N0KDB

There are still a few open committee positions to be assigned. Those responsible for each committee will be requesting volunteers to serve. It is my desire to have all of these positions filled within the next few weeks.

In addition to the above assignments the Secretary, Treasurer and General Council report to the Board of Directors. I have established an Executive Committee of the following who will report to the President: Mike Elliott K7BOI, Keith Schlottman KR7RK, L.B. Cebik W4RNL, and Ken Harmon K1IEQ. This Executive Committee will be charged with special problems and projects as the need demands.

As you can see from the above organization, each Officer and Director will be responsible for a specific job in addition to the responsibilities of their elected office.

As I write this the year 2002 is coming to a close, and it is time to review a few of our accomplishments and the status of others. The project of providing the NEWS via e-mail has been implemented for this issue. If you subscribed to receive an electronic issue of this edition, you also received a mailed issue. Because this issue was used as a test case, we wanted to be sure everyone got at least one copy. Although there seemed to be a great deal of interest in receiving the NEWS electronically, there were far fewer requests than was initially indicated. The actual number subscribing would make it impractical to set up a separate dues structure for electronically receiving the NEWS. The Board will take another look at this feature after the comments are received from those who elected to be a party to this test.

The election was conducted without any problems, however the response to the over 8000 ballots mailed out

was disappointing. Only approximately 2100 ballots were received back during the voting cycle. Voting by mail costs considerable in printing and postage costs. We will be checking on electronic voting for the next election.

The Scholarship Fund will close out the year without meeting our goal of \$5000.00 in donations. Through the month of November 2002, we have collected a total of \$3318.00. For the donations that were received in 2002, the Scholarship Foundation thanks each and every one of you. The funds come from donations and the sale of certain merchandise such as pins, patches, antenna books, etc. It is unfortunate that we must dig into the 10-10 treasury to make up the shortfall. The Scholarship program is a very important aspect of 10-10 and amateur radio in general. All donations to the Scholarship Foundation are tax free as the 10-10 Scholarship Foundation has qualified as a 501 (c) (3) organization. It is hoped that everyone will consider making a donation to the Scholarship Fund in 2003, and we can continue to offer five \$1000 10-10 Scholarships to worthy 10-10 members and other amateurs each year. Elsewhere in this issue is information on how to submit an application for one of the five 10-10 Scholarship awards.

The 2003 Convention in San Antonio is being finalized by the Convention Committee under the direction of Ray Dobson, N5DAS. The prize list keeps growing as more donations are received. The programs are taking shape and pre-reservations are being received. As of this writing we have almost reached our committed hotel night guarantee. This convention is shaping up as a "winner". If you plan to join all of the Officers and Directors and many of your 10-10 friends, it is strongly recommended that you send your pre-reservation in today, and reserve your hotel room before it is sold out. San Antonio is a great convention city, and I know that you will enjoy the sightseeing trips being planned for your enjoyment. Please join us in San Antonio.

Our first Mobile Contest will be held on March 15, 2003. This is a 24-hour contest where mobiles can work mobiles and fixed stations. Fixed stations can work mobiles only. This is an opportunity to pick up new counties for the Counties Award, and new mobiles for the Mobile Award. If you have mobile capability, consider spending Saturday, March 15th "on the road". Remember, you can increase your score by moving from one county to another or sitting directly on a county line. County lines count for both counties. A neat way to get a multiplier of 2 for those two different counties.

Until the next issue, I look forward to meeting you on the 10-meter band and for sure in one of the upcoming contests.

ELECTION RESULTS

Gentlemen,

Below are the results of the 2002 Election for the President, VP, Secretary and four Director positions. Winners are in bold.

Linda and I independently counted the ballots and recounted if the difference between our counts were greater than 1. In case of a difference the higher total was used. No one candidate was miscounted more than 7 times, therefore the error factor in the totals below candidates is less than +7. The only election where this error factor comes into play is between Redwine and Rasmussen where the difference is 6 votes. Since both candidates were winners and the end results would be to reverse the positions, no corrective recount action was taken.

Totals do not approach the total ballots received because several ballots were marked void in specific ballots sections for multiple marks. Many voters did not vote for all offices or for the maximum allowed.

Respectively submitted

Gerald F Gross
WA6POZ #21274
10-10 Data Manager

Ballots Received: 2177

PRESIDENT

Chuck Imsande W6YLJ.....1573
Robert Jones KQ4PK.....590

VICE PRESIDENT

Mike Elliot K7BOI.....unopposed

SECRETARY

Dick Corlew NC6V.....unopposed

DIRECTOR (FOUR)

Bill Marple AA7ZW1593
Steve Rasmussen N0WY1533
Ed Redwine K5ERJ.....1527
Cliff Taylor K5FBS.....1383
David Smith K6RDK.....1296
Jerry Hein N9AVY1061

2003 Mobile Contest

1. Saturday, March 15th, 2003, 0000Z to 2359Z.
2. Open to members of 10-10 International and non-members. Award certificates to members only.
3. 28 MHz only. Any mode.
4. Fixed stations contact mobiles. Mobiles contact fixed and other mobiles.
5. Mobiles must be a true mobile. Sitting in the driveway and using the base station antenna or amplifier is not permitted. Mobile applies to vehicular, marine, aeronautical or other mode of transportation (if in doubt, check with Contest Manager for clarification). RVs in a fixed position, i.e., RV park, etc., may not use shore power. RV generators permitted only if you use generator power for your station when traveling down the highway.
6. Multiple county operation. Operation while your vehicle is parked across a county line, occupying two counties, counts as 2 counties. Marine and aeronautical mobiles must be able to establish counties of operation.
7. Exchange: Call, Name, State, 10-10 Number (if a member), and county (if applicable). Only counties in the USA, Canada, and England may be used as a multiplier.
8. Scoring: 1 point for each different station contacted, whether member or non-member. Multipliers: Fixed stations multiply the number of contacts by the number of different counties worked. Mobile stations multiply the number of contacts by the number of different counties worked, plus the number of different counties you operated from.
9. Example: Contact with K7QXG and K7PRZ in Oregon counts as 2 Contacts. Work them in 6 different counties. Multiply the 2 contacts by the 6 different counties for a total score of 12.
10. Logs: Mobile and Fixed stations must submit separate logs for each different county they operated from. Log scores will be combined by the contest manager.

Electronic logs are acceptable if the content can be opened and viewed. If not, the log is disqualified. Inquire if you are not sure. Any log in text, RTF, or with a .DOC, .WPD, or PDF extension is acceptable. Excel and Access formats will not be accepted.

Logs are due before April 1, 2003.

Send to: Mobile Contest Manager, K7QXG.
Email: k7qxcg@pcezc.com, or snail mail to 592 SE Cypress Ave., Dallas, OR 97338.

Commentary after the event will be appreciated so we can determine whether it is feasible to hold this event again in 2004. All inquiries to K7QXG only.

2003 NATIONAL CONVENTION NEWS

Preparations continue for the upcoming National convention here in San Antonio on June 26-28. The Planning Committee is going all out in their attempt to make this the best National ever. One disparaging event, however, was the news that Riley Hollingsworth, our scheduled keynote speaker, would not be able to attend. (Of course, the search is on to find a suitable replacement.)

As of November 30, registrants are as follows: AC6FU and XYL; DK7LA and XYL DJ3LA; DL1KBQ and XYL DH3KAT; K7PVZ and XYL; KA2SKO and XYL; KC4RHW and XYL KF4CKB; KC4RIY; N1DO and XYL; N3NOP and XYL N3PEK; N5PTR and XYL; WA2OIZ and XYL; WB1DBZ. Tables have been reserved for the New Waterkant, Springbok, Elmer J. Fudd Net, and Electric City Chapters.

The hotel has reported that approximately one-fourth of our contracted room-nights have now been reserved. If you haven't done so, please get your reservation in, so we can get more rooms at the special rate if we need them.

Don't forget that if you have any questions or need any help, the members of the Planning Committee as listed in the October 2002 issue of the "10-10 International News" are willing and ?able? to lend a hand.

Hope to see you here.

Cliff, K5FBS, Secretary, 10-10 International, Net, Inc.,
2003 National Convention

10-10 MEMBER PHOTO



Thanks to Dick NC6V #25057 we now have a picture of one of our newest members. Say HI to Preston W6ASP #73446.

10-10 INTERNATIONAL NEWS

DO NOT TEAR THIS PAGE FROM THE NEWS - PLEASE MAKE A PHOTOCOPY INSTEAD

10-10 INTERNATIONAL NET, INC. 2003 NATIONAL CONVENTION

SAN ANTONIO TEXAS - JUNE 26-28 2003

CONVENTION PRE-REGISTRATION/REGISTRATION: Please Print

Name: _____ Call: _____ 10X _____

Address: _____

City: _____ St: _____ Zip Code: _____ Country: _____

Email Address: _____

Number of People Attending @ \$10.00 each _____ Total \$ _____

Number for Banquet: Chicken @ \$25.00 each _____ Beef @ \$28.00 each _____ Total \$ _____

please identify special dietary needs, if any _____

Hill Country Tour @ \$28.00 each _____ (Please pre-register) Total \$ _____

San Antonio Tour @ \$18.00 each _____ (Please pre-register) Total \$ _____

ICOM 706 Tickets @ \$5.00 donation each OR 6 for \$25.00 (2 will be given away) Total \$ _____

Shirts @ \$6.50 Sizes: Small _____ Medium _____ Large _____ X-Large _____ Total \$ _____

Group Picture @ \$3.00 _____ Total \$ _____

Badges @ \$4.50 _____ Non-10Xer Name _____ Relationship _____ Total \$ _____
(Please list, on back of this form, names and relationships for other badges)

Chapter Tables @ \$10.00 each OR 2 for \$18.00 _____ (Need electrical outlet _____) Total \$ _____

TOTAL \$ _____

Mail this form and a check (Payable to JACK MOORE, 10-10 INTERNATIONAL) to: Cliff Taylor, K5FBS, 22707 Red Mountain Drive, Elmendorf, TX 78112-6034

The convention will take place at the Omni Hotel, 9821 Colonnade Blvd., San Antonio, TX 78230. Room reservations may be made for the Omni Hotel as follows: Phone: (800) 843-6664. Cut-off date for the block of reserved rooms is June 1. Afterwards rooms will be on an "as available" basis. Reservations must be made and confirmed with major credit card. Make sure that you mention 10-10 International Net, Inc. to obtain the convention price of \$79.00. This convention price will be in effect for 3 days prior to and 3 days after the convention dates. Check-in time is 12 noon unless notified to hold, or room will be released.

PRE-REGISTRATIONS will commence on November 1, 2002, and must be postmarked no later than May 27, 2003. Pre-registration prizes of a Ranger RCI-2950DX (for hams) and \$200.00 (for non-hams) will be drawn for at the banquet. You may register after May 27, but you will not be eligible for the drawing. The registration desk, for WALK-IN REGISTRATIONS and pick up of registration packets, will be open on Thursday, June 26, from 1000-1600 (10 A.M. - 4 P.M.) in the foyer by the swimming pool. Please bring a QSL card and turn it in when you register.

Chapter tables set-up will begin at 0800 (8 A.M. CST), Friday in the Grand Ballroom, Sections A, B, and C. Chapters must pre-register to obtain a table. Breakdown of tables, etc., must be done by 1700 (5 P.M. CST), Saturday.

If you are driving an RV to the convention and do not need a hook-up, parking on the hotel parking lot is permissible. If you want to park at an RV campsite, campsites are available a short distance from the hotel. Information on campsites is on the convention website or in the convention information in the 10-10 News.

To insure that you have a seat at the banquet, the convention committee highly recommends that you pre-register for the banquet. If the attendance at past banquets is any indication, there will only be a very limited supply of tickets available for late registrants.

Once again we ask all chapters to donate a prize, and, in addition, we would ask others to donate a prize(s). These can be sent to Bill Heberling, WD5EDR, 6819 Farrow Place, San Antonio, TX 78240-3428. Prizes may also be dropped off at the registration desk.

Address questions re the convention to: Ray, N5DAS, n5das@juno.com; Cliff, K5FBS, catk5fbs@aol.com; Jack, K5CC, k5cc@gvtc.com; Bill, WD5EDR, wheberling@satx.rr.com; or Will, AK5Y, ak5y@arrl.net. Information on the tours, badges, shirts, etc. can be found on the convention website, www.drhnet.com/STLHB/ or in the 10-10 News.

DO NOT TEAR THIS PAGE FROM THE NEWS - PLEASE MAKE A PHOTOCOPY INSTEAD

"GOOD AMATEUR PRACTICE" MEANS NEVER HAVING TO SAY YOU'RE SORRY

FCC Special Counsel Riley Hollingsworth has endorsed a list of several points that he feels help to define the concept of "good amateur practice." Section 97.101(a) of the Amateur Radio Service rules refers to "good engineering and good amateur practice"--considered to refer to maintaining the highest standards of engineering and on-the-air comportment. But the rule lacks specifics.

"Good amateur practice is a hard thing to define," Hollingsworth conceded. "I'd have to say it's operating with the realization that frequencies are shared, that there's going to be occasional interference and that's no reason to become hateful and paranoid."

Hollingsworth says amateurs have to realize that more people than ever are listening in, especially since September 11, 2001, and that amateurs always need to remember that "our rights end where another person's begin."

A Michigan Amateur Radio club has been credited with distributing a list of "Riley-isms" culled from Hollingsworth's various talks at conventions and hamfests and club meetings around the US. Hollingsworth--who verified that he had been cited accurately--says his various comments represent an effort to flesh out what "good amateur practice" consists of for considerate the Amateur Radio operator. According to Hollingsworth, good amateur practice means:

- ★ Giving a little ground--even if you have a right not to--in order to help preserve Amateur Radio and not cause it to get a bad name or hasten the day when it becomes obsolete.
- ★ Respecting band plans, because they make it possible for every mode to have a chance.
- ★ Being aware that we all love Amateur Radio, and there's no need to damage or disgrace it just to save face.
- ★ Keeping personal conflicts off the air. Settle your arguments on the telephone, the Internet or in person. Just keep them off the air.
- ★ Cutting a net or a contest a break, even if you don't have to and even if you have no interest whatsoever in nets or contesting.
- ★ Realizing that every right carries responsibilities, and just because you may have a right to do certain things doesn't mean it's right to do them in every circumstance.
- ★ You don't "own" or get preference to use any frequency.
- ★ Not operating so that whoever hears you becomes sorry they ever got into (or tuned in on) Amateur Radio in the first place.

Hollingsworth notes that the list "doesn't touch on a lot of other technical issues, such as using 1500 W when your signal report received is 40 over 9." Good amateur practice, he said, "just means a lot of things that can't always be quantified."--thanks to Riley Hollingsworth.

(from ARRL Letter Volume 21 No. 40)

The Amateur's Code

The Radio Amateur is

CONSIDERATE...never knowingly operates in such a way as to lessen the pleasure of others.

LOYAL...offers loyalty, encouragement and support to other amateurs, local clubs, and the American Radio Relay League, through which Amateur Radio in the United States is represented nationally and internationally.

PROGRESSIVE...with knowledge abreast of science, a well-built and efficient station and operation above reproach.

FRIENDLY...slow and patient operating when requested; friendly advice and counsel to the beginner; kindly assistance, cooperation and consideration for the interests of others. These are the hallmarks of the amateur spirit.

BALANCED...radio is an avocation, never interfering with duties owed to family, job, school or community.

PATRIOTIC...station and skill always ready for service to country and community.

Original Amateur's Code written by Paul M. Segal, W9EEA, in 1928

Thanks to Jerry WINRA #68491 for sending this in.

10-10 BROCHURES NOW AVAILABLE AT DATA MANAGER WEBSITE

The updated brochures sent to all new 10-10 members are now available at the data manager website. You can now download the INFORMATION, QSO PARTY and AWARDS brochures in PDF format. Address is www.lingerinc.com

HILL COUNTRY PICNIC SCHEDULED FOR JUNE 1 2003

For more info contact Jack K5CC at k5cc@gvvc.com

Visit the Convention Website at
www.drhnet.com/stlhb/2003.htm

TEN TEN ON THE WEB
www.ten-ten.org



OCTOBER ON THE OREGON COAST

Bob K7QXG #05956 and his XYL were headed south on the Central Oregon Coast and made contact with Roger KB7ARN #44977 and Doris KB9ARA #48212 who were headed north. They stopped and took this picture.

L to R: KB7ARN, KB9ARA and K7QXG

AND FUN WAS HAD BY ALL AT THE PAHRUMP GATHERING

Well the long anticipated event is now past. We had a wonderful time in Pahrump and the weather was grand. The only people who were a bit uncomfortable were the couple from CO. We think anything below three digits is cool weather, hi hi.

Floyd, K7POS, really enabled a lot of contacts by setting up his portable equipment in the 2nd floor meeting room so many contacts were made that would have been missed otherwise. He has a remarkable lightweight setup. The radio is 5 watts and does a great job. Thank you Floyd.

The barbecue Saturday was wonderful thanks to Doris and her OM Jim. She managed to round up enough chairs for 30 plus people which was a feat in itself. The food was great both in variety and taste. The beagle, Lucky, went around looking mournful and baying in a pitiful way at anyone who had food and would listen. Taz, the long hair Chihuahua followed Lucky hoping for the leavings. One has to see Taz to believe her. The ears look like she will go into orbit anytime.

We had a 50/50 raffle and the drawing was at the barbecue. NJ7I (formerly N0HJQ) from AZ was the winner. We had determined that half would go to the winner and the other half will be donated to the scholarship fund from the group attending as a whole. Others might consider this as a way to increase the scholarship donations. AA1NC, Ray and Sandy, KA1TLP came the longest distance from NH. They were given a nice coyote resin sculpture as a memento by KJ7RF. The youngest person present was the nine year old daughter of W7STN. She drew the raffle tickets for us. I believe she is studying to get her license.

The major event that I am grateful did not get filmed was

N7HDB being carried up a flight of stairs on Saturday in a wheelchair and again down that afternoon. I made it up alone on

Friday but with a lot of effort and recovery time for my breathing problems so KB9MJ and three others decided to form a wheelchair battalion. This is the type of friendship that is so prevalent among the ten members and especially the paperchasers.

Next year will be the big one at San Antonio and if you can possibly make it do so. I think everyone should make at least one convention or gathering or picnic just to reap the benefits of the close friendships that form. If you haven't done it plan on 2003.

I am still smiling over all the wonderful people and the good times and talks we all had. Thanks to all that came and those who were able to check into the net also. Sorry we couldn't hear any DX this time.

N7HDB supplied the doll goodies for the Chamber of Commerce Bags and goodies that were given to the non-ham wives--she also arranged for the Conference room and put in lots of time on the computer keeping folks advised of who was coming and reservations--many thanks to you, Gini from your helper--KJ7RF

73 Gini N7HDB and Doris KJ7RF

Editors note: I am sorry I was not able to make the pictures any larger. We have a publishing requirement of a minimum 300 dpi at 100%. This means if you want to send me digital photos for use in the NEWS, they must be taken at the highest possible camera setting for them to have enough data to be used.



Front L-R: KJ7RF & Taz, N6OPR, AC6FU, K7PRZ, N7VZE, K7POS, KA1TLP.
Middle L-R: AA7ZW, KB9ARA, KJ6DB, K6RDK, N6EMI, K6QWH, WU6I, W6JEA, K6UBI, N0CKW, AA1VC.
Back L-R: KE6GTR, KB9MJ, W6VY, KB7ARN, KB7RQQ, N0CKW



Gini N7HDB running the net

An-Ten-Ten-nas

INFORMATION
TO HELP YOU DECIDE
ON THE BEST ANTENNA
FOR YOU

L. B. Cebik
W4RNL #41159



In each issue of the News, we shall try to clarify a significant cluster of ideas used in antenna work. Our object is to help you make the best decisions about the antennas you buy or build without imposing our own prejudices on you. The more you understand, the better your choices will be.

No. 38: Notes on Home-Brewing 10-Meter Yagis

Over the last several columns, we have examined the electrical designs of a number of Yagis ranging from 3 to 7 elements. Along the way, we have noted some construction pointers and preferences. However, let's pause a bit to see if we can pull some of those ideas together in one place--here.

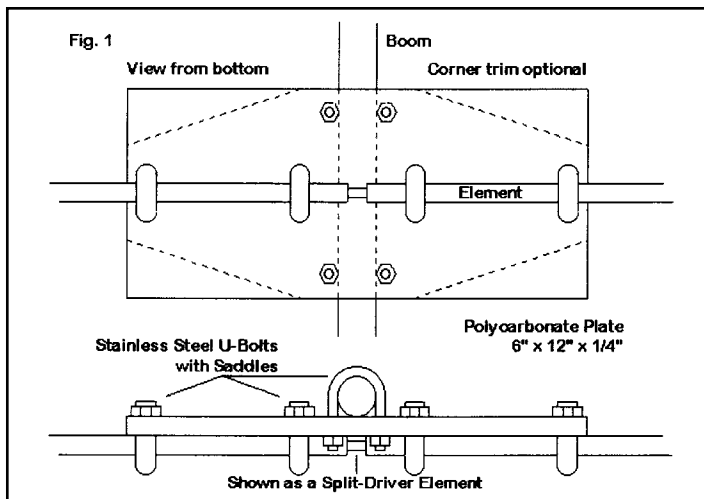
1. Element and Boom Stock: For casual and portable operations, where an antenna is not going to be in the wind for long periods of time, hardware depot aluminum tubing is usually satisfactory for elements. It comes--at least in my part of the country--in limited sizes, beginning at about 3/4" diameter. So designs using this span of tubing can rely on local purchase.

6063-T832 and 6061-T6 are the more commonly used aluminum tubing for Yagi elements. Commercial houses can use thin wall versions of this tubing for lighter elements, since they have the machinery to resize the ends for perfect lap joints. However, 0.55" to 0.58" wall thicknesses are the ones used by most hams--and these are the versions carried by vendors like Texas Towers and others. Usually, for shipping ease, the tubing comes in 6' lengths, so designs need to take this into account. If you need to put two lengths together at the center of an element to get, for example, 12' of 5/8" tubing, use a short piece (about 1') of 1/2 inch tubing inside the inner ends of both 6' pieces to form a good electrical joint and stiffen the element on its mounting. For split driven elements, use a piece of fiberglass rod.

For short boom, such as for a 2-element Yagi, 1 1/4" PVC works well, but longer than 5' or so, the material sags and is heavy. Aluminum tubing makes a good boom. For modest beams up to 12 to 14 feet long, you can nest 1.125 and 1.25 inch tubing to make a very durable boom. If you have only 6' lengths, you can stagger the sections, making sure that they meet tightly at their ends.

2. Boom-to-Element Mounting: Commercial antennas often use special assemblies to join elements to the boom. Plates are bent and curved as necessary by equipment to which the average home builder has no access. However, if you like to build antennas, consider accumulating old broken beams from hams in

your local area, even offering a few dollars to remove the "junk" from their yards. You will acquire a lot of unusable bent tubing and a number of quite unharmed boom-to-element plates (and also some boom-to-mast plates). Most of the junction assemblies will be reusable, even if you have to replace the original hardware with stainless steel nut and bolts from the local hardware depot.



For 10-meter beams, if you have to build your own boom-to-element assemblies, it is best to design for elements that are insulated from the boom. (Directly connected elements and insulated elements usually require slightly different lengths to do the same job, so do not convert one type of assembly to the other without some redesign work.) Fig. 1 shows a method that I prefer--meaning that it is certainly not the only method available.

Having used a lot of materials for the insulating plate, I have gone to polycarbonate, the generic name for Lexan. The material is UV resistant, has excellent RF properties, is exceptionally strong, and can be cut and drilled with woodworking tools. 6 by 12 inch plates of 1/4" material handle any 10-meter elements. Trimming the corners to save a little weight is feasible. Two U-bolts hold the boom and either 2 or 4 U-bolts hold the elements. The inner U-bolts are needed only if you have a split fed elements with no alignment rod running from end-to-end of the plate inside the aluminum.

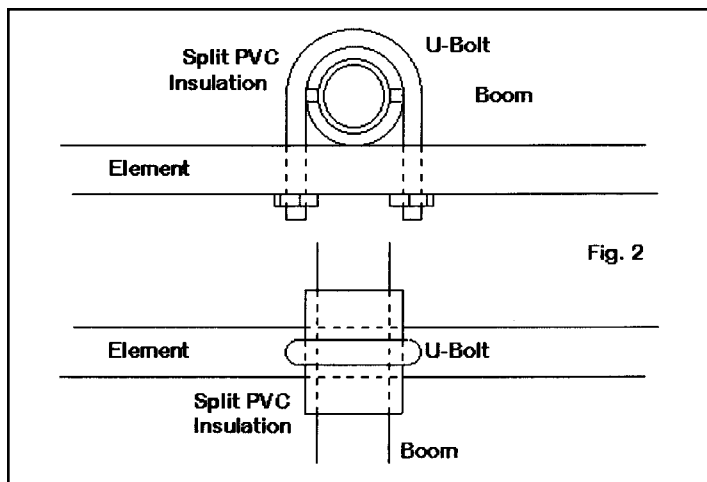
You can replicate the plate using good outdoor plywood in 1/4 or 3/8 inch thicknesses. However, plywood requires special attention both in the beginning and every year. Initially, seal the edges with a good exterior-grade fill. Then apply several coats of good spar varnish. I normally have done this to the wood before drilling U-bolt holes and then revarnished the wood, getting varnish into the holes. An annual sanding and recoating is necessary, just as it would be for a wooden boat.

Use stainless steel U-bolts, preferably with saddles. The saddles help prevent the U-bolts from collapsing the tubing when you tighten everything down. These will likely be a mail-order item. Drill the holes in the plate with precision to exactly fit the U-bolts with minimum amounts of free play (but no stress on the plate). This practice will keep your elements aligned as the wind tries to push them around.

Note also that the elements are mounted beneath the plates,

with the boom on top. This arrangement let's gravity help keep the elements level.

There is a simpler method of mounting insulated elements. It involves a single U-bolt per elements that goes around the boom and through the element. It is best to use a curved plate that matches the element curve as a keeper. Between the U-bolt and the boom is a short section of split electrical PVC that acts as an insulator. (The gray PVC used for electrical conduit has the greatest UV resistance and hence will last longer in the sun before going brittle.) The tubing used in this system should be fairly large and should have an interior piece of tubing for reinforcement. Otherwise, the element will break off right at the U-bolt. This system requires even more careful machine work for good alignment and does weaken the element. So use the scheme, outlined in Fig. 2 with caution.

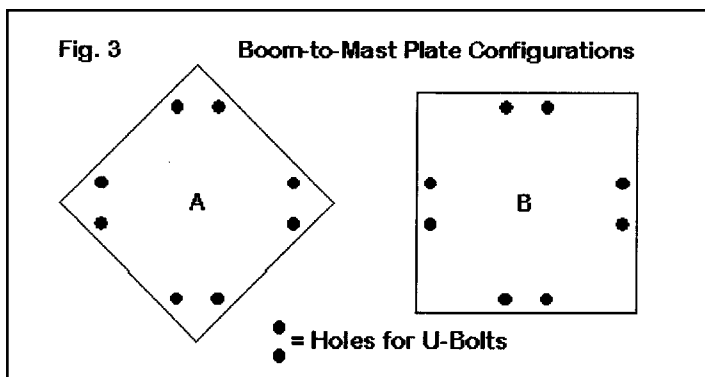


3. Boom-to-Mast Plates: For very light antennas, you can use a non-metallic plate for the boom-to-mast junction. Again, plywood--with the proper treatment--can also do the job. However, I prefer metal plates either 1/4 or 3/8 inch thick, depending on the weight of the antenna and the diameters of both the boom and the mast. Predrilled plates are available from mail order sources, as is stock that lets you drill your own custom pattern of holes. The object of using a metal plate is to ensure a good electrical bond between the boom and the mast (and downward) so that the entire assembly (except for the elements) is a ground potential for bleeding charges off the antenna support system.

For the larger U-bolts in this assembly, you can use saddle-types or you might wish to use muffler-type clamps. These U-bolt assemblies have a saddle with edges that some folks believe grips

the boom and the mast better. However, if you do use these auto store components, be certain that all of the pieces are stainless steel. It will take a pair of U-bolts for the mast and another pair for the boom.

You have a choice of shapes for the plate: a square (or rectangle) or a diamond. In principle, the diamond conserves the most weight and material. However, be certain that there is enough material beyond the U-bolt holes in a diamond plate to ensure that the material will not break under stress. Fig. 3 will reveal the areas of potential weakness.



Alternatively, you might use for this assembly one of those commercially made fixtures with its complex bends and shapings to provide a maximum grip between the boom and the mast. Also, be sure the mount this fixture at the center of weight of the antenna boom.

4. A Note About Stainless Steel Hardware: For antenna work, use stainless steel hardware everywhere. Make no exceptions. Although once hard to find, stainless steel nuts, bolts, U-bolts, and other fixtures are easy to locate at hardware depots. Do not use aluminum hardware, as it is very weak. All other hardware will create a bi-metallic junction that will corrode one or both of the pieces joined. Stainless steel has proven to be the most successful hardware for antenna jobs ranging from joining element sections of tubing to boom-to-mast plate mountings.

The construction methods that we have noted will run the cost of a home brew Yagi only to about twice the cost of using junk-box components. However, the final cost will still be less than 1/3 the cost of a commercially made antenna--and it will last as long or longer than the commercial assembly. Even if the Yagi is home brew, if it is worth making, it is worth making well. Nothing is more frustrating than breaking a beam in the wind during a world-wide band opening.

ARE YOU REALLY INTERESTED IN ANTENNAS ?

L.B. Cebik has been writing a column about antennas for the 10-10 News for the past few years. 30 issues of this material have been compiled into one book which is available for the low price of \$12.95 USD plus shipping and handling (US Zip Codes \$5 USD - all others \$8 USD). You may pay by Check, Money Order or IRC's (\$1 USD per IRC). VISA and Mastercard are also acceptable. Please provide Card Number, Expiration Date, Name on Card, Phone Number and signature of Cardholder (please note that our credit card agent is RSVP of Omaha, NE). Orders can be made via mail to: **10-10 INTERNATIONAL NET, INC., 643 N 98TH ST #142, OMAHA NE 68114-2342** or by FAX to 402-891-2481. *All profits from the sale of this book go to the 10-10 Scholarship Foundation.*

CHAPTER COORDINATOR'S COLUMN

by Dave Smith, K6RDK #65812



Newly Affiliated: Gold City Chapter, Major League Baseball

Reports Due This Quarter: 10-Bar-X, All America City, Appalachian Mountain, Bauxite, Cast Iron Tower, Chesapeake Bay, City of Melbourne, Crazy Eights, Dick Bass Memorial (Michiana), Down Under, Edmonton Area 10-10ers, Kansas Trails, Laurel Mancunium, Restoration Project, River City/Cameilla Capital

Reports Past Due: Golden Bear, Palmetto Chapter, Samuel Clemens/King Arthurs Court, Sky Blue Waters/Tin Lizzey

In Extremis: Peshtigo Fire, Twin Cities, Twin Tiers/Chenango Canal

REMINDER - To remain affiliated with 10-10 International, all chapters must fill a chapter report at least once each year. This information is used to update the 10-10 Awards guide and the monthly Guide updates. We don't want the membership wasting their time and money on a chapter that is no longer active. If the name of your chapter appears above, please advise the Chapter Coordinator if there has been a change in status of the chapter.

Chapters wishing to file the Quarterly Report on line may do so; email me (k6rdk@arrl.net) for the link. Once the initial form is filled out I will make a customized form with your default information fields already populated. If there are any changes just make them and let me know in the comments and I will change the form.

.....

Newly Affiliated:

Gold City Chapter - Gold City Chapter was affiliated on 09 Oct 02, the CH is Wallace Butler N4WAB #65133 and the CM is Phil Heaton, N4BBQ #66137. The weekly net meets on Wed at 0001 UTC on 28.425 MHz.

Basic membership; Submit the membership application form with Name, Call Sign, QTH, 10-10 Number, Email address and Gold City Member Worked (FM, SQ or IQ) to Wallace Butler, N4WAB, 7942 Auraria Rd., Dawsonville, GA 30534. The certificate fees are \$3 US and \$5 DX or numbers only just send SASE.

For further information visit their web site at <http://168.8.96.77/>
Major League Baseball - Major League Baseball was affiliated on 12 Nov 02, the CH is Robert Farrow, N6OPR #45715 and the CM is John Barnett, KC2GCL #72143 who also acts as their net control station. There are two nets that meet Sun/Mon at 1800/1500 UTC on 28.830/28.425 MHz.

The chapter is open to any one with a 10-10 number. Basic membership; submit Call, Name, 10-10 Number, State and 10-10 dues info to the CM via email kc2gcl@aol.net or by snail mail to Robert Farrow N6OPR, 14814 Gagely Dr, La Mirada, CA 90638. There are no certificates at this time.

For further information visit their web site at <http://www.qrzdx.com/mlb>

Chapter News:

Arizona Desert Chapter - The chapter membership continues to grow with additions from Alaska and Hawaii. The chapter provided Callbook 2003 CD ROMs to members wishing to have the last copy which will be a collector's item. We're sorry to see that the folks, who publish the Flying Horse Callbook, have decided to stop publishing it. The Callbook has been a reference standard for Amateur Radio since the 1920s. The semiannual picnics are still being held.

Boomtown - The CM of Boomtown now accepts email upgrades. Ed's email address is ed_cisse_neal@yahoo.com

Colorado Centennial - Boston Seal cut-off date was 01 Nov. There were 30 Pahrump Seals issued at the Pahrump Gathering this year which are collectable.

Cradle of Confederacy - The Cradle of Confederacy Chapter holds two special events each year. First is to commemorate Jefferson Davis taking the oath of office as first president, Confederate States of America on Feb. 18, 1861 in Montgomery Alabama and subsequent inauguration on Feb. 22, 1861. The second event is in June to commemorate Jefferson Davis' June 3, 1808 birth.

The 2003 CSAF inauguration event will run from 0001Z 14 Feb. to 2359Z 20 Feb. 2003. Contact with any Cradle of Confederacy Charter, Local Charter or Local Member (C, LC or L) is an instant qualifier for the C of C numbered certificate. Call frequency 28.350 MHz. Send QSL information with \$2.00 to K4OZN, 7173 Timbermill Drive, Montgomery AL 36117-7405. Event QSL card not available.

The 2003 Jeff Davis birthday event will run from 0001Z May 30 to 2359Z June 5, 2003. Contact with any Cradle of Confederacy Charter, Local Charter or Local Member (C, LC or L) is an instant qualifier for the C of C numbered certificate. Call frequency 28.350 Mhz. Send QSL information with \$2.00 to K4OZN 7173 Timbermill Drive, Montgomery AL 36117-7405. Event QSL card not available.

Gold City Chapter - Starting in January, there will be a new monthly special. The database will randomly choose five members as Gold Nuggets. Each one will have a different point value (depending on their purity). The only people that will know about these folks will be the individuals themselves.

It will be up to you gold diggers to dig them out. You can only claim them once in that month for points.

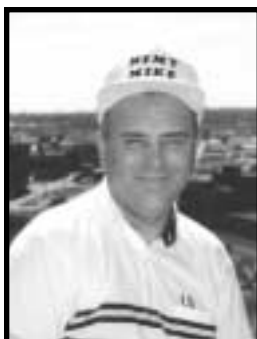
These Gold Nuggets will be instructed to not tell they are a special and you will have to ask them if they are a current special.

Lake Geneva - The Lake Geneva Chapter is saddened to report that Dr. Marcel Bonnafé, F6EAK, ex-HB9BMM, #25916, passed away on 23 August 2002, at home in Verrières le Buisson, south of Paris, at the age of 80. Marcel is survived by his wife, Christiane, and two daughters, Agnès et Béatrice.



Picture taken 13-Mar 1983 outside of ITU HQ Geneva - from left to right:
Ted Vogel HB9OP #22907 (sk), Marcel Bonnafé F6EAK #25916 (sk)
and Dexter Anderson W4KM #06871

PAGE 13



Mike Davidson
N5MT #24949

December 8, 2002

The only recognized amateur radio station operating from North Korea **P5/4L4FN** Ed #72722, has been shutdown effective November 22, 2002. Ed was called to a meeting with the P5 Radio Regulation Board when he was asked to quit all radio activity. He spent the next day taking down his antennas and packing boxes. That afternoon a government official came by and sealed all the boxes. Ed is going on vacation in a few days and he will take everything with him out of North Korea.

I talked with Bruce **KK5DO** #65027, who is Ed's QSL manager, about what Ed has accomplished. Bruce sent Ed a computer logging program so that all contacts would be computerized and sent to Bruce for QSL replies. Ed logged 16,194 contacts on his computer and Bruce has sent out eleven thousand QSL cards so far. Ed made most of his contacts on fifteen but he worked 2,818 contacts on ten meters, of which 1,682 were in North America. I helped Ed get his 10-10 membership and he was the only operator to give out a 10-10 number from North Korea. As you would expect, Ed's operating efforts have allowed many thousands to confirm North Korea, and put many DX'ers back to a worked all country status of Number One Honor Roll. Many thanks to Ed who will be remembered for his tenacity to get permission to operate and to give out the rarest one!

As I write this article, I have two people that have just submitted **P5/4L4FN** cards for 10-10 country credit.

A poll was taken last month to determine which countries are the **Most Wanted**. Here are the top ten: **VP6D** Ducie Isl., **P5** North Korea, **VU4** Andaman Isl., **BS7** Scarborough Reef, **VU7** Laccadive Isl., **VP8SA** S.Sandwich Isl., **7O** Yemen, **3Y8P** Peter Isl., **FR/J** Juan de Nova Isl., **KP5** Desecheo Isl. Of these countries, there has been 10-10 activity from all but **VU4**, **BS7**, **VU7**, and **FR/J**.

3C Equatorial Guinea. Vitaly **VE6JO** #35994, has received the callsign **3C2MV**. He is operating from the capital city Malabo located on Bioko Island (IOTA AF-010). Vitaly was delayed three weeks while he waited on a visa. He was expected to start in early November but finally

got on the air November 21st. He is making lots of contacts by himself and he was a great catch when he gave me a first 10-10 country on ten SSB. He could stay until December 13th. **This will make the 10-10 country count go up to 308 countries. Thirty three countries are waiting to be activated and have never had any 10-10 activity as of December 2002.**

The 28555 DX Net continues each Sunday, at 1400-1600Z for the winter season. Austria, Belarus, Bulgaria, Brazil, Canada, Czech Republic, England, Germany, Italy, Norway, Northern Ireland, Romania, Spain, Switzerland and South Africa have checked in this past quarter.

QSL's received for new 10-10 countries: CY9DH St. Paul Island. James **VE9DH** #72121 was active in July. Received a QSL from **W7XU** for a new one. **VP6DI Ducie Island** by **VR6TC** Tom #73104 and **VR6MW** Miralda #50434. **XR0W San Felix Isl.** by Joe **KO4RR** #46176. **VP8GEO S. Georgia** by Ralph **K0IR** #2609. **P5/4L4FN North Korea** by Ed #72722, worked him September 22nd. **OH0/OH3TY** Aland Isl. by Ben #72703. Ben used the call **OH0HEY** in the CQWW RTTY contest.

HV Vatican. Stefano **IK0OER** #62293 was active from the Vatican as **HV5PUL** for a few days. He confirmed he did give out his 10-10 number at least once, so maybe someone will confirm the Vatican for a new 10-10 country! They only transmit two times a year in May and November.

JW Svalbard. Tom **LA7VK** #72716 flies into Svalbard for a 24-hour stay about once a month. He then returns to Norway. His last trip on December 1st was very poor for ten meter propagation. Expect Tom in January 2003 for a two day stay on a weekend. QSL to **LA7VK**.

S9 Sao Tome. Charles **S9SS** #16955, (ex. **KY4P**) continues to be active on ten meter SSB & some CW. He likes to work on 28377 from 1900-2100utc. QSL to **N4JR**.

ZS6 South Africa and **3DA0CF Swaziland.** Frosty **ZS6WPX/K5LBU** #51322, was again in Africa during the Thanksgiving holidays using the call **3DA0CF**. He used the same call in July 2002. Frosty made 900 contacts this trip on several bands. His friend, Andre **ZS6WPX** is now applying for his 10-10 membership.

Upcoming DX & New 10-10 Activity:

XU Cambodia. Dick **N6FF** #24616, is now active as **XU7ACB** from December 3-18th. He has been active on RTTY/PSK31/CW so far on 80, 40, & 20. QSL to **N6FF**. (Editor's Note: Please advise if you get him for 10-10, as there has never been any 10-10 activity from Cambodia.)

9Q Dem.Rep. of Congo. Patrick, **9Q1A (F6BLQ)** #66013) will participate in the ARRL 10 Meter Contest as **9S1X** (SSB only), then Pat and Nicole **9Q1YL** (ex. **TU5NC**

#66012) will leave Kinshasa. In early January 2003, they will move to Matadi, D.R. Congo, where they plan to be active as 9Q1A & 9Q1YL with wire and vertical antennas at first, with beams to follow. QSL to F2YT #22871.

DP1 Antarctica. Felix **DL5XL** #55519, will be at a German Antarctic research base from March through November 2003. His callsign will be DP1POL when he is not working as a radio operator and electronics engineer at the base which is located on the Ekstroem Shelf Ice, Atka Bay, at 70°39'S, 08°15'W. QSL to DL1ZBO.

FS French St. Martin. Look for Ann **W2AZK** #70464, Mike **WA2VUN** #12733 and others to sign FS/home-call from December 4-11th. Website: <http://www.njdx.org>.

HR Honduras. Gerard **F2JD** #63443, will be in Honduras from December 10 to March 3, 2003 and will operate as HR5/F2JD from 160-6 Mtr on SSB and CW. He will be based at La Entrada de Copan, but he may also operate from some IOTA islands. QSL to F6AJA.

J3 Grenada. Ann Santos **WA1S** #48144, operated as J38AA from November 12-22nd. QSL to WA1S.

P40MR Aruba. Martin **VE3MR** #40238, will be active from now until April 2003. QSL to VE3MR.

TI9 Cocos Island. Jose **TI2JJP** #45800, will be using the call TI9JJP from December 10-25th.

TO2 Guadeloupe Island. Jack **F6HMJ** #52711, will be active as TO2FG from the main island (IOTA NA-102), for a month starting December 15th and ending on January 15th. He expects to operate on all HF bands. QSL to F6HMJ.

V31JP Belize. Joe **K8JP** #22977 will return to Belize November 20th through April 2003. QSL to KA9WON.

YI IRAQ. Peter **ON6TT** #51565, was able to operate as **YI1BGD** #38353 from a club station in Bagdad. I wonder if anyone remembers that YI1BGD has a 10-10 number! Peter recently operated from **Afghanistan** as YAST.

ZL7C Chatham Island OC-038 took place from October 17-28th. About a dozen operators with Reinhard **DF4TD** #21100, Murray **ZL1CN** #10048, and Ken Holdom **ZL4HU** #37889 were the only 10-10 members.

Propagation: The peak of this Solar Cycle was 23 months ago and we are coming to the end of what I call Phase II. Phase II occurs when we have the best propagation with a flux above 125. During our Winter months, we have the best DX here in the USA, until the Spring of 2003. My prediction is for the Solar flux to range from **125-175** the next four to six months.

Cycle 23 is now 5 years old. The flux continues to stay moderate as this cycle grows older but expect 2002 to be a better year than 2003. **On December 8th, the Solar flux**

was 151 the A index 15 and K index 2, which is much lower than the flux numbers three months ago. Solar activity has been less frequent the past month which means the average flux continues to fall. One year from now in December 2003, I expect a Solar flux range of 100-130.

Expect the best conditions on December 3-5 & 30-31, 2003 January 1-2 & 27-29, February 23-26, & March 22-24. USA stations, expect a 75% chance of DX to Asia, Europe or Africa and a 50% chance into S. America in the mid-afternoon. Expect a 3-5% chance of Long Path into Asia or Europe, starting at sundown for central USA. The beacons from **28.175-28.300** will tell you what is open, especially 28.200. Good luck.

IOTA: North America: ZF Cayman Islands NA-016. Pete **N2LM** #72434, was active as ZF2PD until December 1st on CW/SSB.

FS St Martin NA-105. Ann **W2AZK** #70464, & Mike **WA2VUN** #12733 until December 11th.

KL7 Alaska NA-037. Shemya Isl. by John **KL7JR** #43374 on Sundays 28.500 after 1600Z.

Oceania: V7 Marshall Islands OC-028. Bruce **AC4G** #49089, has been active as V73CW.

Europe: GU Guernsey. EU-114 Justin **G4TSH** #42972, used the call GU4TSH and MU5X from the club station.

New DX members September to December 2002: 02654 VE3ZT was VE3BBH, 13728 KL7TF was K1TF, 38920 VK2BW was VK3TI, 73415 YB2OBL, 73416 DL0KAC, 73417 DK0HHC, 73418 DK0DWK, 73419 DL7PP, 73420 DL1YC, 73421 DJ5OU, 73422 YB9AY, 73423 JE4BTE, 73437 KP4HLR, 73530 NH7CJ, 73570 AH6RE, and 73595 KH6NZ.

10-10 Bar Awards: Congratulations to Carl **PY2DBU** #08264 for his Bar 4900, Evillo **KH6DRT** #33751 for Bar 2800, Fred **VA7TEN** #24752 for Bar 2600 and Alan **VE4ALN** for Bar 2200.

Countries Award: There are 589 basic certificates issued; I processed three basic certificates and seven upgrades this quarter. I can send a list of your country credits by email or by regular mail with an SASE with one stamp.

Thanks to the on-line DX List, QRZ-DX, Lee KH6BZF #08888 & Ohio/Penn DX Bulletins. Send photos to Mike Davidson, 3518 Bellefontaine, Houston, TX 77025 USA Email: **N5MT@aol.com**

DX IS! 73 Mike Davidson N5MT #24949

K4E - EGMONT KEY/LIGHTHOUSE EXPEDITION NOV 9-10, 2002

Back in August 2002, at a little ham picnic, Mark N9MIU (67423) spoke the fateful words: "Let's go put Egmont on the air!"

Egmont Key is an island at the mouth of Tampa Bay; accessible only by boat. It is a State Park and Wildlife Sanctuary now, inhabited only by the Park Ranger, and the Tampa Bay Pilots who assist the freighters in and out of the bay, as well as the numerous gopher turtles and birds who call Egmont Key home. The park is open for hiking, sun-bathing and picnics during daylight hours only and there are ferries and shuttles from nearby areas to bring visitors to the island. Facilities are extremely limited to one non-flush toilet and non-potable water only. Everything must be brought in and taken out again...there are no trashcans on the island.



The lighthouse was originally erected in May, 1848; hurricanes damaged the lighthouse in 1848 and 1852, and it was later rebuilt. It is a working lighthouse, and the light sweeps around every 15 seconds. For more information on Egmont check <http://www.funandsun.com/parks/EgmontKey/egmontkey.html>



By Aug 31, our first meeting was held, with 13 people attending. We planned to spend one night on the island, so had to secure permission from the Park Ranger, as the park closed at sundown. Several days later, we got word that our request for the special callsign K4E was approved, and we were off and running.



Saturday Morning, Nov 9, 12 of us took off for Egmont in two VERY fully-loaded 31 ft boats at near dead-low tide...and within minutes, the first boat went aground on the shoals. After some snappy teamwork, we were soon on our way again, headed for the island and eager to start the main operation. The five 10-10 members aboard were: Mark(N9MIU), Leslie(WA4EEZ), Leslie's OM Roger(K4SHI), Dave(KR4U), and Doug(WB2LEZ).



Since the tide was dead-low, the dock at Egmont was about 4 feet above our boat, and required some major lifting and teamwork to off-load the equipment. The Park Ranger was there to help and also helped load our supplies on a trailer and drove it to the site. Without that help, we would have had many long difficult trips to get everything up the beach road, losing precious time.

We soon got 3 stations set up, antennas erected and were on the air around noon...for a few minutes... We were interfering with

10-10 INTERNATIONAL NEWS

each other, so lost more time repositioning the antennas...altogether using 800 feet of coax. The two IC-706 MkII's and the Ten-Tec Jupiter performed flawlessly, although some unwanted solar activity made operations difficult on Saturday. We had operations on 20M thru 220mHz, SSB and CW on Saturday and added 40M on Sunday morning. 10 meter activity was spotty Saturday due to solar activity, but Sunday the band was extremely busy! However, due to the low tides and concerns over getting back home before dark, we had to pack up and leave earlier than planned.

Our original plan called for putting Egmont Key/Lighthouse back on the air-it had not been activated for about 12 years. That was accomplished! The only other goal we had was to have fun playing radio. That too was accomplished, in spades!!

Notes:

It IS possible to wake up at 4am to go on a Dxpedition.

It is much more difficult to stay awake at 4am the next day.

The bands WILL fold just when you need the activity to stay awake.

Boats will tend to run aground at dead-low tide. Dinghies tend to slip away at any time they choose. They choose quite often.

Radio equipment is heavy. Very. Lots of radio equipment is very, very heavy.

800 feet of coax is enough. Just enough.

45-year old jungle hammocks tend to disintegrate at 2am. They then make good ground covers. In between, they make a kind of slant-board.

It IS possible to sleep on a picnic bench. For a few minutes.

Generators are noisy. See above.

When the wind blows a forgotten half-cup of coffee onto the back of the sleeping person on the bench, that person WILL wake up the entire camp with their loud exclamations.

Tepid canned iced tea tastes delicious. Really.

Tepid coffee tastes delicious too. Not.

You do NOT need a plate and fork to eat pancakes, syrup and sausage. I had no idea.

Dirt does not taste too bad. Somehow, purple ketchup does.

It is OK to not take a bath for two days. Three days is pushing it.

The lantern WILL run out of fuel around 3am. No one cares.

Some bugs do not bite. Some do.

It IS possible to erect an entire screen room over a working station without the operators even noticing.

Paper logs will not work. Laptops and logging software will.

There are morning people and there are the others. Do NOT talk to the non-morning people before 10 am. Ever.

Just when the band gets going, there WILL be a solar event.

Solar events actually ENJOY occurring during Dxpeditions.

Just when the band gets going, the Captain says "we need to leave-NOW" (corollary to solar event above)

Island DXpeditions are fun!
DEFINITELY!

Leslie Johnson, WA4EEZ





Silent Keys

Compiled and listed by
Ruth Bartholomew NØKDB #48715

It is with sorrow that we note the following 10-10 members who are now Silent Keys. We extend our sincere condolences to the families and friends of these SK members whose calls and 10-10 number will forever be kept in the records of the 10-10 Net.

00384.....W4AYM.....Kelly Jones.....Mobile, AL
01094.....W6MQK.....John Maver.....Pasadena, CA
01269.....WA4WDN.....Larry Campbell.....Winchester, TN
02881.....W0NG.....Glenn Bartoo.....St. Paul, MN
03105.....W1YYJ.....Horace Snow.....Danvers, MA
03156.....WB9EMH.....Dick Dayton.....Bedford, IN
03528.....W8LEW.....Lewis Buck.....Hamilton, OH
04667.....W5MYA.....Michael Badolato.....Colleyville, TX
05168.....W1WS.....Connie Owens.....Eliot, ME
06802.....WA4EJA.....Norman Dennis.....Savannah, GA
09618.....W0WW.....Bennett Muir.....Englewood, CO
09929.....KL7Y.....Dan Robbins.....Wasilla, AK
11382.....W9NWX.....LeRoy LaBardi.....Edwardsville, IL
11910.....KB6V.....George Watts.....Redondo Beach, CA
12071.....W1KHL.....Calvin Bennett.....Wilton, CT
14886.....K9WG.....William Golden.....Pekin, IN
16180.....KB8HO.....Gregory Pawlowski.....Northville, MI
16300.....K4DSK.....George Dennis.....Hopkins, SC
16896.....W9GSB.....Llewelyn Williams.....Cary, IL
18024.....WB6SKV.....Harold Donaldson.....Fair Oaks, CA
18929.....K8ABF.....Russell Bloss.....Cincinnati, OH
18990.....KD8YZ.....James Barker.....Sidney, OH
19034.....ZL2GJ.....Bob Pearce.....Martinborough, NZ
20321.....KO7H.....Quenton Tregeagle.....Salt Lake City, UT
20387.....W5HHB.....Gus Guillot.....Nederland, TX
22315.....W9URY.....Richard Shafer.....Green Bay, WI
22365.....WB9JBH.....Jim Jackson.....Anderson, IN
22699.....W1ABE.....Lester Kendall.....Newport, RI
23269.....W6KVA.....Jim Jensen.....San Carlos, CA
25916.....F6EAK.....Marcel Bonnafé.....Verrieres-Le-Buisson, France
25988.....GM0LYM.....Alex Donaldson.....Glasgow, Scotland
26149.....KJ6DJ.....William Johnston.....Grass Valley, CA
26430.....VK4SJM.....Sandra Murray.....Manly, QLD, Australia
26640.....N5BLK.....Gene Willbanks.....Pollock, LA
26975.....N7BHZ.....Joseph Higgins.....Las Vegas, NV
26986.....AD7N.....Jim Simpson.....Cour D'Alene, ID
27085.....WD0GX1.....Wayne Castor.....Carthage, MO
27864.....K7MAE.....Mae Hipp.....Sun Valley, NV
27865.....W7HUS.....Harry Hendrick.....Reno, NV
28336.....W4WMQ.....Murphy Ratterree.....Rock Hill, SC
30058.....WB7QFE.....Carol Greenwood.....Wolf Point, MT
30516.....NG3X.....Harry Sieber, Jr.....Wrightsville, PA
30683.....W6ZYR.....Frank Maul.....Fresno, CA
31512.....K0GRD.....Tom Omohundro.....St. Louis, MO
31708.....K2RXB.....David Apfelbaum.....Delray Beach, FL

32747.....WO7C.....Ruby Peterson.....Spokane, WA
33047.....W0SBN.....Earl Rolf.....Pratt, KS
34810.....WA2EZV.....Duane Church.....Coram, NY
34905.....KA0LCU.....Harold Tracy.....Ohio City, CO
34978.....N0DES.....Alice Hathaway.....Pueblo, CO
35471.....KI8O.....Ernest Hudson.....Dayton, OH
35537.....N3CFO.....Victor Sinopoli.....Willow Street, PA
37955.....KD0IR.....Carl Widell, Sr.....Webster Groves, MO
38700.....W2VLH.....Edward Bowley.....Elmhurst, NY
38859.....W1SYD.....Tom Van Alstyne.....Brunswick, GA
39248.....K5FQN.....Douglas McKay.....Rayville, TX
40039.....KF5EA.....Henri La Salle.....New Iberia, LA
40537.....KA2ARB.....Harry Slates.....Westfield, NJ
41109.....N4KZR.....Macon Ellis.....Yorktown, VA
41134.....WD4PJN.....Clarence Benner.....Orlando, FL
41354.....W8IIO.....Walter Keck.....New Richmond, OH
41705.....K1LII.....Chester Tammany.....Rumford, RI
43319.....K9OVZ.....Eugene Boyes.....DeKalb, IL
43353.....N9JH.....Ronald Howe.....Plover, WI
43786.....K7SAJ.....Keith Anderson.....Pleasant Grove, UT
44212.....WA4KXO.....James Robb.....Chapin, SC
44533.....W8OUW.....Arkley Bruce.....Heath, OH
45791.....AA6UN.....Gene Petrick.....Gasquet, CA
46123.....WK3S.....Jay Nugent.....Fort Collins, CO
46809.....KA8MAQ.....Donald Kinney.....Newark, OH
47781.....WB8KLP.....Richard Haney.....Cincinnati, OH
49092.....N4TZP.....Jean Cebik.....Knoxville, TN
53730.....WB6STR.....Randy Finuf.....Idaho Falls, ID
54475.....W4NMI.....William Price.....Soddy Daisy, TN
55089.....N1FZG.....Hugh Evans.....Cos Cob, CT
55151.....KA4ERE.....Rover Brown.....Daphne, AL
55426.....KB8GHP.....Kevin Croll.....Cincinnati, OH
56144.....K0VEB.....Charles Waldron.....Sun City West, AZ
59256.....KB7MNH.....Charles Shoemaker.....Chino Valley, AZ
60584.....K3CRC.....William Behrends.....Jermyn, PA
60797.....W4UFQ.....Dale Harridge.....Madison, GA
61688.....N1UGT.....Daniel Quinn.....Lynn, MA
62928.....KB9HIO.....Mary Rose.....Fort Wayne, IN
63570.....WB4DQF.....William Whitlock.....Front Royal, VA
67152.....N1TDF.....William Sullivan.....Randolph, MA
67220.....N4AMH.....Mike Kappes.....Alexandria, KY
67490.....N9XXZ.....Wayne Wilzbacher.....Evansville, IN
70007.....NC4ML.....Michael Lamb.....Seagrove, NC
70890.....W2BJJ.....Betty Johnson.....Hasbrouck Hgts, NJ
70926.....W7SCW.....Stephen Walen.....Salem, OR
72942.....KC1JV.....Edward Mathews.....Kensington, CT

Please send silent key information to

Ruth Bartholomew, NØKDB

HC65 - Box 102A, Sullivan MO 63080-9204

or email n0kdb@fidnet.com

Please include Call, 10-10 Number, Name, City and State,
and Date of Death

(if known - if not, please estimate as close as possible)

NOTE: 10-10 obtains SK Listings from various sources and errors could appear as many times they cannot be verified. We apologize for any errors. Please notify the SK Manager if any errors are found.

New Daily Contact Routine Added to the Win1010 Certificate Chaser Program

When the Win1010 Certificate Chaser module was written, there was no provision for the Daily Contact programs. A new routine recently added to Win1010 (Version 2.3) provides support for all the Daily Contact chapters. This routine works in conjunction with the Daily Log module to provide reports on the number of daily chapter contacts and points for a range of dates as well as the supporting log for these contacts/points. Also provided is a list of unique calls and last worked dates for all chapter contacts during the search period. For the birthday points, there is a routine that will search a new Birthday Database and the Daily Log for all chapter birthdays worked during a range of dates. Provisions are also included for the Steel City Birthday points which are calculated differently from the other birthday points. In addition to the various displays, a printout and ASCII files are available.

The Win1010 Certificate Chaser is one of the four modules in the Win1010 Suite. Full information on the Win1010 programs can be seen at <http://hds.net> or via email from the author, Jim Hardy, K4HAV at k4hav@hds.net or via mail at PO Box 7304, Tifton, GA 31793. The new update is available free at the <http://hds.net/win1010dl.htm> download web page or can be purchased by registered users on a CD for \$10 postpaid, which will contain the full program with updated databases and also the weekly updated FCC Amateur Radio Database.

Potential new users can download a demo program with a 25 record limit from the download web page or purchase the demo program on a CD for \$10 which can be applied to the purchase price later.

Change in distribution of XXIP

XXIP will no longer be delivered via diskettes. Usage during the last 6 months has produced fewer than 6 copies being delivered. In place of diskettes and as an option to CD-ROM, an electronic delivery via download is now provided. XXIP will be produced at the end of every month. For one flat fee of \$20, between now and June 2003, you can download XXIP every month until December 2003. Contact the Data Manager at [wa6poz@arrl.net](mailto:<wa6poz@arrl.net>).

Now here's an odd little contest I thought you might all like to look up and maybe try your hand at. I've heard some of you talking about strange antennas you have made - so here is your chance to "pony up" and prove it!!! - editor

"KØS" Kurt Sterba Strange Antenna Challenge

PURPOSES OF EVENT:

1. Present hams the opportunity to work stations (ourselves) who are using "strange" antennas, such as metal folding chairs, and painting easels -- anything *except* wires or pipes.
2. Obtain a QSL Certificate which has an image of the "strange" antenna we used to work them.
3. Help demonstrate you don't need an 8-element beam up one full wavelength to make contacts and have fun doing so.
4. Demonstrate during emergencies, a make-shift antenna *will* allow one to communicate!
5. To (we hope) generate local media coverage as a result of our news releases regarding the event.

EVENT TIMES:

START May 10th, 2003, 10 am (central) - Sat
END May 11th, 2003, 7 pm (central) - Sun

STARTING FREQ.:

28.500 +/- 20kHz, May 10th, at 10 am (central)

QSL CERTIFICATE:

We will provide a QSL Certificate for stations that send us a SASE. On this certificate will be an image of the antenna we used when working them.

10-10 NUMBERS:

I am a 10-10 member, as are others members of our club. This isn't being organized with this as the focal point, however, we will certainly exchange 10-10 numbers when appropriate.

EXCHANGE INFORMATION:

This is a little more extensive than some events, but not too bad:

OUR ANTENNA
CALL SIGN
DATE / UTC
MHZ.
OTHER STATION'S QTH
RST - THEM
RST - US
MODE
COMMENTS - if any.

73 and QSL SASE to Erik Weaver N0EW #73252
4857 E Farm Road #136
Springfield, MO 65809

n0ew@arrl.net

Net Manager NET NEWS

BILL MARPLE
AA7ZW #62075



July and August started off quite average for this time of year, and then September kicked in beautifully. The number of stations checking in began to increase considerably, and now is back to normal. There have been as many as 57 stations checking in during this quarter, with the average being around 35.

There are still occasions when stations are holding a QSO on the net frequency while the nets are in progress. This is causing a problem for the net control stations, as they have to try and pick out the call signs of stations checking in with them. Please, do not hold side QSO's during the nets. If you need to contact another station for other than net purposes, please QSY off net frequency. Otherwise, ask for a contact, and then make your call.

The time has come again to start thinking about selecting a net control station of the year for 2002. It is your call as to who should be awarded this honor, so start thinking about who you would like to nominate. You may send your selection to me via e-mail, or snail mail, but not on the air. It really makes a difference having the membership vote for the net controller that they feel has done the most for the nets during the year. All of our net controllers do a great job, and it is always an honor to award one of them with this award. Send your vote to me at aa7zw@arrl.net. No attachments please, I will not open them.

As usual, I want to thank all of our members who so loyally check in on the nets. All of the net officials appreciate your dedication and loyalty to our nets, and especially all those who regularly act as relay stations. Without your help, we would surely have fewer stations on the nets, and that would mean fewer exchanges of information. Also, we are currently qualifying several new members on almost every net. This is the backbone of our operation, so again I thank you all for this effort.

Until next issue, I wish you good DX, and 73

Editor's note: There will be no Quarterly Net Report this issue as Bill's car was broken into and his computer was stolen. He will be working with his net controllers attempting to rebuild the data but that could not be done in time enough to make this publication. He will try to have everything back together in time for the next edition.

ANNIVERSARY QSO PARTY

DESCRIPTION

A yearlong event that allows entrants that make legal 10-10 contacts with members that have 10-10's anniversary year contained in their membership number to submit a log of these contacts and earn recognition for their effort.

As example: 2003 is the 41st Anniversary year for 10-10. Contact with members containing a 41 in their membership number (such as 72041 69415 64154 41126 00417) would count toward this contest.

Each year the anniversary number changes, making a whole new group of people the focus of the contest and promoting use of the 10 meter band.

RULES

During the calendar year (Jan 1 through Dec 31) make legal 10-10 contacts (10-10#, Date, Call, Name, QTH) with members containing the anniversary year in their membership number.

Contacts must be made on the 10 meter band with any mode (AM SSB FM PSK CW, etc) but must be made direct and unassisted. As example, no repeater, satellite or internet assisted contacts are permitted. The mode is also to be listed in the log.

Logs must contain only one entry for each 10-10 number. Contacts must be listed in 10-10 number order, with the 10-10#, DATE, CALL, NAME, QTH and MODE listed as shown in this example (log is example only - numbers do NOT match with calls):

10-10#	DATE	CALL	NAME	QTH	MODE
00417	0120	WA2XXX	HARRY	NY	SSB
01417	0202	K7XXX	GWEN	OR	SSB
08941	0813	KJ6XX	JAN	CA	PSK
14187	0902	VX2XXX	STEVE	QC	CW
18417	0202	SP8XXX	DON	POLAND	SSB
26410	1204	VK3XXX	MARY	AUSTRALIA	CW
41678	1104	W0HXX	BILL	KS	PSK
50417	0210	VE7XXX	JOHN	BC	AM

To enter a log you must be a member in good standing (dues paid) on December 31st of the contest year.

Mailed logs MUST be postmarked no later than January 15th of the following year, regardless of what day January 15th falls on.

Logs sent via the internet MUST be sent in ASCII (text) format no later than 2359 utc January 15th of the following year.

Certificates will be issued to the Top Ten and all entries will be posted in the April edition of the Ten-Ten News and forwarded to the web site manager for inclusion there.

Send logs to:

10-10 Anniversary QSO Party c/o
Steve Rasmussen N0WY
312 N 6th Street
Plattsmouth NE 68048-1302

Or via e-mail to <tententest@alltel.net>

New Life Members

01203.....	K1VHF	Morton H Krantz
05419.....	K0CSD	David L Copley
06492.....	WA6LYE	Mervin E de Haas
08560.....	K2GAT	Myron J Kaufman
14951.....	WA7BTZ	David P Carson
19912.....	W4KBZ	Frank J Blaylock
20923.....	W4LZP	William O Rogers
29299.....	K9PYE	William C Pye
30848.....	K7FIB.....	Richard I Ellis
31649.....	W6YD	George A Allan
32663.....	N6QD	John P Harton
37215.....	WJ5O	William H Hays
37582.....	N2EGO	Charles T Stupia
40209.....	VE3KDN	Ralph M Buzza
47692.....	N7INP.....	Alvin A Trumble
50356.....	KM5FF	Eddie L Bryant
50509.....	K3BP	Benjamin F Poinsett
58517.....	W1QU.....	Thomas Donohue
60099.....	WA5QCP	Richard L Kennedy
62002.....	KD6CYS.....	Claude H Gunnensen
62150.....	N5YLE	Bobby A Livingston
62703.....	N2PAT	Richard T Siefert
68190.....	N2PIG.....	Alexander J Dutkewych
68857.....	K6BIR	Vincent J Walton
69769.....	W4ZYD.....	Michael A Steele
70090.....	NP2DJ	Deborah M Thomas
70675.....	WB6OJB	Arnold J Kalan
70998.....	W5GEJ.....	George E Jones
71837.....	K2PIG	Debra Dutkewych
72759.....	KA1KOJ	Kevin J Gilot

WAS MANAGER SELECTED

The Operations Committee and Board of Ten Ten International are pleased to announce the appointment of Eva M. Donaldson, WB0CON, 53964 as the new Worked All States Award Manager.

Eva, an Extra class Amateur, is a Life member of Ten-Ten and an active member of the Denver area Chapters. Her E mail address is wb0con@attbi.com.

Eva's address and other information will be published in the next issue of the TEN-TEN NEWS. Please give Eva time to make the transition and get her feet on the ground before deluging her with applications.

There were a large number of applicants for the job. To all who applied, a hearty THANK YOU from the Committee and Board. These bios will be kept for future reference for future openings.

An award Manager for the Mobile Award was not chosen as that award is presently "under construction".

Thank you and help us welcome Eva in her new role as WAS Manager.

Ed Redwine K5ERJ / Brad Kimble K0DBK, Operations Comm.

W6OI #109 ON THE AIR

The 10-10 Club Station, W6OI #109, is available to any current (dues paid) 10-10 member or chapter for use as a special event station such as Field Day, Chapter gatherings, and Radio Conventions. Send a written application including dates and purpose of operation and any other information to:

JACK MOORE K5CC #50708
W6OI LICENSE TRUSTEE
371 RIDGE CREEK LN
BULVERDE TX 78163

Enclose a copy of your amateur license. QSL cards are available for special events. W6OI was operated during the 10-10 Sprint on October 10 and the Autumn CW contest on October 26-27.

Louise Chapman N6ELK #36654 operates W6OI each Wednesday as the 10-10 Net Control Operator beginning at 1800Z on 28.800 MHz. Please include a SASE when requesting a W6OI QSL card via:

LOUISE CHAPMAN N6ELK
310 CLARK AVE.
LONG BEACH CA 90808

Paperchasers working W6OI can request a copy of the W6OI chapter list from K5CC. For CW operators, W6OI has a FISTS number. W6OI is operated nightly at 0100Z on 3.768 MHz by Bob NZ5E #31049 on the Geratol Net. The Geratol Net is a worked all states net on the extra class portion of the 75 meter band.

the 10-10 News on CD-ROM

That's right! Every issue of the 10-10 News AND the Quarterly Bulletin that was ever published in magazine format (through 2001) is now available on a CD-ROM in Adobe pdf format (we have also included a copy of Acrobat for those that don't have Acrobat Reader) now available for the low price of \$20 USD which INCLUDES shipping and handling. You may pay by Check, Money Order or IRC's (\$1 USD per IRC). VISA and MasterCard are also acceptable. Please provide Card Number, Expiration Date, Name on Card, Phone Number and signature of Cardholder (please note that our credit card agent is RSVP of Omaha NE).

Mail to: 10-10 INTERNATIONAL NET, INC.,
 643 N 98TH ST #142,
 OMAHA, NE 68114-2342
 or by FAX to 402-891-2481

all sale profits go to the 10-10 Scholarship Foundation

10-10 Scholarship Foundation Supporters

The members listed below became 10-10 Scholarship Foundation Supporters during the months of September, October and November of 2002. We encourage all of our members to support the Foundation. The 10-10 Scholarship Foundation is a qualified 501(c)(3) tax exempt organization and therefore your contributions are tax deductible. If your employer will match your contribution, please let us know.

Gini Segedi, N7HDB reported that the attendees at the last Pahrump Gathering made a donation on behalf of the Foundation.

If you haven't donated before, we want you to know that all donations, no matter how small, are appreciated and they do add up.

K3ISS.....	00336	Robert Grau
W4KBZ.....	19912.....	Frank Blalock
AG9O.....	19990.....	John Czapowski
K6AWO.....	21291	William Dews
K1RB.....	23955.....	Robert Burns
WA6PAC.....	25645.....	Chester Rice
N7LV.....	26900	Robert Roller
WA7ONE.....	29018.....	Ronald McCombs
K4QDF.....	39463	James Hamilton
N7HDB.....	39650	Gini Segedi
KA0TAO.....	43493	Larry Ochs
W0RSD.....	44354.....	Norman Hanson
KA9PZQ.....	45525.....	Bernard Halpern
KA7ICF.....	46221	Jesse Larsen
KB6SWL.....	47126.....	Betty Hardy
KB6JES.....	53773	Alan Dietrich
WD5BTY.....	55881.....	Paul Christian
KC1XG.....	59107.....	John Lovering
KA8YNS.....	61015.....	James Keller
KD1RT.....	61696	Peter Doyle
N3NOP.....	63098.....	Robert Fulton, Jr.
N0TLA.....	63824	David Czaja
NE4TM.....	65110.....	Tommy Melton
NE4LR.....	65111	Lillie Melton
WA2ALM.....	65583.....	David Rothberg
KI7XQ.....	66826.....	John Hart
KC5AQU.....	67007	Joyce Ritter
KB3ASC.....	68139.....	Paul Schmeusser
N1KRC.....	68478.....	Paul McNulty
N1MR.....	68501	Mark Robinson
KJ7RF.....	69390	Doris May
AE4ZC.....	69792	Larry Berry
KB1DED.....	69968	Louis Herman
KG4DOE.....	71842	Robert Bush
W6HST.....	71857	Wilbert Harris
KE6BTM.....	71929.....	Charles Funsch
W6JDG.....	71980	John Gross
K4KXO.....	72071	Kenneth Ferguson

N6KZB.....	72794	Michael Burton
W0AFQ.....	72903	Lester Anderson, Jr.
KD4POJ.....	72963.....	Dwayne Lipscomb, Sr.
NF7Y.....	72972	Scott Clausen

You too can become a 10-10 Scholarship Foundation Supporter, by making your check payable to the 10-10 Scholarship Foundation. Please send to:

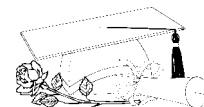
10-10 International Net Scholarship Manager

Larry Berger WA2SUH

9 Nancy Boulevard

Merrick, NY 11566-3119

10-10 SCHOLARSHIP APPLICANT INFORMATION



Each year the 10-10 International Net, through our non-profit corporation, the 10-10 Scholarship Foundation, funds five \$1,000 scholarships, which are administered on its behalf by the Foundation for Amateur Radio (FAR).

Hugh A. Turnbull W3ABC, Chairman of FAR's Scholarship Committee, announced the five most recent winners of the 10-10 Scholarships in the October 2002 10-10 International News. Over the past 14 years, 10-10 has funded 46 scholarships valued at \$41,000.

Applicants must be licensed Radio Amateurs having HF privileges. There is no restriction on the course of study, but applicants must intend to seek at least an Associate degree from a college or university. Non-U.S. Amateurs and those seeking graduate degrees are also eligible. Foreign members should be aware that students who study outside the United States are also eligible to receive a 10-10 Scholarship.

It is suggested that every 10-10 member encourage qualified college-bound radio amateurs to take advantage of this opportunity by requesting an application package by letter or QSL card prior to April 30, 2003 from the:

Foundation for Amateur Radio
P.O. Box 831
Riverdale, MD 20738

Applicants, except those who are active 10-10 members, must provide an endorsement from a current active 10-10 member (one whose dues are current).

Completed applications must be received by FAR prior to June 1, 2003.

10-10 AWARD INFORMATION

THIS IS A BASIC REVIEW OF AWARDS AVAILABLE FROM 10-10 <> PLEASE REQUEST RULES FOR COMPLETE INFORMATION

To apply for any 10-10 Award, proof of paid-up membership is mandatory. A copy of your membership card or address label from the latest copy of the *10-10 International News* must be sent with your application.

An application listing the rules for each award is available from the appropriate Award Manager listed below. Please send your request with a #10 (business size) envelope, self-addressed and stamped with one unit of first class postage, to the Award Manager for the Award you are interested in obtaining. Please no phone calls to Award Managers for an application or list of rules.

Rules for all Awards are also available on the 10-10 web site located at <http://www.ten-ten.org>

BAR AWARDS

A 10-10 Bar represents a legal contact with one hundred (100) 10-10 members. A Bar award may be applied for and awarded for each group of 100 10-10 members that you work. Additional certificates are available for the Bar levels of 1000, 2500, 5000, 7500, 10,000 and every 2500 contacts above.

INTERNATIONAL 500 OF THE WORLD (VP)

When you attain the 500 Bar from the 100-900 bar manager, you automatically become a member of the International 500 Club and will be assigned an honorary VP number to be used in conjunction with your 10-10 number. With the issuance of the number you are eligible to participate in the VP award program. The VP award recognizes those 10-10 members that work other members with VP numbers. A 10-10 member may apply for VP award endorsements when completing 100 contacts with VP members. A VP award may be applied for and

awarded for each group of 100 that you work. Also available to VP members are the VP Worked All States award and the Lucky 13 Certificate. The Lucky 13 award is intended to demonstrate the operator's ability to work the entire 10-meter band. The 10-meter amateur band extends from 28.0 to 29.7 MHz. The Lucky 13 award is awarded for completing a legal 10-10 contact with 13 different VP's on 13 different days on 13 different 100 kHz (plus or minus 10 kHz) segments of the band. These contacts must occur between 28.3 MHz and 29.7 MHz. There are 15 possible 100 kHz segments possible within this band section. For purposes of the Lucky 13 award, mobile, portable, or fixed operation may be used. Contacts can be made using any legal mode of operation. QSL conformation is not required.

WORKED ALL CONTINENTS AWARD

The 10-10 Worked All Continents award is issued for successfully working a 10-10 member in each of the six (6) radio continents (Africa, Asia, Europe, North America, Oceania, and South America)

COUNTIES AWARD

10-10 offers an award for working all 3077 U.S. Counties. The basic certificate is issued for the first 100 counties contacted. Endorsement seals are available for each 500 level. A plaque is awarded for working all 3077 10-10 Counties.

COUNTRIES AWARD

The Countries award certificate is awarded for confirmed contacts with 10-10 members in other countries. Applications require confirmations in the form of QSL cards (or non-returnable photocopies). A legal 10-10 contact within the applicant's country may be counted as one contact for this award. A basic

10-10 Countries certificate is awarded for contact with 25 countries. Thereafter, endorsement seals may be applied for in groups of 10 through the 75-country level. Beyond the 75-country level, endorsement seals are awarded in groups of five (5)

CW AWARD

The basic certificate for this award is earned with a minimum of 25 legal contracts with other 10-10 members

MOBILE AWARD

The basic Mobile Contact award is issued for 25 mobile contacts. Each contact must consist of the 10-10 number, call sign, name, QTH (state or country) of both parties and the date. Endorsement seals are available for the 50, 75, and 100 contact levels.

OM/XYL AWARD

Within 10-10's membership there are many husband and wife teams. These are referred to as OM/XYL teams. 10-10 offers the OM/XYL award for contact with as many of these teams as an operator can find. The basic OM/XYL Award is for contact with ten (10) teams.

WORKED ALL STATES AWARD

Make a contact with another 10-10 member in each of the 50 United States and you are eligible for the 10-10 WAS award. QSL Confirmation is required.

WPX (PREFIX) AWARD

The basic certificate is awarded for working 100 different prefixes

GREAT BRITAIN COUNTIES & REGIONS CERTIFICATE

A basic certificate is awarded for completion of a legal 10-meter contact with another 10-10 station in five (5) of the numbered Counties/Regions/Unitary Authorities of Great Britain.

AWARD MANAGERS

Bar Applications 100-900

Dan Morris, KZ3T # 41015 112 Royal Oak Ct., Lenoir, NC 28645. (828) 728-5049. kz3t@charter.net

Bar Applications 1000+

Cliff Taylor, K5FBS #48461 22707 Red Mountain Dr., Elmendorf, TX 78112-6034 (210) 621-2741 catk5fbs@aol.com

VP Bar Award Manager

Carl Fisher, W0HIK #40678. 5 Angelina Dr., Augusta, KS 67010-2262 (316) 775-5900 w0hik@aol.com

VP Worked All States Manager

Carl Fisher, W0HIK #40678. 5 Angelina Dr., Augusta, KS 67010-2262 (316) 775-5900 w0hik@aol.com

VP Lucky 13 Certificate Manager

Dan Morris, KZ3T # 41015. 112 Royal Oak Ct., Lenoir, NC 28645. (828) 728-5049. kz3t@charter.net

Continents Award Manager

Dick Corlew, NC6V #25057 3213 Carolyn Circle, Oceanside, CA 92054 (760) 757-9284. nc6v@cox.net

Counties Award Manager

Hank Richroath, K5HWI #63313 1004 S. Howeth St., Gainesville, TX 76240-5904. (940) 612-1111. k5hwi@velose.com

Countries Award Manager

Mike Davidson, N5MT #24949. 3518 Bellefontaine St., Houston, TX 77025-1310. (713) 668-6408. N5MT@aol.com

CW Award Manager

Lee Zalaznik, K16OY #50948 334 Olivina Ave., Livermore, CA 94551-6137. (925) 455-0361 lzlnk@ix.netcom.com

Mobile Award Manager (Temporary)

Ed Redwine, K5ERJ #11843 9 Yellowrose Lane, Augusta, KS 67010-2230 (316) 775-5700 k5erj@aol.com

OM/XYL Award Manager

Pat Hibbs, KH6OE #28842 4603 Glenna Way, Louisville, KY 40219-2814 (502) 968-1894 kh6oe@insightbb.com

Worked All States Award Manager

Eva Donaldson, WBØCON #53964. 12933 W Montana Drive, Lakewood, CO 80228-4244. (303) 989-0475. wb0con@attbi.com

WPX (Prefix) Award Manager

Al Longo, NN1J #41728 PO Box 94, Springfield, ME 04487-0094. (207) 738-3268 nn1j@arrl.net

Great Britain Counties & Regions Certificate Manager

Mike Crawshaw, G4BLH #18446 50 Kibble Grove, Brierfield, Nelson, Lancs, England BB9 5EW Tel 01144 1282 613754 ... g4blh@zen.co.uk

10-10 AWARDS

TOP TEN HONOR ROLL

Award Manager:
Cliff Taylor
K5FBS #48461

#	CNTCTS	CALL	10-10#
01	24600	WA5JDU	03017
02	20900	WB1DBZ	26001
SK	19400	W0RWC	00581
03	17000	PJ2WG	27999
04	16700	W4WKQ	33299
05	16500	K5MRU	00218
06	14100	WB7NUU	17416
SK	11600	WA9LIC	01599
07	11500	K0PV	09902
08	11500	K5GAY	11825
SK	11400	N5CUQ	00040
09	10800	NS4M	41176
10	10600	W9IAI	35140

1000+ BAR AWARD

Award Manager:
Cliff Taylor
K5FBS #48461

CERT #	CALL	10-10#
1521	K6EHA	65801
1522	KA9MUI	68604
1523	N1DO	63993
1524	W3SE	53431

5000 BAR

CERT #	CALL	10-10#
89	WA5RNV	11731

500 BAR AWARD

Award Manager:
Dan Morris
KZ3T #41015

VP #	CALL	10-10#
3233	W2FCA	70021
3234	DL2IAN	72712
3235	WA7HYD	72769
3236	KE4IVU	70981
3237	W3PWG	01538
3238	K6ATT	71986

3239	WA3GNW	32118
3240	KD5GP	32217
3241	K7AZX	70527
3242	N1QMU	67146
3243	W4DEE	03749
3244	W2VTV	71275
3245	W3SE	53431
3246	KA5PVB	41415
3247	VE4WSC	50470
3248	AC7OY	73012

LUCKY 13 AWARD

Award Manager:
Dan Morris
KZ3T #41015

CERT #	CALL	10-10#
	- none issued -	

VP AWARD

Award Manager:
Carl Fisher
W0HIK #40678

CERT #	CALL	10-10#
035	K5FBS	48461
036	K5HWI	63313

VP WAS

CERT #	CALL	10-10#
523	WU6I	71405

VP200

CERT #	CALL	10-10#
294	N5UMH	60027
295	WV4ED	69904
296	KA3NMB	53417
297	KJ6DB	71092
298	N3TSV	68156

VP300

CERT #	CALL	10-10#
190	N1DO	63993
191	KA9MUI	68604

VP400

CERT #	CALL	10-10#
131	KJ7WK	67955
132	W5UFA	23660
133	W8HL	56609
134	WD4GEO	71574

VP800

CERT #	CALL	10-10#
027	W6YLJ	19636

VP900

CERT #	CALL	10-10#
023	DL8YBM	36109

VP1000

CERT #	CALL	10-10#
015	K7URK	23567

VP2000

CERT #	CALL	10-10#
002	KB0ON	29849

WORKED ALL STATES AWARD

Award Manager:
Eva Donaldson
WBØCON #53964

CERT #	CALL	10-10#
2444	N3FSC	46927
2445	AC6PX	65823
2446	N3TSV	68156

WORKED ALL CONTINENTS AWARD

Award Manager:
Dick Corlew
NC6V #25057

CERT #	CALL	10-10#
586	WA9MTP	35184
587	KA1YDH	59140
588	N9GEF	45542

CW AWARD

Award Manager:
Lee Zalaznik
KI6OY #50948

CW #	CALL	10-10#
071	N7VS	60964
072	KC7EQW	73580
073	KQ4PK	63201

BASIC - 25 CW CONTACTS

50 CW CONTACTS

CW #	CALL	10-10#
065	ZL2BLQ	37883
068	WB7RHT	73057
070	W2FCA	70021
071	N7VS	60964

75 CW CONTACTS

CW #	CALL	10-10#
068	WB7RHT	73057
070	W2FCA	70021

100 CW CONTACTS

CW #	CALL	10-10#
021	KI6OY	50948
046	WA0OTO	02808

200 CW CONTACTS

CW #	CALL	10-10#
017	N4ZCG	56067

WPX (PREFIX) AWARD

Award Manager:
Al Longo
NN1J #41728

CERT #	CALL	10-10#
325	KA1YDH	59140
326	W3SE	53431

CERT #	CALL	10-10#
186	KA1YDH	59140
187	NM5MD	72385
188	W3SE	53431

CERT #	CALL	10-10#
101	KM5EH	71103
102	W3SE	53431

CERT #	CALL	10-10#
056	W5UFA	23660

CERT #	CALL	10-10#
033	W6YLJ	19636

10-10 AWARDS

COUNTY HUNTER AWARD

Award Manager:
Hank Richroath
K5HWI #63313

100 COUNTIES

CERT #	CALL	10-10#
487	WB4AWM	69661
488	KC7OC	67668

400 COUNTIES

CERT #	CALL	10-10#
147	KC8RRO	72780

500 COUNTIES

CERT #	CALL	10-10#
124	WA6CDO	72240

600 COUNTIES

CERT #	CALL	10-10#
090	W6YLJ	19636

700 COUNTIES

CERT #	CALL	10-10#
067	W6YLJ	19636

800 COUNTIES

CERT #	CALL	10-10#
049	W6YLJ	19636
050	AA1NC	67174

1000 COUNTIES

CERT #	CALL	10-10#
024	KB5UNX	64337

1300 COUNTIES

CERT #	CALL	10-10#
010	DL8YBM	36109

DX COUNTRIES AWARD

Award Manager:
Mike Davidson
N5MT #24949

BASIC AWARD 25 COUNTRIES

CERT #	CALL	10-10#
586	KD5EJG	49076
587	WB4AWM	69661
588	VE2LHP	71013
589	WA5RNV	11731

35 COUNTRIES

CERT #	CALL	10-10#
332	WB4AWM	69661
333	VE4ALN	69217
334	WA5RNV	11731

45 COUNTRIES

CERT #	CALL	10-10#
231	N0TW	36547
232	W2FCA	70021
233	WA5RNV	11731

65 COUNTRIES

CERT #	CALL	10-10#
121	KC7OC	67668

75 COUNTRIES

CERT #	CALL	10-10#
087	K5HWI	63313

80 COUNTRIES

CERT #	CALL	10-10#
066	PY2DBU	08264

OM/XYL AWARD

Award Manager:
Pat Hibbs
KH6OE #28842

BASIC - 10 TEAMS

CERT #	CALL	10-10#
454	KG6BOV	69136
455	KH6OE	28842
456	WD0SFT	37933

25 TEAMS

CERT #	CALL	10-10#
367	VA7TEN	24752
428	VE4ALN	69217
456	WD0SFT	37933

50 TEAMS

CERT #	CALL	10-10#
423	N0WY	68684
456	WD0SFT	37933

75 TEAMS

CERT #	CALL	10-10#
456	WD0SFT	37933

100 TEAMS

CERT #	CALL	10-10#
453	N7HDB	39650
456	WD0SFT	37933

125 TEAMS

CERT #	CALL	10-10#
456	WD0SFT	37933

MOBILE AWARD

Award Manager:
(see page 23)

MOBILE WAS

CERT #	CALL	10-10#
- none issued -		

BASIC MOBILE AWARD

CERT #	CALL	10-10#
132	KB5UNX	64337
133	DH1PAL	69212
134	DF3TE	69610
135	KA4N	50786
136	W3SE	53431

50 MOBILES

CERT #	CALL	10-10#
	W6YLJ	19636
	K5ERJ	11843

75 MOBILES

CERT #	CALL	10-10#
	W6YLJ	19636
	K5ERJ	11843

100 MOBILES

CERT #	CALL	10-10#
	W6YLJ	19636

200 MOBILES

CERT #	CALL	10-10#
	VE4ALN	69217



GB COUNTIES & REGIONS CERTIFICATE

Award Manager:
Mike Crawshaw
G4BLH #18446

BASIC CERTIFICATE 5 COUNTIES/REGIONS

CERT #	CALL	10-10#
- none issued -		

PINS, PATCHES AND DECALS

1" PINS - \$3.50 each or two for \$6.00
3" PATCHES - \$3.50 each or two for \$6.00
3" DECALS - \$1.50 each
SPECIAL - one of each for \$7.00

All shipments post paid (DX add \$1.00). Please make your check or money order out to 10-10 International Net, Inc. and mail to:

LARRY BERGER, WA2SUH #00407
TEN-TEN SCHOLARSHIP FOUNDATION MANAGER
9 NANCY BLVD
MERRICK NY 11566-3119

sale profits go to the 10-10 Scholarship Foundation



10-10 NET GUIDE

ZDAY	ZSUM	ZWIN	CHAPTER	QTH	FREQ	ZDAY	ZSUM	ZWIN	CHAPTER	QTH	FREQ
DAILY	0300	0400	Chief Seattle	WA	28625	WED	0100	0200	Space Houston on Ten (SHOT)	TX	28488
M-TH	0300	0400	Chief Seattle	WA	28430	WED	0200	0300	1Ø Bar X	TX	28440
M-F	1130	1230	Elmer J Fudd Net	PA	28340	WED	0300	0400	Edmonton Area Ten-Tenners (EATT)	VE	28520
SUN 1st	1900	2000	Mississippi Lighthouse	MS	28480	WED	1330	1430	Electric City	FL	28845
SUN		0010	Twenty-Eight (1st)	VK	28360	WED		1700	Lake Geneva	F	28185 CW
SUN		0830	Twenty-Eight (2nd)	VK	28560	WED	1700	1800	Channel Islands	CA	28340
SUN		0800	Mont Ventoux	F	28725	WED	2100	2200	Outlaws on Ten/Bounty Hunters	TX	28644
SUN	0830	0930	Borinage	ON	28785	WED	2300	2359	Michigan Robins	MI	28493
SUN		1400	GB Ten/Laurel Mancunium	G	28860	WED	2300	2359	Old Dominion	VA	28470
SUN	1300	1400	Fort McHenry/Yodar Kritch	MD	28840	THU	0001	0100	Battle Road	MA	28390
SUN	1300	1400	Arlington	VA	29200	THU	0001	0100	Egyptian Radio Club	IL	28420
SUN	1330	1430	Possum Trot	NC	28345	THU	0001	0100	Cypress	FL	28465
SUN	(1)		Possum Trot	NC	28150 CW	THU	0100	0200	Cowtown	TX	28710
SUN		1530	Neanderthal Chapter	DL	28355	THU	(1)		Cowtown	TX	28460
SUN		1600	Springbok	TN	28425	THU	0100	0200	Channel Islands	CA	28340
SUN	1530	1630	Steel City	IL	28420	THU	0100	0200	Cradle of the Confederacy	AL	28350
SUN		1700	Lake Geneva	F	28416	THU	0100	0200	Gateway	MO	28650
SUN	1600	1700	Sky Blue Waters	MN	28715	THU	0100	0200	Milwaukee	WI	28365
SUN	1600	1700	Twin Cities	MN	28325	THU	0100	0200	MO-KAN Tenners	MO	28440
SUN	1630	1730	Possum Trot	NC	28345	THU	0230	0330	Windfarms	CA	28485
SUN	1700	1800	Portland 5ØØ	OR	28350	THU	1300	1400	GB Ten/Laurel Mancunium	G	28870
SUN	1830	1830	Crater Lake	OR	28350	THU	2200	2300	Branding Iron I & II	TX	28390
SUN	1830	1930	Twin Tiers/Chenango	NY	28805	THU	2200	2300	Channel Islands	CA	28345
SUN	(1)		Twin Tiers/Chenango	NY	28335	FRI	0001	0100	Crazy Eights	PA	28388.8
SUN	2030	2130	Air Capital	KS	28775	FRI	0001	0100	Delaware Valley	NJ	28360
SUN	2100	2200	Possum Trot	NC	28150 CW	FRI	0001	0100	Fort McHenry/Yodar Kritch	MD	28370
SUN	2200	2230	South Texas Lighthorse Brigade	TX	28345	FRI	0001	0100	MAINE-iacs	ME	28402.5
S/M	2300	0001	Chesapeake Bay	MD	28435	FRI	0001	0100	Pine State	ME	28373
S/M	2330	0030	Michiana	MI	28465	FRI	0200	0300	Appalachian Mountain	KY	28400
S/M	2330	0030	Minuteman	MA	28150 CW	FRI		1400	New Waterkant	DL	28860
MON		0100	Arizona Desert 1Ø-1Ø Net	AZ	28445	FRI	2130	2230	Down Under	ZL	28530
MON		0100	Cradle of Liberty	PA	28695	FRI	2200	2300	Samuel Clemens	FL	28333
MON		0130	Cradle of Liberty	PA	28425	SAT	0001	0100	Fort McHenry/Yodar Kritch	MD	28370
MON	0100	0200	Palmetto Chapter	SC	28450	SAT	0001	0100	MAINE-iacs	ME	28402.5
MON	0100	0200	Milwaukee	WI	28365	SAT	1330	1430	Trotters and Pacers	NJ	28755
MON	0130	0230	Bauxite	AR	28470	SAT	1430	1530	Red River Valley/Steamboat	LA	28585
MON	0200	0300	Sky Blue Waters	MN	28715	SAT	1400	1500	59/62	F	28780
MON		1400	Oceans of the World	FL	28475	SAT		1500	Borinage	ON	28392.5
MON	1400	1500	Major League Baseball	CA	28425	SAT 1st & 3rd	1500	1500	Cast Iron Tower	DL	28133 CW
MON		1700	Berlin Bears	DL	28810	SAT 2nd & 4th	1500	1500	Cast Iron Tower	DL	28333
MON		1700	Colorado Quartermaster	CO	28120 PSK	SAT		1500	MO-KAN Tenners	MO	28440
MON	2230	2200	Colorado Quartermaster	CO	28360	SAT	1430	1530	Red River Valley/Steamboat	LA	28855
MON		2300	Oceans of the World	FL	28475	SAT	1500	1600	Doll Chasers	TX	28433
MON		2359	Santa Fe Trail	IN	28695	SAT	1500	1600	Republic of Texas	TX	28460
MON	2230	2330	Electric City	FL	28450	SAT	1510	1610	Louisiana Pelican 1Ø-1Ø Net	LA	28450
MON	2300	2359	Trotters and Pacers	NJ	28755	SAT		1700	Lake Geneva	F	28416
TUE		0001	Gold City	GA	28425	SAT	1630	1730	Boomtown	TX	28402
TUE		0030	Sky Blue Waters	MN	28355	SAT	1630	1730	City of Roses	OR	28835
TUE		0030	Twin Cities	MN	28325	SAT		1730	Route-66	IL	28370
TUE	0130	0230	City of Lights	IL	28720	SAT		1730	Tango	LU	28650
TUE	0100	0200	City of Lights	IL	28280 CW	SAT	1700	1800	Lilac City	WA	28390
TUE	0100	0200	Colorado Centennial	CO	28340	SAT		1830	Crater Lake	OR	28760
TUE	0130	0230	Bauxite	AR	28470	SAT		1900	River City/Camellia Capital	CA	28317
TUE	0130	0230	City of Lights	IL	28720	SAT		2000	Restoration Project/Feline Friends	VE	28747
TUE		0300	Concho Valley Chapter	TX	28360	SAT		2200	Alii	HI	28730
TUE	0230	0330	Golden Bear	CA	28485	SAT		2330	City of Melbourne	VK	28355
TUE	0300	0400	Bay Area	CA	28475						
TUE	1500	1600	New Mexico Mud Ducks	NM	28835	MON-SAT	1800		1Ø-1Ø International (during propagation)		28800
TUE		2300	Peshtigo Fire	WI	28360	MON-SAT	1800		1Ø-1Ø International		28380
TUE	2200	2300	Trail Drivers	TX	28345						
TUE	2300	2359	Fort McHenry/Yodar Kritch	MD	28370						
TUE	2300	2359	Great Lakes	AZ	28480						
T/W	2330	0030	Republic of Texas	TX	28560						
WED		0001	Gold City Chapter	GA	28425						
WED		0030	Kansas Trails	MN	28385						
WED		0100	Whitehouse	DC	28475						
WED		0100	Cincinnati Area Ten-Tenners	OH	28800						
WED	0001	0100	Castle Craig	CT	28375						
WED		0100	Steel City	IL	28420						
WED	0030	0130	All American City	AL	28400						
WED	0030	0130	Minuteman	MA	28409						

(1) After Scheduled Net

(alt) Alternate Frequency

(*) New or change

All changes to the above time and/or frequency should be referred to Chapter Coordinator - K6RDK

The Net times of those chapters not affiliated with 1Ø-1Ø are given, but their accuracy cannot be assured as those do not report regularly to the Chapter Coordinator. If you desire accuracy of your Net please advise the Chapter Coordinator, K6RDK David P Smith, 1349 Vernon Terrace, San Mateo, CA 94402 or email: k6rdk@arrl.net.

CONTEST RULES AND CALENDAR

6.2 QSO Parties

10-10 QSO Parties are contests and awards are given for high scores in Call Areas, countries, etc., 10-10 likes to think of these contests as Parties. These Parties are held for fun and to meet 10-10 members around the world. There are a few basic rules that all participants must follow in order to make the Party fair for everyone and to make the scoring as straightforward as possible for the volunteer scorers. All QSO Party rules are listed below. 10-10 sponsors four (4) QSO Parties and one (1) 24-hour Sprint Party each year. A 10-10 CW QSO Party is held in the Spring and Fall and a 10-10 Phone QSO Party is held in the Winter and Summer each year. The 10-10 Day Sprint is held on October 10th (10/10) each year. All 10-10 QSO Parties are 48 hours long except for the Sprint Party, which is 24 hours in length.

6.2.1 Who Can Participate?

10-10 QSO Parties are open to all amateurs with operating privileges on the 10-meter band. 10-10 members may use any contacts made for 10-10 awards. Non 10-10 members may use contacts to qualify for 10-10 membership or may choose to just give their call to 10-10 members.

6.2.2 Entry Classifications

You may enter each QSO Party in ONE of the following categories: Individual, Club or QRP. The Individual category includes single station operators and can also include OM/XYL or families using one shared station with individual call signs and 10-10 numbers. The QRP category is for stations with output power of 5 watts for CW, 10 watts PEP for SSB or 10 watts for AM/FM. Stations operating in the Club category must be a legitimate 10-10 Club with a registered 10-10 number, a government issued call sign and a membership of at least 5 amateurs. All Club members operating the Club station during a Party must be paid members of 10-10. A list of all operators in this category must accompany the submitted logs. Multi-transmitters (2 or more transmitters operating simultaneously, sharing one call sign) are NOT accepted in any QSO Party.

6.2.3 Score Assignment

Under certain circumstances it may be possible to assign your QSO Party score to your local 10-10 chapter. Only a paid 10-10 member belonging to a particular chapter as a local member may make chapter assignments of scores. Local members are defined as those members that can work the chapter net via ground wave. If in doubt regarding your qualifications to assign your score to a 10-10 Chapter, either do not claim Chapter score assignment or contact the Contest Manager for confirmation. The 10-10 Sprint Day Party does NOT allow Chapter assignment of scores.

6.2.4 Logging Contacts

During a QSO Party or 10-10 Day Sprint, log your contacts with the following information: date/time in UTC, call sign, name, QTH (state or country), 10-10 number, and points claimed. A sample log sheet is included on the 10-10 web site to aid you in setting up a log. All logs must be in UTC. If you log by hand, the above format will work well. If you log by computer, you may need to add columns for the 10-10 number, etc. Both hand logs and computer logs are acceptable for all 10-10 QSO Parties and the 10-10 Day Sprint. QSO Party logs may be submitted for ONLY one (1) category. For example, a single log CAN NOT be submitted in both the QRP and Club categories. In 10-10 Parties individuals compete against individuals, QRP stations against QRP stations, and Clubs against Clubs. QSO Party and 10-10 Day Sprint logs are accepted from paid 10-10 members ONLY.

6.2.5 Call sign/10-10# Dupe Sheet

A Dupe Sheet is required for all QSO Party and 10-10 Day Sprint log submittals based upon the following criteria. A Dupe Sheet is required if more than 50 contacts are made. Either hand generated or computers Dupe Sheets are acceptable. All submitted Dupe information should be in an alphanumeric sequence. Duping may be accomplished by use of the 100 square grid method using either 10-10 Number or call sign information. Example Dupe Sheets are included on the 10-10 web site. Some Contesters keep the Dupe Sheet current as they work each station, others bring it up to date during lull periods, and still others fill it out after the contest is over. Use whichever way suits your method of operation, but a call sign or 10-10 number Dupe Sheet MUST be provided with your QSO Party or 10-10 Sprint Party submittal if over 50 contacts are claimed.

6.2.6 Cover Sheet

QSO Party logs must be submitted using a 10-10 Cover Sheet. 10-10 Cover Sheets are published on page 32 of each issue of the 10-10 International NEWS. A sample Cover Sheet is also included in this Brochure or you can find a Cover Sheet on the 10-10's web site. An approved Cover Sheet YOU MUST be used one of these approved Cover Sheets when submitting your QSO Party or 10-10 Sprint results. Whatever Cover Sheet is used, make sure it must be filled out completely - name, call sign, 10-10 number, current mailing address, date of contest entered, etc.

6.2.7 Contest Submittal

The contest submittal package for any 10-10 QSO Party (CW or Phone) as well as the 10-10 Day Sprint, must include all of the following four (4) items: 1. Cover Sheet with all blanks filled in 2. Proof of membership such as a copy of your 10-10 dues card or mailing label from your latest copy of the 10-10 NEWS showing that your 10-10 dues are current as of the date of the QSO Party entered 3. Log in UTC format; hand or computer generated is acceptable 4. Call sign dupe sheet completed (if over 50 contacts are claimed) using 10-10 numbers or using call signs. - all contest submittals must have a Call Sign or 10-10 Number Dupe Sheet if over 50 contacts made. No dupe sheet is required if less than 50 contacts.

6.2.8 Certificates

A certificate will be awarded to the top scorer in each country and each US call area for each CW and Phone QSO Party, and for the 10-10 Sprint event. A country is defined as one of those on the current ARRL DXCC countries list. Certificates will also be awarded to the Top 10 finishers in the world and to the first place finishers in the Club, QRP, and chapter categories. In the event of a tie, the tiebreaker will be based on the greatest number of contacts made. All final scores for CW and Phone QSO Parties, and for the 10-10 Sprint event, for both DX and US call areas, will be published in the 10-10 NEWS for each scoring category along with aggregate chapter scores.

6.2.9 Quiet Zone

During 10-10 QSO Parties, 10-10 members are requested to have the courtesy to observe a Quiet Zone between the frequencies of 28.490 and 28.510 MHz for non 10-10 Party uses. Remember that the 10-10 organization promotes courtesy on the 10-meter band. Please leave the above frequencies open for non 10-10 members to use.

6.2.10 QSO Party Rules

The following eleven (11) rules apply to ALL scheduled annual QSO CW and Phone Parties and the 10-10 Day Sprint Party sponsored by the 10-10 International Net.

1. Phone contest contacts MUST be made within the 10-meter phone band on SSB, AM or FM. CW contest contacts MUST be made within the 10-meter band on CW, RTTY or Digital modes such as PSK31.

2. Repeater or satellite contacts are NOT allowed.

3. All Exchanges MUST include call sign, name, state or country and 10-10 #

4. A station may be counted ONLY once as a contact.

5. All contacts MUST take place during the designated Party hours.

6. All logs MUST be kept in UTC time.

7. A call sign or 10-10 number Dupe Sheet IS REQUIRED of all participants that submit 51 or more contacts. (See explanation above - Dupe Sheet).

8. ONLY a paid member belonging may make chapter assignments of scores to that chapter as a local member (See explanation above). NOTE: Chapter assignment of scores IS NOT allowed for the 10-10 Day Sprint.

9. Scoring: Points are earned for contacts with operators that include a valid 10-10 number exchange and for contacts that do not include a 10-10 number exchange.

(a) Two (2) points are awarded per contact WITH a 10-10 member.

(b) One (1) point is awarded per contact WITHOUT a 10-10 number exchange.

10. Disqualification criteria: Submitting illegible, improper logs or failing to comply with these Rules or their intent WILL result in disqualification. Logging errors exceeding 10 percent (%) will result in disqualification.

11. NO logging information will be returned.

6.2.11 Log Postmark Deadline Date

Each 10-10 QSO Party and 10-10 Day Sprint has a log submission Postmark Deadline Date. This date is published in the 10-10 NEWS and on the 10-10's web site. Any logs received with a postmark after the stated Postmark Deadline will be rejected. It is very strongly recommended that all logs be submitted as soon as possible after the close of the Party. It is also suggested that DX stations send their logs via Air Mail to assure timely receipt. Logs are to be mailed to the announced scoring individual(s) and/or chapters. Scorer's names and addresses for each QSO Party and 10-10 Day Sprint are published in the 10-10 NEWS and on the 10-10's web site.

6.2.12 10-10's Worldwide Web Site

Current information about 10-10 and upcoming 10-10 QSO Parties is always available on the 10-10 web site. In addition to the latest QSO Party dates and general information, there is a copy of a Cover Sheet and a sample Dupe Sheet that may be used for submittal of your QSO or 10-10 Day Sprint Party logs. The address is: <http://www.ten-ten.org>.

6.2.13 Additional Information and Clarification

Any additional information or clarifications that you may need regarding the rules or other information about 10-10 QSO Parties or the 10-10 Day Sprint may be requested through 10-10's Contest Manager.

2003 CONTEST DATES

	CONTEST	POSTMARK
Winter Phone.....	Feb 1-2	Feb 17
Spring CW.....	May 3-4	May 19
Summer Phone.....	Aug 2-3	Aug 18
Sprint	Oct 10	Oct 27
Fall CW	Oct 25-26	Nov 10

send logs for the above contests to:

STEVE RASMUSSEN - NØWY

312 N 6TH STREET

PLATTSMOUTH, NE 68048-1302

CONTEST RESULTS

SPRINT

October 10, 2002

TOP TEN

CALL	Qs	PTS
KC7DH	530	938
N6OPR	509	923
N2EOC	402	741
WG7Y	400	723
KC0CMZ	412	700
K0DVY	383	690
KE9S	363	658
AH6RF	330	619
W6YLJ	324	597
KJ7WK	323	597

US CALL AREA W0

CALL	Qs	PTS
KC0CMZ	412	700
K0DVY	383	690
W0LPZ	104	194
N0WY	103	194
N0WM	78	150
KB0TFT	63	120
W0RTV	43	85
KA0EIC	39	77
K7EXO	39	75
N0CUN	36	69
KB0RQE	26	52
K0WEC	19	38
WB0QKN	15	30
KB0MZE	6	12

US CALL AREA W1

CALL	Qs	PTS
WW3K	168	316
AA1KS	113	212
N1YKH	101	192
N1API	81	155
W1SIX	58	116
N1DO	47	94
WA1EBJ	44	88
W1DLC	30	60
NX1Q	18	36
KA1KOJ	16	32

**US CALL AREA W2**

CALL	Qs	PTS
N2EOC	402	741
KC2GCL	266	484
KC2HZW	118	220
K2CVG	103	192
KA2SKO	34	67
N2LQQ	35	65
KB2MRI	31	62

US CALL AREA W3

CALL	Qs	PTS
K3TC	254	460
N3TGB	92	180
W3EHZ	57	113
WB3BMA	41	81
W3PWG	38	76
KA3NMB	38	76
N2TDT	35	62
KA3VDN	29	57
NA3H	25	45
N3FSC	23	43
KC3T	19	38
N3FNE	14	27
WB3ABH	11	22
WA3JXW	10	20

US CALL AREA W4

CALL	Qs	PTS
K4QHH	221	418
KC7OC	124	237
N2EGO	82	157
WH2AAT	78	146
WD4GEO	70	137
KC4RIY	63	120
KC4MAI	55	107
W4SKW	53	106
KQ4PK	52	102
AD4RX	51	102
WV4ED	49	98
K9EHP	48	95
KO4OL	43	83
K4HAV	38	76
N4GJ	37	70
KN4Y	40	65
WA4EEZ	29	57
W1FPF	27	53
WA4OSD	24	48
KB4BBC	26	47
K4RL	23	46
KF4GL	7	14

US CALL AREA W5

CALL	Qs	PTS
K5FBS	308	573
KM5IH	308	572
W5GVP	293	542
N5MT	280	515
K5BKT	191	351
KA5VVD	163	301
N5UMH	138	258
N5WYR	123	233
N5XJD	96	186
AK5Y	76	152
WA5LOC	56	108
K5HWI	51	101
WX5I	51	100
WA5OO	50	99
W5QVS	45	90
K5CC	45	90
KD5RFC	40	78
KD5HIP	39	78
WB4AWM	37	72
KM5FF	35	68
AB5NS	23	46
AA5XQ	20	40
WJ5O	20	40
AD5KM	16	32
W5EIJ	17	24
N2JAS	4	8

US CALL AREA W6

CALL	Qs	PTS
N6OPR	509	923
WA6CDO	294	548
KE6FQC	265	501
K6VMN	248	471
WB6NFO	232	427
KC6QXU	170	324
N6XD	99	187
WB6OJB	96	185
KF6JG	89	170
K6OYX	77	151
K6BIR	76	149
NC6V	69	137
KJ6DB	47	93
K6EHA	46	91
AE6FC	47	90
K6SLR	42	83
KA6GCP	40	80
KG6BOV	40	77
K6RDK	34	68
AC6PX	34	65
K6ZCL	7	14

US CALL AREA W7

CALL	Qs	PTS
KC7DH	530	938
WG7Y	400	723
W6YLJ	324	597
KJ7WK	323	597
KN7AZ	256	478
N7PJP	218	416
K7QXG	208	396
KA7CWS	195	362
N7HDB	150	291
KC7NY	130	249
K7WV	95	188
N7YU	88	172
AC7OY	76	152
N7YG	67	130
WA7HYD	64	127
KB7EQW	45	86
KD7AGL	36	71
W7ART	31	61
N7XB	29	58
K7BFA	26	52
N7NWC	26	52
NN7T	24	48
N7VS	20	40
WA6GSV	17	34
KD7RQN	13	26
W7MC	7	14

US CALL AREA W8

CALL	Qs	PTS
KC8RRO	141	266
W8PJY	84	158
KB8UUZ	67	127
W8KNO	49	96
W8AP	43	85
W8HL	39	78
N8KQ	39	74
KC8BYK	23	44

US CALL AREA W9

CALL	Qs	PTS
KE9S	363	658
KB0ON	147	291
WD9AQL	34	67
W9CEO	27	54
W9SFH	12	24
KA9OBZ	10	20

ARGENTINA

CALL	Qs	PTS
LU5HE	166	299

CONTEST RESULTS

AUSTRALIA			FALL CW			CANADA		
CALL	Qs	PTS	October 26-27, 2002			CALL	Qs	PTS
VK2FHN	32	64	TOP TEN			VE5BCS	29	51
VK6PP	15	30	Call	QSOs	Pts	VE5KM	9	18
BELARUS			W5AB	158	236	GERMANY		
CALL	Qs	PTS	W3SE	134	230	CALL	Qs	PTS
EW6OO	24	24	KN4Y	135	217	DL5MC	46	88
BRAZIL			AK5Y	119	214	DK7LA	22	42
CALL	Qs	PTS	K3TC	146	213	NEW ZEALAND		
PY2DBU	21	41	W4SKW	87	160	CALL	Qs	PTS
CANADA			KU4W	86	155	ZL1LE	5	10
CALL	Qs	PTS	AA1KS	78	146	SWITZERLAND		
VA7TEN	76	143	W8JSM	78	137	CALL	Qs	PTS
VE5KM	47	94	WB7RHT	70	134	HB9DOT	7	14
VA3QSL	25	49	US CALL AREA W0			US VIRGIN ISLANDS		
VE5BCS	13	26	CALL	Qs	PTS	CALL	Qs	PTS
VE3TUQ	11	22	WA0OTO	65	119	NP2DJ	12	24
GERMANY			W2GHM	62	109	QRP		
CALL	Qs	PTS	N0WY	55	100	CALL	Qs	PTS
DK3KD	21	33	KG0UA	30	59	AA3S	21	36
DJ6SE	5	9	N0WM	25	49	WA6VLS	10	20
DJ2YE	5	9	W0NX	20	40	CLUB		
HAWAII			US CALL AREA W1			CALL	Qs	PTS
CALL	Qs	PTS	CALL	Qs	PTS	W6OI	41	80
AH6RF	330	619	AA1KS	78	146	CHAPTERS		
WH6LU	208	393	W1DLC	73	132	Chapter	LOGs	Pts
KH6F	39	77	W1AMF	43	80	PossumTrot	13	972
KH6DRT	15	28	W1DMM	7	13	C.A.T.T.	3	242
JAPAN			US CALL AREA W2			Whitehouse	1	213
CALL	Qs	PTS	CALL	Qs	PTS	STxLtHsBrigade	1	131
JA5GPJ	12	21	W2VTV	64	97	SkyBlueWater	1	119
NEW ZEALAND			W2FCA	33	66	Windfarms	2	116
CALL	Qs	PTS	W2KRK	29	49	S.H.O.T.	2	115
ZL1AFU	71	139	W2DSX	19	36	CastIronTower	1	88
QRP			WB2LOS	17	32	ArizonaDesert	2	60
CALL	Qs	PTS	US CALL AREA W3			CityOfLights	2	51
N8DEU	176	316	CALL	Qs	PTS	Gateway	1	49
WA2PQE	39	76	K3TC	146	213	Trotters&Pacers	1	49
AD5IF	23	45	W3EHZ	51	96	Bauxite	1	47
W1AMF	16	32	N3FSC	41	75	NewWaterkant	1	42
K1EQA	12	24	WA3YLO	25	47	SteelCity	1	28
CLUB			WB3ABH	14	28	CityOfRoses	1	20
CALL	Qs	PTS	WA3JXW	6	12	GoldenBear	1	20
WD0SFT	147	291	US CALL AREA W4			CastleCraig	1	13
W6OI	45	90	CALL	Qs	PTS	DownUnder	1	10
K3VOA	28	53	KN4Y	135	217	CHECK LOGS RECEIVED		
W1NRG	12	24	W4SKW	87	160	-SPRINT-		
			KU4W	86	155	K9JLS, KC5RPF, VE7HM		
			N4ERM	58	108	-FALL CW-		
			KR4OE	50	92	HP1AC		
			N4ZCG	60	90			
			KJ4RV	48	90			
			KQ4PK	43	70			
			US CALL AREA W5					
			CALL	Qs	PTS			
			W5AB	158	236			
			AK5Y	119	214			
			WA5RNV	71	131			
			N5XZ	59	105			
			NX5T	58	95			
			K5FBS	47	85			
			K5CC	41	80			
			W5EIJ	34	65			
			AA5XQ	27	47			
			KD5HIP	14	26			
			W5UFA	6	10			
			US CALL AREA W6					
			CALL	Qs	PTS			
			W3SE	134	230			
			WB7RHT	70	134			
			KI6OY	42	82			
			AE6IS	41	63			
			W6SJ	33	59			
			K6EHA	30	59			
			WA6BOB	28	55			
			WB6ETY	17	34			
			WB6CYP	9	15			
			US CALL AREA W7					
			CALL	Qs	PTS			
			K7YQI	20	40			
			K7WV	13	24			
			N7VS	11	20			
			W7MC	10	20			
			US CALL AREA W8					
			CALL	Qs	PTS			
			W8JSM	78	137			
			W8PJY	51	97			
			KJ8K	4	8			
			US CALL AREA W9					
			CALL	Qs	PTS			
			W9UW	18	35			
			WA9TWE	16	28			
			KB9YSI	14	28			
			W9AX	12	23			
			BELARUS					
			Call	QSOs	Pts			
			EW6OO	40	72			

10-10 INTERNATIONAL NEWS

MEMBERSHIP INFORMATION AND SERVICES

WOULD YOU LIKE TO JOIN 10-10?

Here is what you need:

1. You must hold a valid amateur operator license.
2. Your valid amateur operator license **MUST** authorize or qualify you for unsupervised transmitting operations in the ten meter amateur band under your own personal call sign.
3. You must make contact with ten members of 10-10 and submit a log listing all contacts, their 10-10 number, call sign, name, date of contact, and QTH (state/province/country). A new member application and contact log is available in Section 1 on page 31 of this publication.
4. You must remit dues for one or more years full membership. Fee schedule and payment information can be found in Section 2 on page 31 of this publication.

TYPES OF MEMBERSHIPS

Please see fee schedule in Section 2 on Page 31

Primary Membership

Primary membership is available with yearly dues, although there is a special incentive available when you pay for three years at once.

Family Membership

Family membership consists of a primary member and one or more family members who qualify as a 10-10 member (has made the necessary 10 contacts) and who reside at the same location and postal address. Family memberships run concurrently with that of the primary member. Add \$5 for each additional family member for each year. Only the primary member will receive a copy of the 10-10 News.

Life Membership

Life membership is available and may be paid in one lump sum or spread across two or three years. If you wish information on the extended payment plan, please contact the 10-10 Data Manager.

Senior Life Membership

Senior life membership is available to anyone who is currently 65 years of age or older. Extended payment plan is not offered with senior life membership.

Family Life Membership is no longer available

Membership Renewals

Fill out fee schedule and method of payment in Section 2 on Page 31 and forward as indicated to Data Manager or DX Area Manager. Please make sure you include a copy of your address label with form. If you do not have a copy of your address label (renewing after your membership has lapsed), please include a note with your name, current mailing address, call sign and 10-10 number.

DATA MANAGER SERVICES

Call/Name/Address Changes

All changes are to be sent to the 10-10 Data Manager. Please include your address label (or a copy) with necessary corrections.

10-10 Stamps

Self-adhesive 10-10 stamps that can be used on QSL cards, correspondence and envelopes are available for \$5 per 144 stamps.

10-10 Information Brochure

The 10-10 Information Brochure is 8 pages of everything you would want to know about 10-10. Available for \$2 postpaid along with a return address label.

10-10 Roster = Hard Copy - DISCONTINUED

The Roster is no longer available in printed form

XXIQ

XXIQ is a simple roster. It will search for a call if the 10-10 number is known or for a 10-10 number if the call is known. It is updated monthly and is available FREE at the 10-10 Web Site.

XXIP

XXIP is the expanded version of XXIQ, offering 10-10 number, call, name, address, city, state/country, membership status, expiration date, and SK status. XXIP will print a simple address label. XXIP is updated **monthly** and is available on a CD-ROM or by download from the LinGer web site. Order from the Data Manager: CD-ROM for \$10 US Zip Codes or \$13 DX postpaid. For download version e-mail the Data Manager <wa6poz@arrl.net> or go to <www.lingerinc.com> for instructions.

Data Manager, 10-10 International Net, Inc.

PMB142

643 N. 98th Street

Omaha, NE 68114-2342

Awards and Certificate Guide

This item has been discontinued from production.

Please read the Chapter Coordinator's Column in this issue for more information

Scholarship Donations

Donations to the 10-10 Scholarship Foundation are requested from each member on an annual basis to help fund the five \$1000 10-10 scholarships. Your check should be made payable to the 10-10 Scholarship Foundation and sent to:

Larry Berger, WA2SUH #00407

10-10 Scholarship Manager

9 Nancy Blvd.

Merrick, NY 11566-3119

Catch us on the WEB
http://www.ten-ten.org

10-10 INTERNATIONAL NEWS

SECTION 1 - MEMBERSHIP APPLICATION AND CONTACT LOG

NOTE: If this membership application is being used for renewal purposes, please enter your 10-10 number here _____

Please print your Name _____ Call _____

Address _____ Year of Birth _____

City _____ State or Country _____

Postal/Zip Code _____ E-mail Address _____

NOTE: 10-10 NUMBER, CALL, NAME, ADDRESS, MEMBERSHIP STATUS AND E-MAIL ADDRESS IS MADE AVAILABLE TO ALL MEMBERS VIA A MEMBERSHIP ROSTER. ALL OTHER INFORMATION IS KEPT CONFIDENTIAL AND NOT DISCLOSED EXCEPT BY THE ORDER OF A LAWFUL COURT.

I certify that I meet the membership requirements* of 10-10 _____

* as listed on Page 30 of this publication

YOUR SIGNATURE

	10-10 NUMBER	CALL SIGN	OPERATOR'S NAME	DATE OF CONTACT	QTH (State, Province or DX Country)
1					
2					
3					
4					
5					
6					
7					
8					
9					
10					

SECTION 2 - FEE SCHEDULE AND PAYMENT INFORMATION

10-10 FEE SCHEDULE (eff 2/1/03)	US Zip Codes	DX
New Members	<input type="checkbox"/> \$ 15	<input type="checkbox"/> \$ 18
Renewals (yearly)	<input type="checkbox"/> \$ 15	<input type="checkbox"/> \$ 18
Renewals - 3 year incentive	<input type="checkbox"/> \$ 40	<input type="checkbox"/> \$ 49
Family Membership (yearly)	<input type="checkbox"/> \$ 5	<input type="checkbox"/> \$ 5
Life Membership	<input type="checkbox"/> \$ 500	<input type="checkbox"/> \$ 650
Senior Life	<input type="checkbox"/> \$ 150	<input type="checkbox"/> \$ 200
Scholarship Foundation Donation	<input type="checkbox"/> \$ ____	<input type="checkbox"/> \$ ____
Enter Total		

US Postal Codes and LIFE Memberships mail to
Data Manager, Ten-Ten International Net, Inc.
PMB142
643 N. 98th Street
Omaha, NE 68114-2342 USA
for information email: wa6poz@arrl.net

DX Applicants mail to:
Carol Hugentober, WA8YL #29588
DX Area Manager
4441 Andreas Avenue
Cincinnati, OH 45211-2622 USA
for information email: wa8yl@juno.com

METHOD OF PAYMENT

☐ CHECK Make all checks payable to 10-10 International Net, Inc. Please list your call and 10-10# on your check.

Do not send cash. All DX are reminded that money amounts are quoted in US Dollars.

DX Members please pay by International Postal Money Orders (IRC's are acceptable).

☐ MASTERCARD Account Number (Please include all the numbers on your credit card) Please note that our credit card agent is RSVP of Omaha NE

☐ VISA

Good Through: /

Name of Cardholder _____ PHONE (required): _____

SIGNATURE of Cardholder _____ Date: _____

For charges this form may be faxed to 10-10 International Net, Inc. at 402-891-2481

10-10 QSO PARTY COVER SHEET

EVENT BOX

Please Check Event Box

WINTER PHONE.....☐

SPRING CW.....☐

SUMMER PHONE.....☐

FALL CW.....☐

10-10 SPRINT.....☐

SCORING BOX

CONTACT TYPE	NO. OF CONTACTS	MULTIPLY BY	POINTS
WITH 10-10 Number		x 2	
WITHOUT 10-10 Number		x 1	
TOTAL CONTACTS		TOTAL POINTS	

ENTRY BOX

Please Check Entry Type

INDIVIDUAL.....☐

CLUB.....☐

QRP.....☐

Chapter Assignment (if any)

(not valid for 10-10 Day Sprint)

US Call Area (W0-W9) or ARRL DX
Country you operated from

CHECK LIST

*You must have the following items enclosed in your
QSO Party envelope to be an acceptable log submittal.*

- ✓ **Proof of current Membership** - *Either a photocopy of your membership card or copy of the address label from the latest issue of the 10-10 News*
- ✓ **Log in UTC Date/Time**
- ✓ **Dupe Sheet(s)** *if your log contains more than 50 contacts*
- ✓ **Cover Sheet** - *Pertinent information in the Event and Entry boxes must be entered, and all blanks in the Scoring Box must be filled.*

**For rules, event dates and mailing information see
QSO Party Contest Rules and Calendar on page 26**

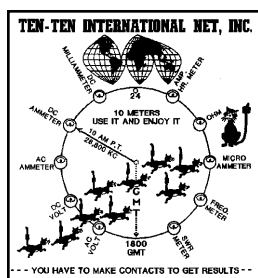
10-10 International Net, Inc.
PMB 142
643 N. 98th Street
Omaha, NE 68114-2342

Address Services Requested

TIME TO RENEW? EXPIRATION DATE
IS ON MAILING LABEL BELOW

FIRST CLASS

PRE-SORTED
FIRST-CLASS MAIL
U.S. POSTAGE
PAID
OMAHA, NE
PERMIT 1799



OCTOBER 2002
(FALL)